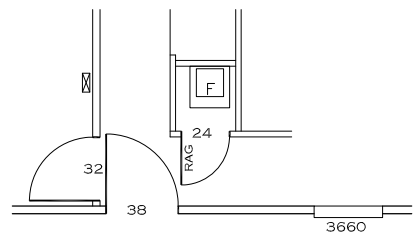
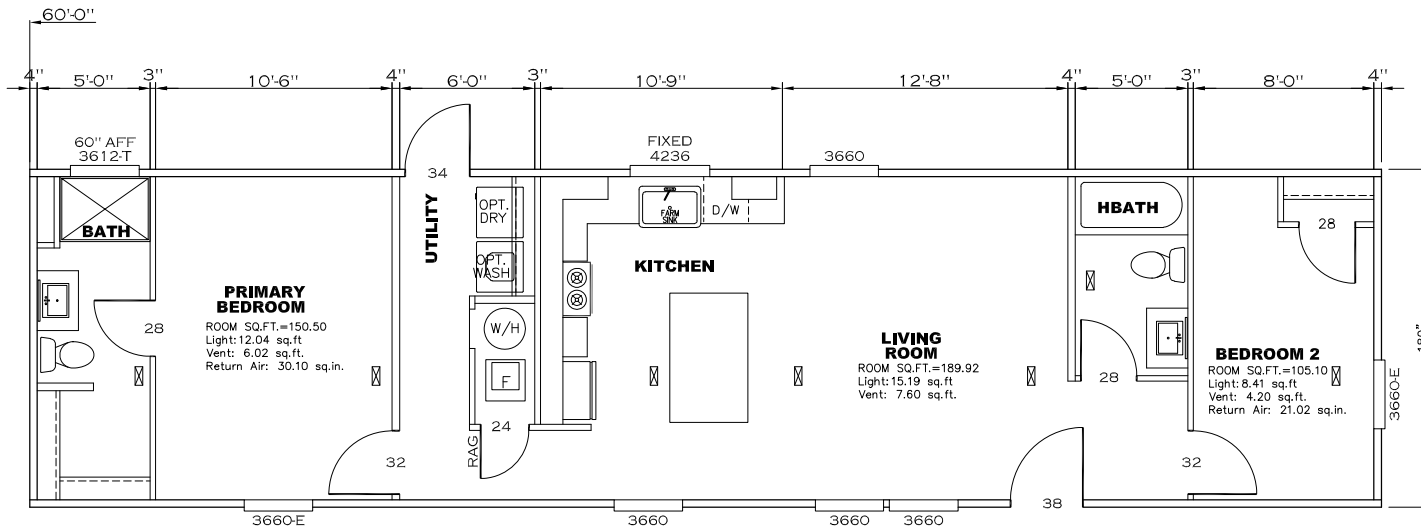


MODEL # NXT16602A
 DRAWING # 52S012
 16'x60' TRINITY



OPT. FRONT DOOR W/
IN PLACE OF REAR DOOR

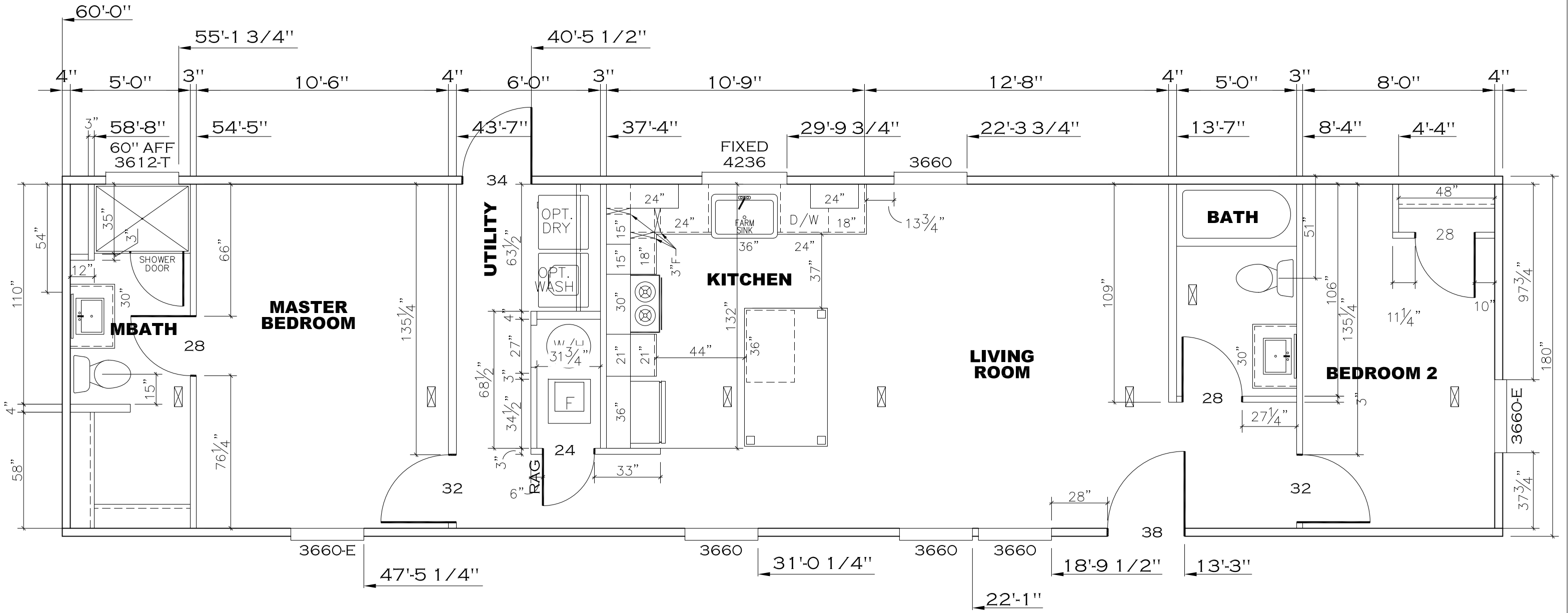
APPROVED **HWC** **APPROVED**

REVISED
19 APR 2021
FP-16-2942
Federal Manufactured
Home Construction
And Safety Standards

900 SQ.FT. (STD PLAN "CONDITIONED")		
N/A SQ.FT. (W/OPT. PORCH/RECESS "CONDITIONED")		
CMH MANUFACTURING	Model #: FPC16602A Date: 8/10/20 Scale: N.T.S.	Drawing #: 325012
Product Designer: BF	16' x 60' Trinity	

REV:-4/16/2021 4:37 PM

FLOOR PLAN



900 SQ.FT. (STD PLAN "CONDITIONED")
 N/A SQ.FT. (W/OPT. PORCH/RECESS "CONDITIONED")

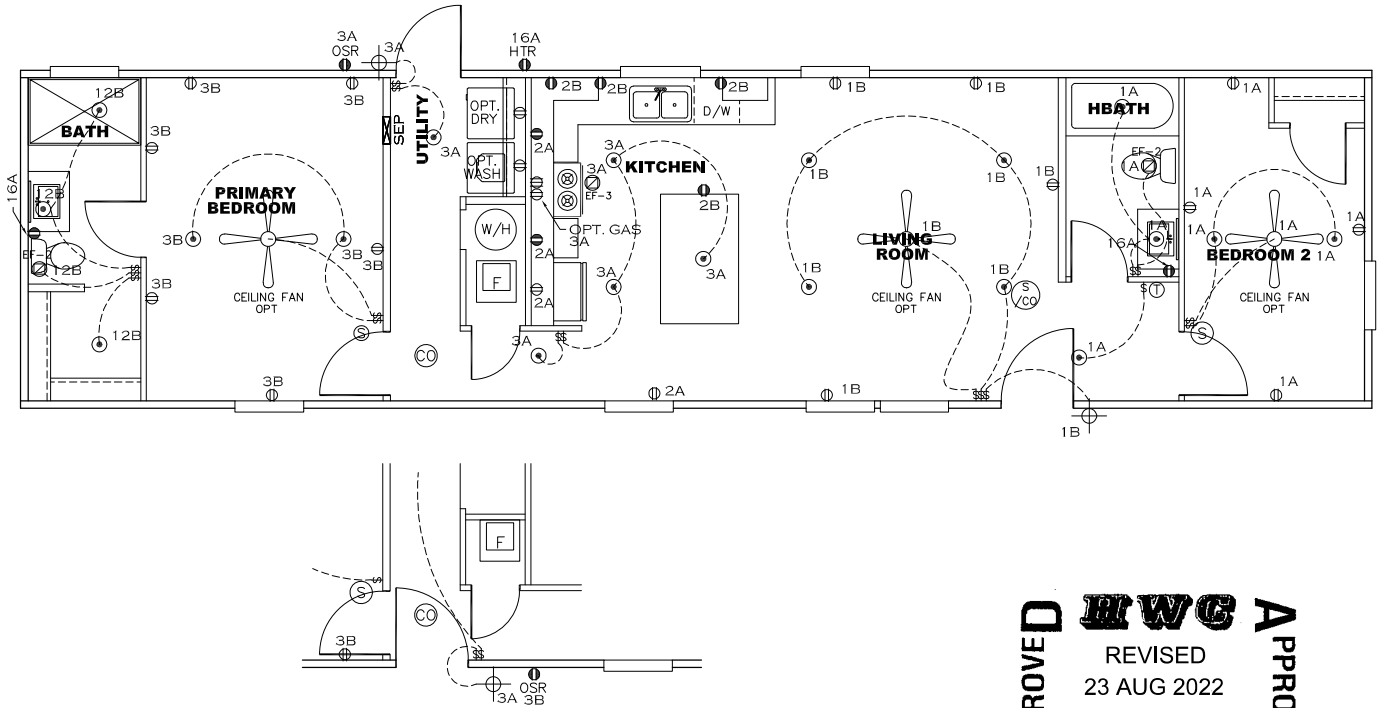
CMH MANUFACTURING	Model #: YE516602A	Drawing #:
	Date: 8.10.20	Scale: N.T.S. 525012
Product Designer: BF	16' x 60' Trinity	

REV: 10/7/2020 5:53 PM

FLOOR PLAN

NOTES:

1. ALL CIRCUITS SHOWN ARE FOR REFERENCE AND MAY BE CHANGED BASED ON OPTIONAL COMPONENTS INSTALLED IN THE HOME.
2. REFER TO DAPIA MANUAL FOR SYMBOL CHART.
3. EITHER LIGHT OR RECEPTACLE MUST CONNECT TO SWITCH.
4. EF-1= 50 CFM EXHAUST FAN REQUIRED FOR THERMAL ZONE III THERMAL ZONES I & II MAY USE FAN OR WINDOW W/1.5 SQ. FT. OPENABLE GLASS.
5. EF-2= 50 CFM EXHAUST FAN REQUIRED THERMAL ZONE I, II, AND III.
6. EF-3= 100 CFM RANGE EXHAUST FAN, SWITCH AT HOOD.
7. EF-4= WHOLE HOUSE VENTILATION REQUIREMENTS PER DAPIA MANUAL.
8. REFER TO DAPIA MANUAL OR THE MFG. INSTALLATION INSTRUCTIONS FOR PROPER WIRE SIZE AND BREAKER SIZE FOR SPECIFIC APPLIANCE AND MODEL BEING INSTALLED.
9. ALL SMOKE ALARMS TO BE LOCATED ON THE CEILING.
10. CARBON MONOXIDE ALARMS ARE ONLY REQUIRED WHEN HOME HAS EITHER FUEL BURNING APPLIANCES, IS GARAGE READY OR IS BASEMENT READY. REFERENCE DAPIA MANUAL FOR ADDITIONAL INFORMATION.
11. DIMENSIONS SHOWN ON PRINT ARE APPROXIMATE AND TO BE USED ONLY AS A GUIDELINE.



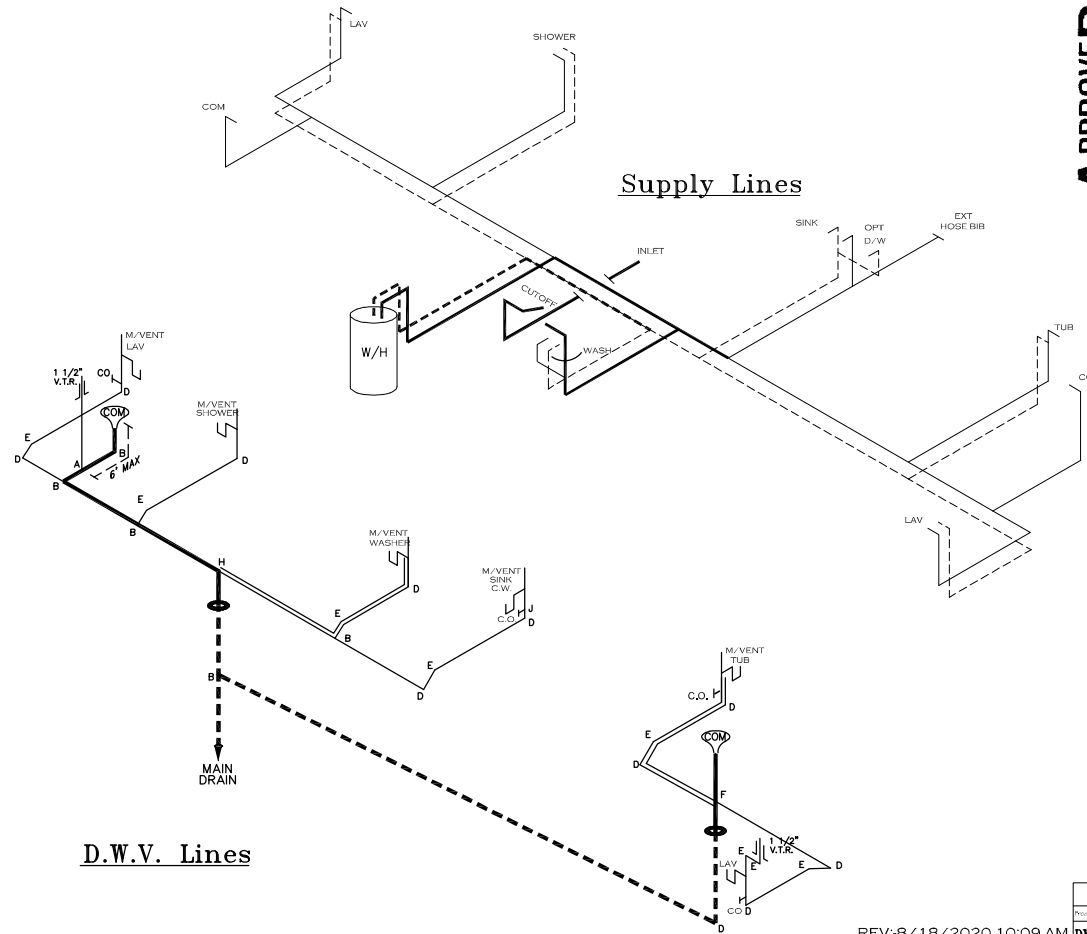
CIRCUIT	CIRCUIT #	WIRE	BREAKER	CIRCUIT	CIRCUIT #	WIRE	BREAKER	CIRCUIT	CIRCUIT #	WIRE	BREAKER
LIGHT/RECEP	1A,B,3A,3B,12B	14-2	15-SP	WATER HEATER	4A,6B	SEE NOTE #8		BATHROOM	16A	12-2	20-SP
KIT/DINING	2A,2B	12-2	20-SP	RANGE	5B,7A	SEE NOTE #8		OPT G/DISP	9B	SEE NOTE #8	
WASHER	12A	12-2	20-SP	FURNACE	6A,8A,B,10A,B	SEE NOTE #8		OPT SPA/WP/JAC	11A,B	SEE NOTE #8	
DRYER	5A,7B	SEE NOTE #8		OPT D/WASH	9A	SEE NOTE #8		MICROWAVE	N/A	SEE NOTE #8	
				SMOKE ALARM	4B	SEE NOTE #8					

APPROVED **HWG** **APPROVED**
 REVISED
 23 AUG 2022
 FP-16-2942
 Federal Manufactured
 Home Construction
 And Safety Standards

900 SQ.FT. (STD PLAN "CONDITIONED")		
N/A SQ.FT. (W/OPT. PORCH/RECESS "CONDITIONED")		
CMH MANUFACTURING	Model #: FFC16602A	Drawing #:
Product Designer: BP	Date: 6.10.20	Scale: N.T.S.
		525012
16' x 60' Trinity		

ELECTRICAL PLAN - 06

File Path:\VEN\G\Persub\FrenchB\952-Athens\YES Product Line\92s012.dwg, Last Saved By:FrenchB, Saved Date:8/18/2020 10:04 AM



APPROVED **IRWG** **APPROVED**
 AUG 18 2020
 FP-16-2942
 Federal Manufactured
 Home Construction
 And Safety Standards

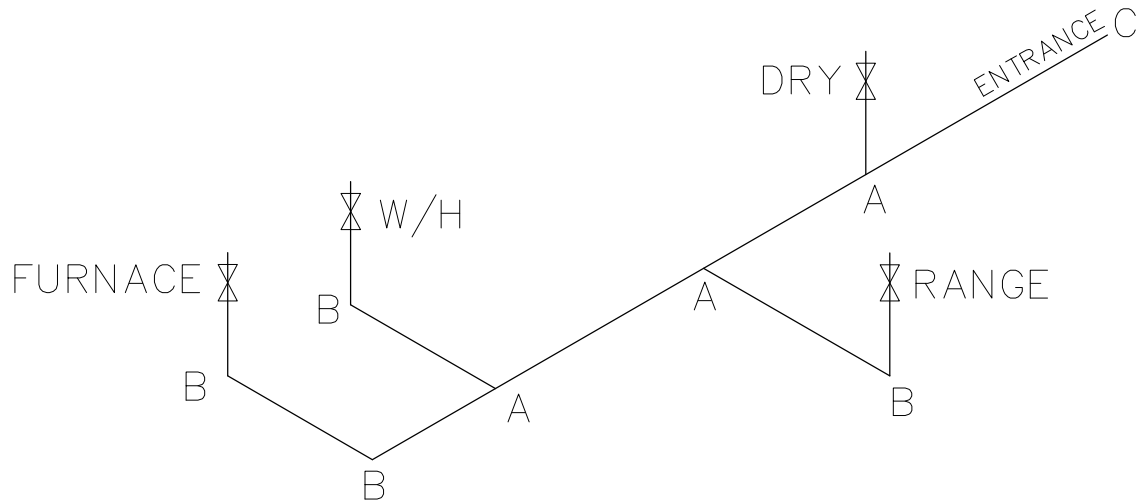
900 SQ.FT. (STD PLAN "CONDITIONED")	
N/A SQ.FT. (W/OPT. PORCH/RECESS "CONDITIONED")	
CMH	Model # YES 62074
Product Design: 87	Trace # 10.01 Scale: 1/8" = 1'-0" 5/25012
1/8" x 5/8" Trinity	

REV:8/18/2020 10:09 AM DWV & SUPPLY LINES

FILE PATH: \\P:\15\1501\1501\FRAME\1501\FRAME.DWG, LAST DERIVED BY: P1501, DERIVED DATE: 01/24/2020 2:52 PM

LEGEND		APPLIANCE BTU'S RATINGS MAX. INPUT	
SYM	FITTINGS		
A	TEE	FURNACE	65,000 BTU'S
B	90 ELL	W/H	37,000 BTU'S
X	VALVE	RANGE	52,000 BTU'S
C	CAP	DRYER	22,000 BTU'S

MDL=17'



APPROVED **HWG** **APPROVED**

AUG 18 2020
FP-16-2942

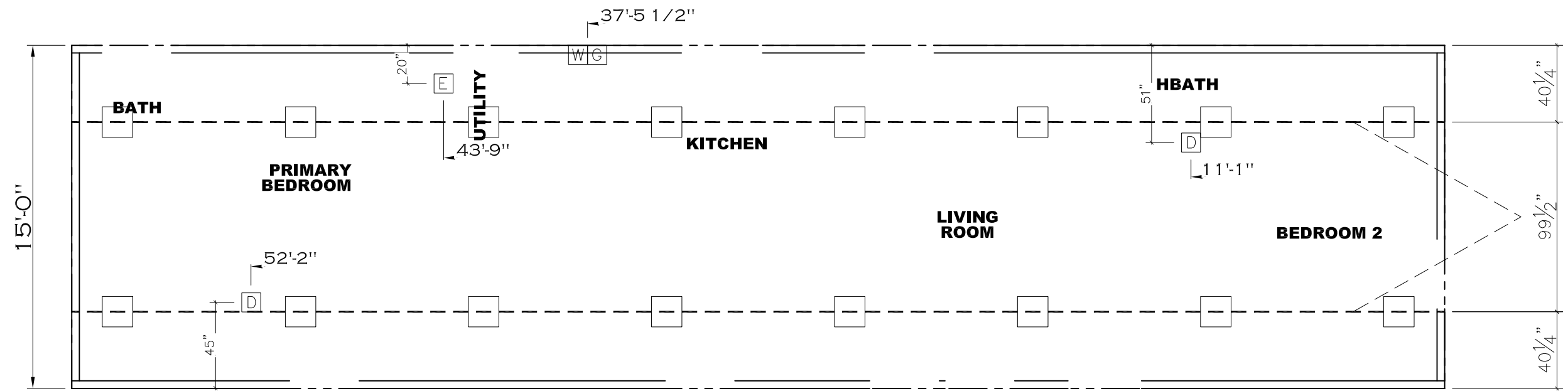
Federal Manufactured
Home Construction
And Safety Standards

GAS LINE SIZE CHART	
—	= 1"
—	= 3/4"

- NOTES:
- 1) ALL PIPE IS 3/4" I.D. CAST (EXCEPT WHERE NOTED OTHERWISE)
 - 2) MDL=MAX. DETERMINED LENGTH OF PIPE
 - 3) FITTING MAY BE ADDED OR SUBTRACTED TO TRAVERSE VARIATIONS IN AXLE QUANTITY, PLACEMENT, AND FRAME TYPE.
 - 4) INLET LOCATION MAY VARY TO STAY WITHIN MAX. DETERMINED LENGTH

REV:-8/15/2020 3:34 PM

900 SQ.FT. (STD PLAN "CONDITIONED")	
N/A SQ.FT. (W/OPT. PORCH/RECESS "CONDITIONED")	
GMH Manufacturing	Model #: VES1GG22A Drawing #: 525012
Date: 10/20 Scale: N.T.S.	
Product Designer: BF	16' x 60' Trinity
FRAME	



SERVICE DROP LEGEND	
E	= ELECTRICAL DROP
W	= WATER INLET
D	= DWV PLUMBING DROP
G	= GAS INLET

900 SQ.FT. (STD PLAN "CONDITIONED")
 N/A SQ.FT. (W/OPT. PORCH/RECESS "CONDITIONED")

CMH MANUFACTURING	Model #: YES16602A	Drawing #:
	Date: 8.10.20	Scale: N.T.S. 525012
Product Designer: BF	16' x 60' Trinity	

REV: 9/29/2022 11:47 AM SERVICE DROPS