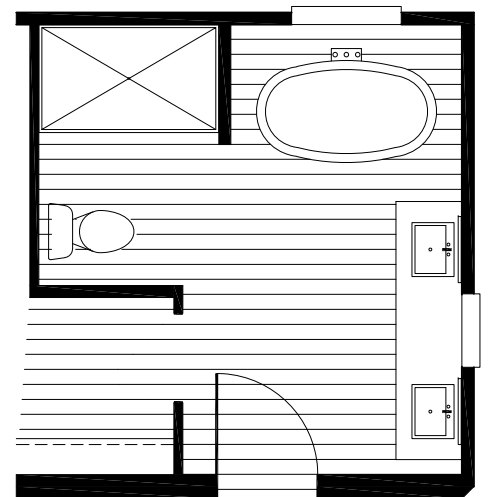
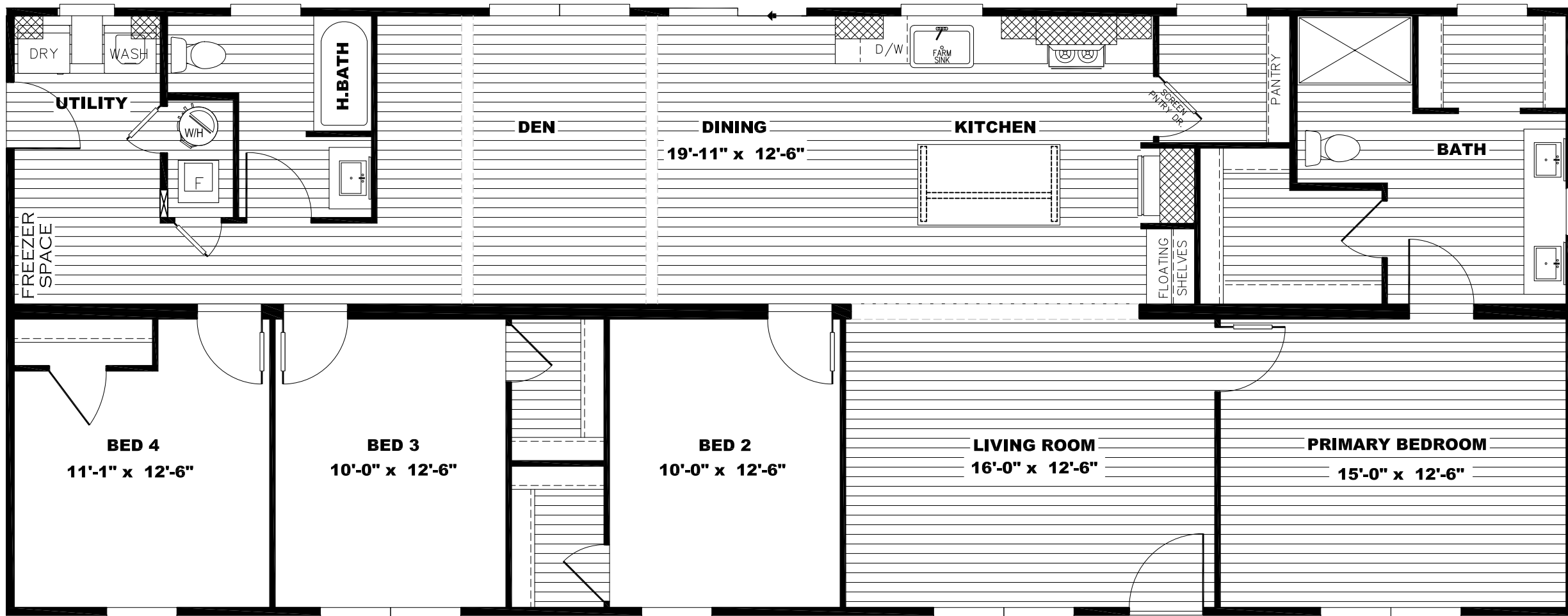
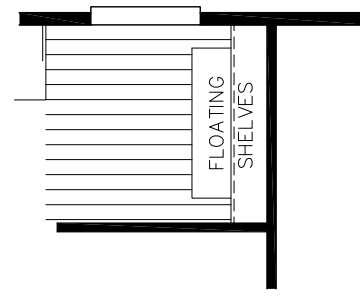
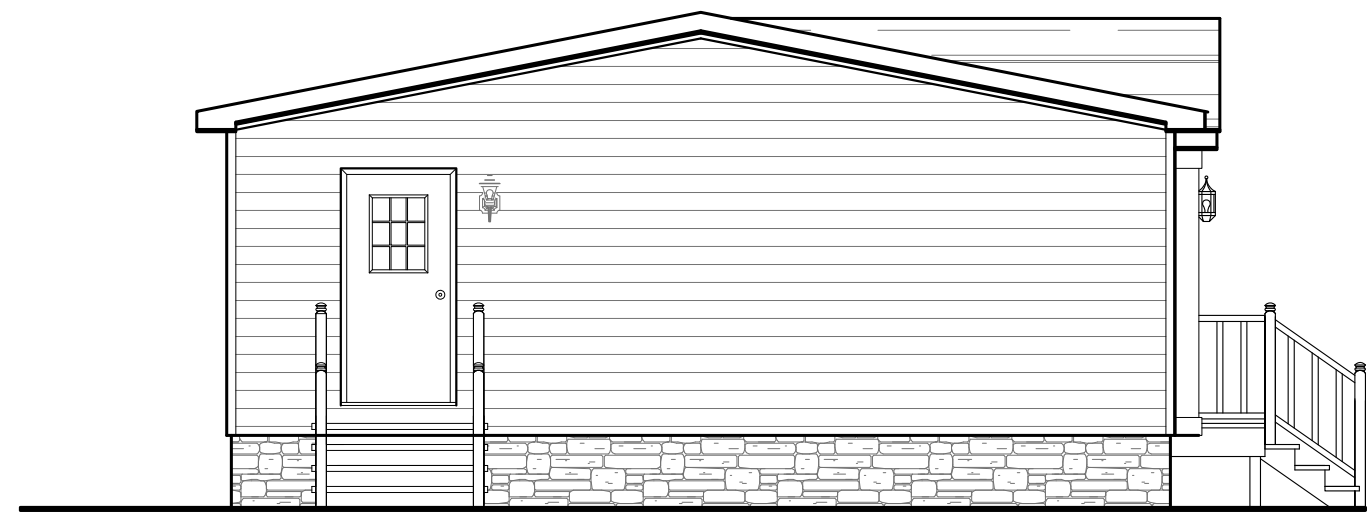


COFFEE BAR OPTION



MODEL #NXT28684C
DRAWING # 52M029
28' x 68' ANGELINA



LEFT SIDE ELEVATION



RIGHT SIDE ELEVATION

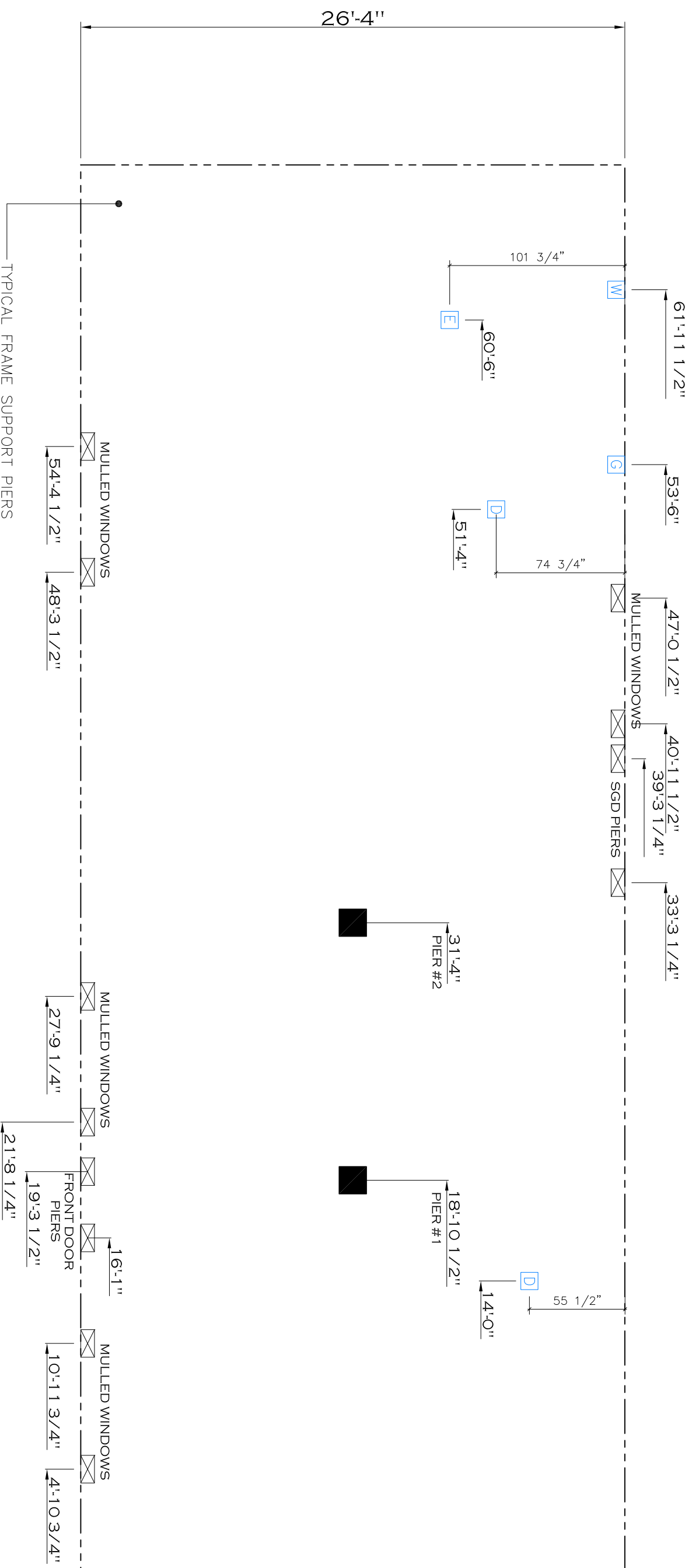
REV:-5/17/2023 8:18 AM

CMH MANUFACTURING		1,790 SQ.FT. (STD PLAN "CONDITIONED") N/A SQ.FT. (W/OPT. PORCH/RECESS "CONDITIONED")	
		Model #: NXT28604C	Drawing #:
Product Designer: FrenchB	Date: 5.1.23	Scale: N.T.S.	52M029
ELEVATION		28' x 68' ANGELINA	

20 psf Roof Live Load		
Column Pier #	Distance from Hitch	Pier Load (lbs)
1	18.875	2860
2	31.333	2860

30 psf Roof Live Load		
Column Pier #	Distance from Hitch	Pier Load (lbs)
1	18.875	4734
2	31.333	4734

40 psf Roof Live Load		
Column Pier #	Distance from Hitch	Pier Load (lbs)
1	18.875	5817
2	31.333	5817



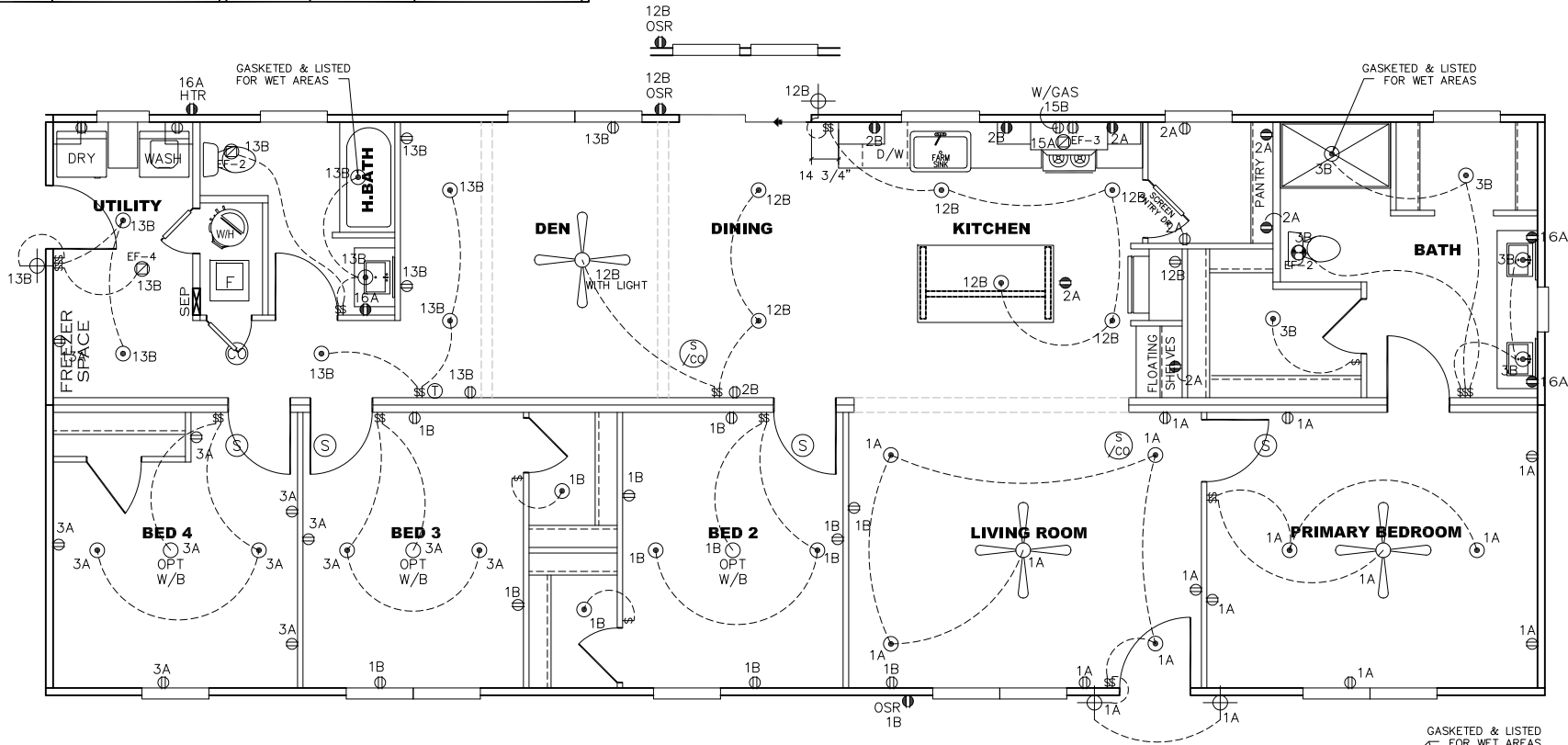
REV:6/8/2023 7:43 AM

1,790 SQ.FT. (STD PLAN "CONDITIONED")
N/A SQ.FT. (W/OPT. PORCH/RECESS "CONDITIONED")

CMH MANUFACTURING	Model #	NXT26G64C	Drawing #:	
	Dates	1.23	Scale	N.T.S.
Product Designer: FrenchB		28' x 68' ANGELINA		

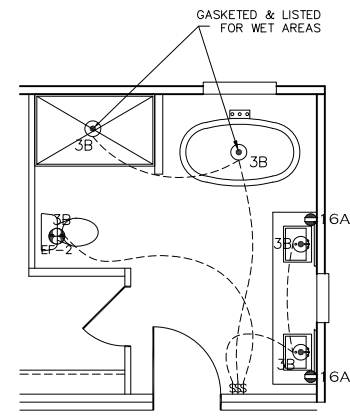
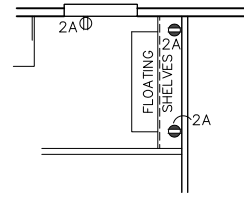
service drop

CIRCUIT	CIRCUIT #	WIRE	BREAKER	CIRCUIT	CIRCUIT #	WIRE	BREAKER	CIRCUIT	CIRCUIT #	WIRE	BREAKER
LIGHT/RECEP	1A,1B,3A,3B	14-2	15-SP	DRYER	5A,7B	SEE NOTE #8		BATHROOM	16A	12-2	20-SP
LIGHT/RECEP	12B,13B,14A,14B	14-2	15-SP	WATER HEATER	4A,6B	SEE NOTE #8		OPT C/DISP	9B	SEE NOTE #8	
KITCHEN	2A,2B	12-2	20-SP	RANGE	5B,7A	SEE NOTE #8		OPT SPA/WP/JAC	11A,B	SEE NOTE #8	
WASHER	12A	12-2	20-SP	FURNACE	6A,8A,B,10A,B	SEE NOTE #8		FREEZER	13A	SEE NOTE #8	
RANG HOOD/MICROWAVE	15A	SEE NOTE #8		OPT D/WASH	9A	SEE NOTE #8		OPT ELEC. FIREPLACE	16B	SEE NOTE #8	
OPT. GAS RANG	15B	SEE NOTE #8		SMOKE/CO DETCT	4B	SEE NOTE #8					
				REFER	12B	SEE NOTE #8					



NOTES:

1. ALL CIRCUITS SHOWN ARE FOR REFERENCE AND MAY BE CHANGED BASED ON OPTIONAL COMPONENTS INSTALLED IN THE HOME.
2. REFER TO DAPIA MANUAL FOR SYMBOL CHART.
3. EITHER LIGHT OR RECEPTACLE MUST CONNECT TO SWITCH.
4. EF-1= 50 CFM EXHAUST FAN REQUIRED FOR THERMAL ZONE III THERMAL ZONES I & II MAY USE FAN OR WINDOW W/1.5 SQ. FT. OPENABLE GLASS.
5. EF-2= 50 CFM EXHAUST FAN REQUIRED THERMAL ZONE I, II, AND III.
6. EF-3= 100 CFM RANGE EXHAUST FAN, SWITCH AT HOOD.
7. EF-4= WHOLE HOUSE VENTILATION REQUIREMENTS PER DAPIA MANUAL.
8. REFER TO DAPIA MANUAL OR THE MFG. INSTALLATION INSTRUCTIONS FOR PROPER WIRE SIZE AND BREAKER SIZE FOR SPECIFIC APPLIANCE AND MODEL BEING INSTALLED.
9. ALL SMOKE ALARMS TO BE LOCATED ON THE CEILING.
10. CARBON MONOXIDE ALARMS ARE ONLY REQUIRED WHEN HOME HAS EITHER FUEL BURNING APPLIANCES, IS GARAGE READY OR IS BASEMENT READY. REFERENCE DAPIA MANUAL FOR ADDITIONAL INFORMATION.
11. DIMENSIONS SHOWN ON PRINT ARE APPROXIMATE AND TO BE USED ONLY AS A GUIDELINE.





APPROVED **HWG** **APPROVED**
 25 MAY 2023
 FP-28-5642
 Federal Manufactured Home Construction And Safety Standards

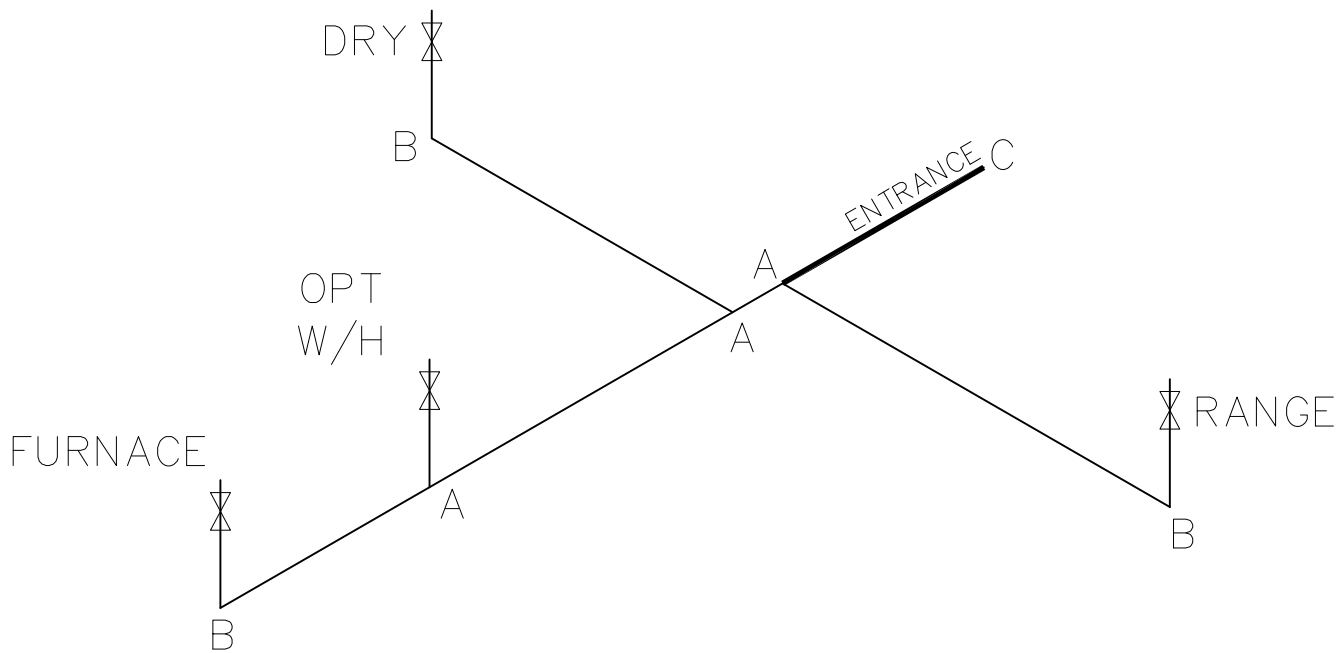
1,790 SQ.FT. (STD PLAN "CONDITIONED")
 N/A SQ.FT. (W/OPT. PORCH/RECESS "CONDITIONED")

CMH MANUFACTURING	Model #: NXT28684C	Drawing #:
	Date: 5.1.23	Scale: N.T.S.
Product Designer: FrenchB	28' x 68' ANGELINA	
ELECTRICAL PLAN		

LEGEND		APPLIANCE BTU's RATINGS MAX. INPUT	
SYM	FITTINGS		
A	TEE	FURNACE	65,000 BTU'S
B	90 ELL	W/H	37,000 BTU'S
X	VALVE	RANGE	52,000 BTU'S
C	CAP	DRYER	22,000 BTU'S


MDL = 25'

GAS LINE SIZE CHART	
	= 1"
	= 3/4"



NOTES:

- 1) ALL PIPE IS 3/4" I.D. CAST (EXCEPT WHERE NOTED OTHERWISE)
- 2) MDL=MAX. DETERMINED LENGTH OF PIPE
- 3) FITTING MAY BE ADDED OR SUBTRACTED TO TRAVERSE VARIATIONS IN AXLE QUANTITY, PLACEMENT, AND FRAME TYPE.
- 4) INLET LOCATION MAY VARY TO STAY WITHIN MAX. DETERMINED LENGTH

APPROVED

APPROVED

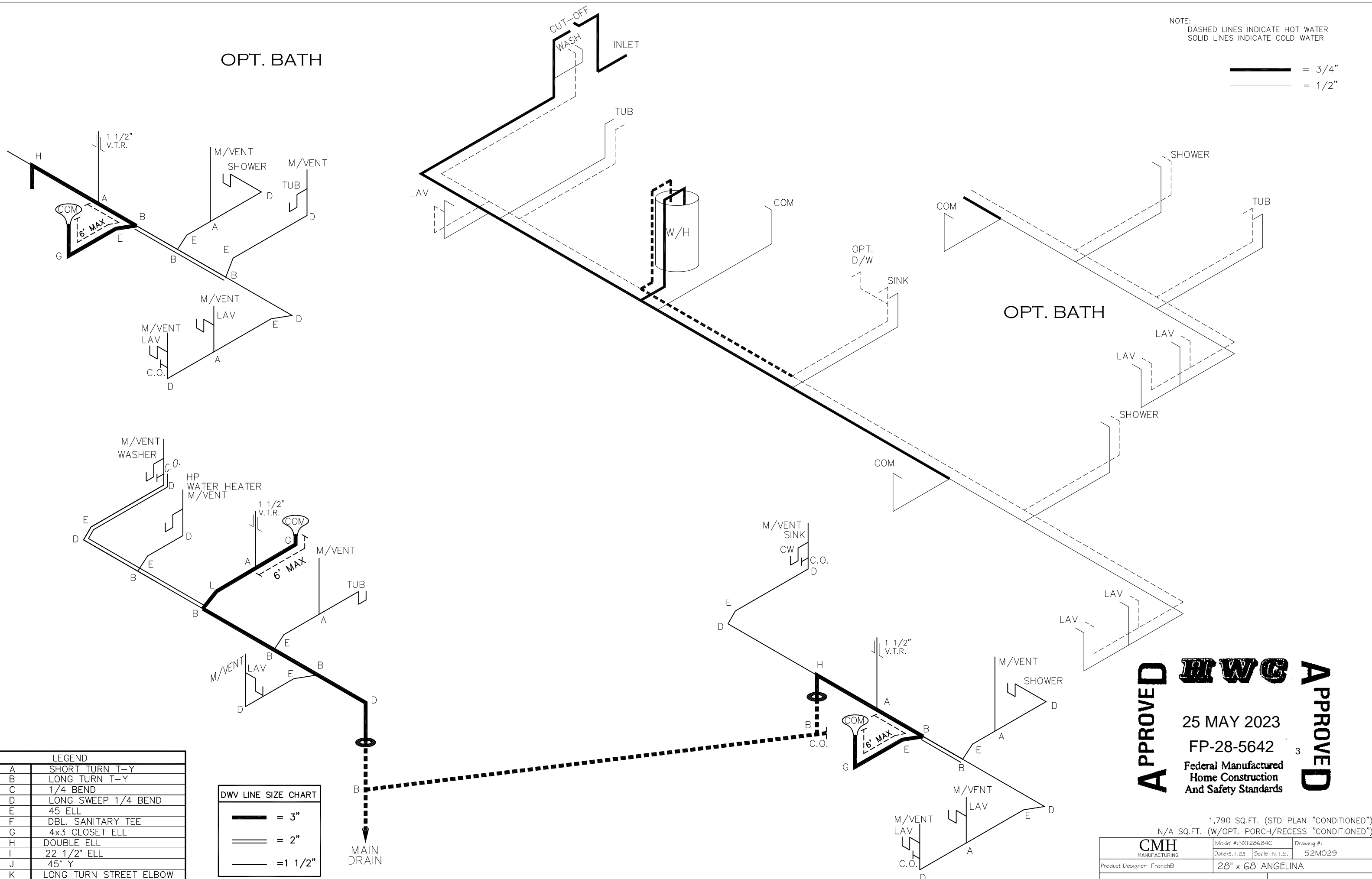
25 MAY 2023
 FP-28-5642
 Federal Manufactured
 Home Construction
 And Safety Standards

1,790 SQ.FT. (STD PLAN "CONDITIONED")	
N/A SQ.FT. (W/OPT. PORCH/RECESS "CONDITIONED")	
CMH MANUFACTURING	Model #: NXT28684C Date: 5.1.23 Scale: N.T.S.
Product Designer: FrenchB	Drawing #: 52MO29
28" x 68' ANGELINA	
GAS LINE DETAIL	

NOTE:
 DASHED LINES INDICATE HOT WATER
 SOLID LINES INDICATE COLD WATER

— = 3/4"
 — = 1/2"

OPT. BATH



LEGEND	
A	SHORT TURN T-Y
B	LONG TURN T-Y
C	1/4 BEND
D	LONG SWEEP 1/4 BEND
E	45 ELL
F	DBL. SANITARY TEE
G	4x3 CLOSET ELL
H	DOUBLE ELL
I	22 1/2° ELL
J	45° Y
K	LONG TURN STREET ELBOW
L	45 FTG ELL

DWV LINE SIZE CHART	
—	= 3"
—	= 2"
—	= 1 1/2"

APPROVED **HWG** **APPROVED**

25 MAY 2023
 FP-28-5642
 Federal Manufactured
 Home Construction
 And Safety Standards

1,790 SQ.FT. (STD PLAN "CONDITIONED")		N/A SQ.FT. (W/OPT. PORCH/RECESS "CONDITIONED")	
CMH MANUFACTURING	Model #: NXT28604C	Drawing #:	
Product Designer: FrenchB	Date: 5.1.23	Scale: N.T.S.	52M029
28" x 68' ANGELINA			
D.W.V. and Supply Lines			