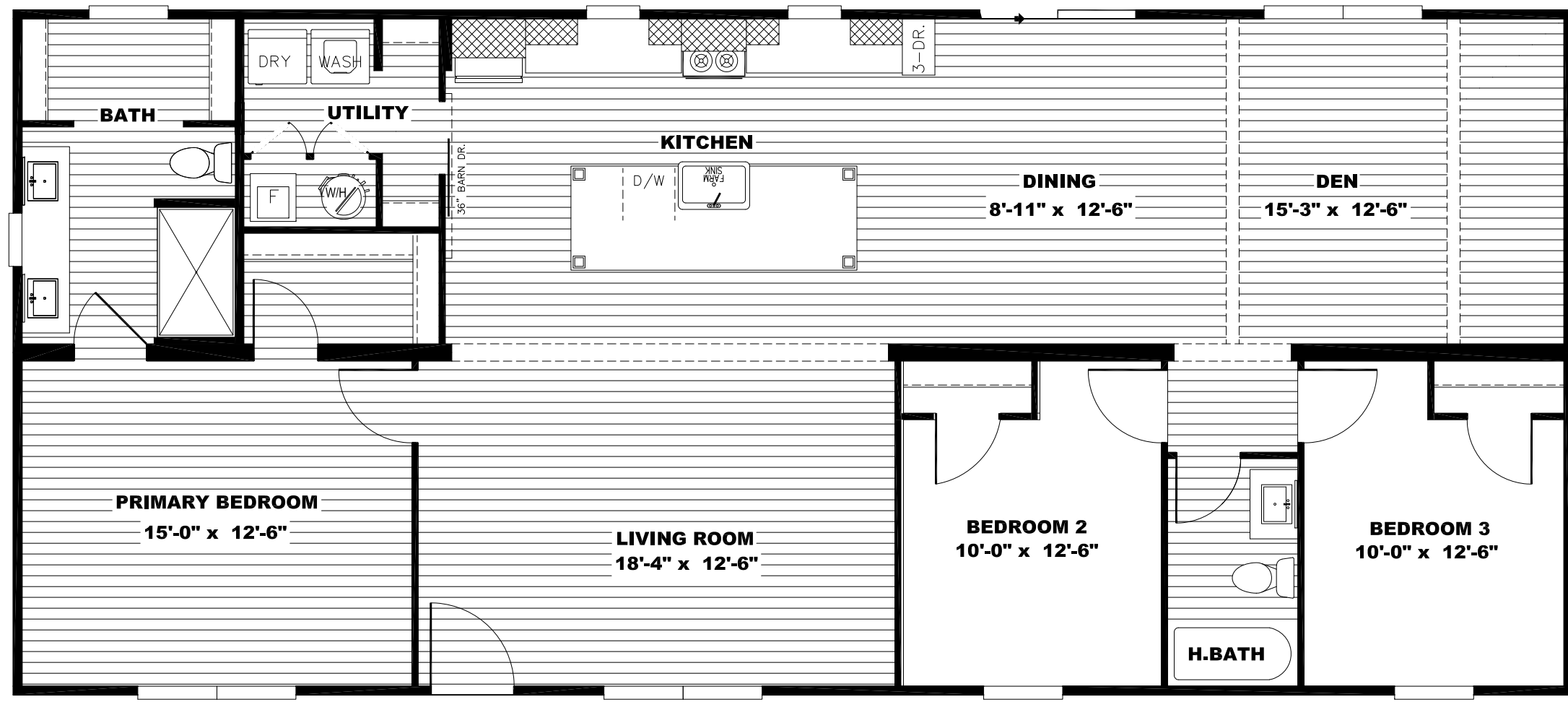


OPT. BATH



MODEL #NXI28603A

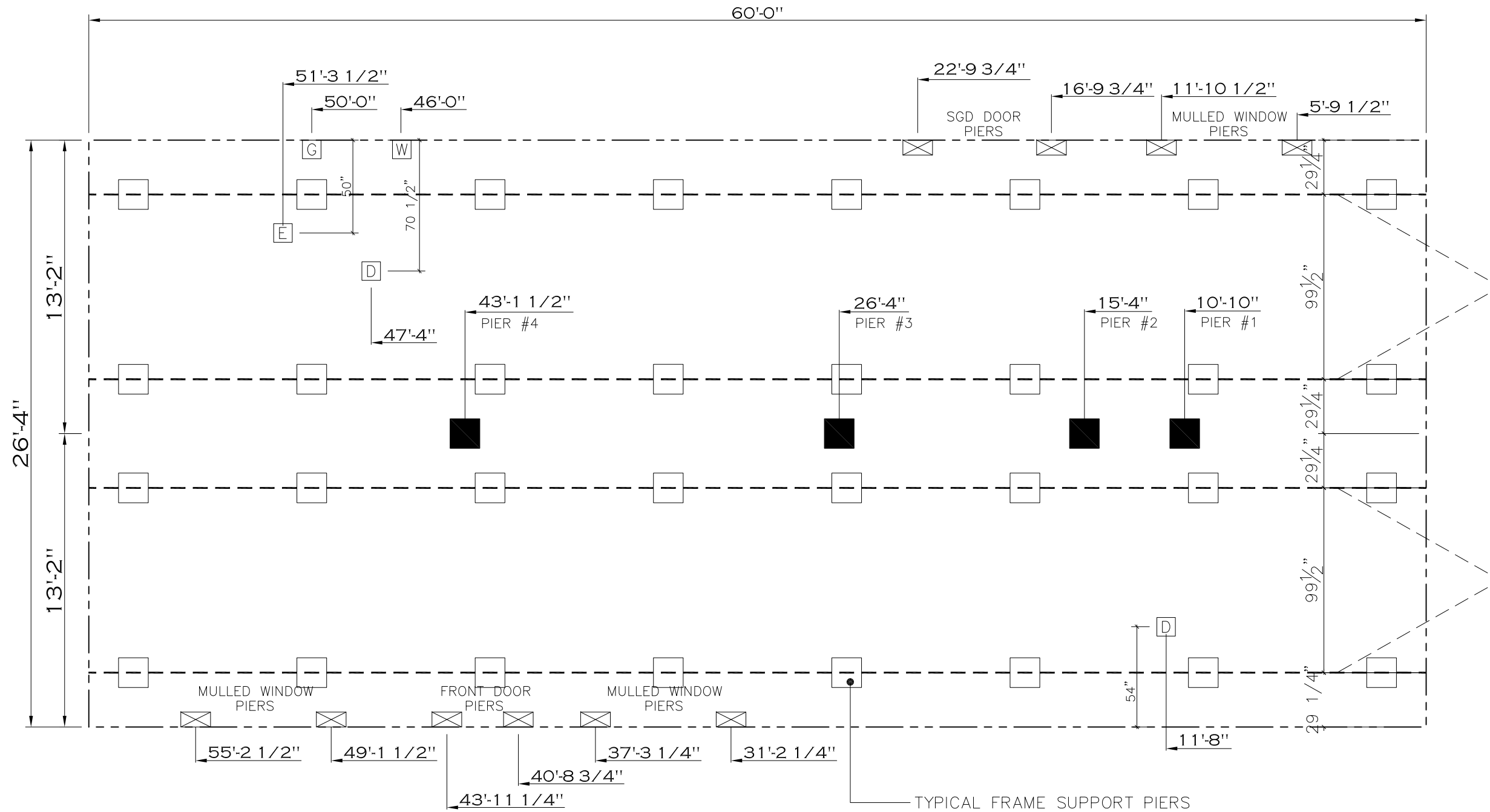
DRAWING # 52M004

28'x60' ISABELLA

20 psf Roof Live Load		
Column Pier #	Distance from Hitch	Pier Load (lbs)
1	10.833	1289
2	15.333	1289
3	26.333	3716
4	43.125	3716

30 psf Roof Live Load		
Column Pier #	Distance from Hitch	Pier Load (lbs)
1	10.833	2638
2	15.333	2638
3	26.333	5875
4	43.125	5875

40 psf Roof Live Load		
Column Pier #	Distance from Hitch	Pier Load (lbs)
1	10.833	3198
2	15.333	3198
3	26.333	7244
4	43.125	7244

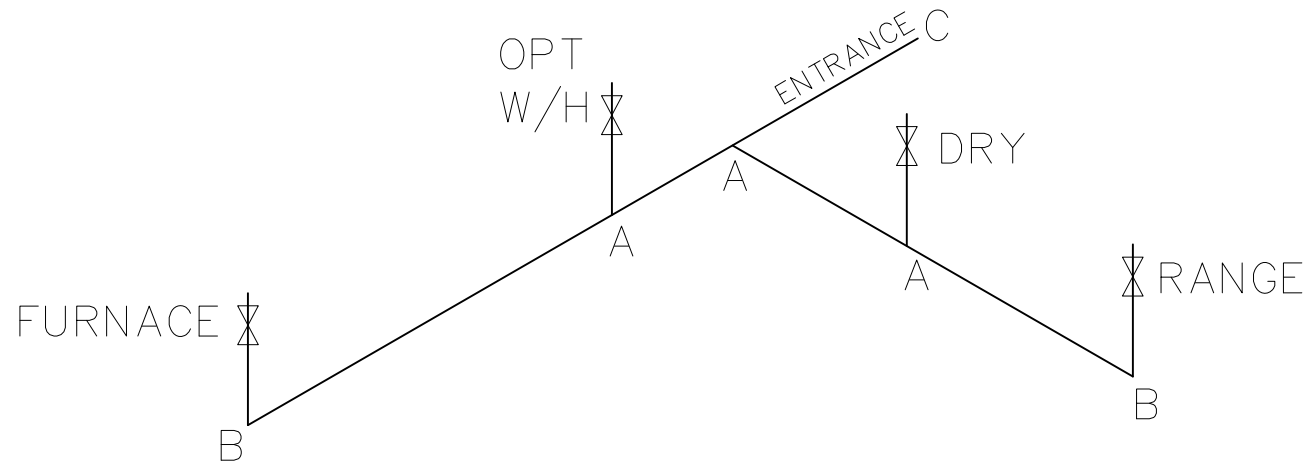


REV:-6/9/2023 3:01 PM

1,580 SQ.FT. (STD PLAN "CONDITIONED")		
N/A SQ.FT. (W/OPT. PORCH/RECESS "CONDITIONED")		
CMH MANUFACTURING	Model #: NXT28603A	Drawing #:
Product Designer: FrenchB	Date: 4.12.18	Scale: N.T.S.
28' x 60' NXT		52MO04
SERVICE		

LEGEND		APPLIANCE BTU's RATINGS MAX. INPUT	
SYM	FITTINGS		
A	TEE	FURNACE	65,000 BTU'S
B	90 ELL	W/H	37,000 BTU'S
X	VALVE	RANGE	52,000 BTU'S
C	CAP	DRYER	22,000 BTU'S

MDL=22'



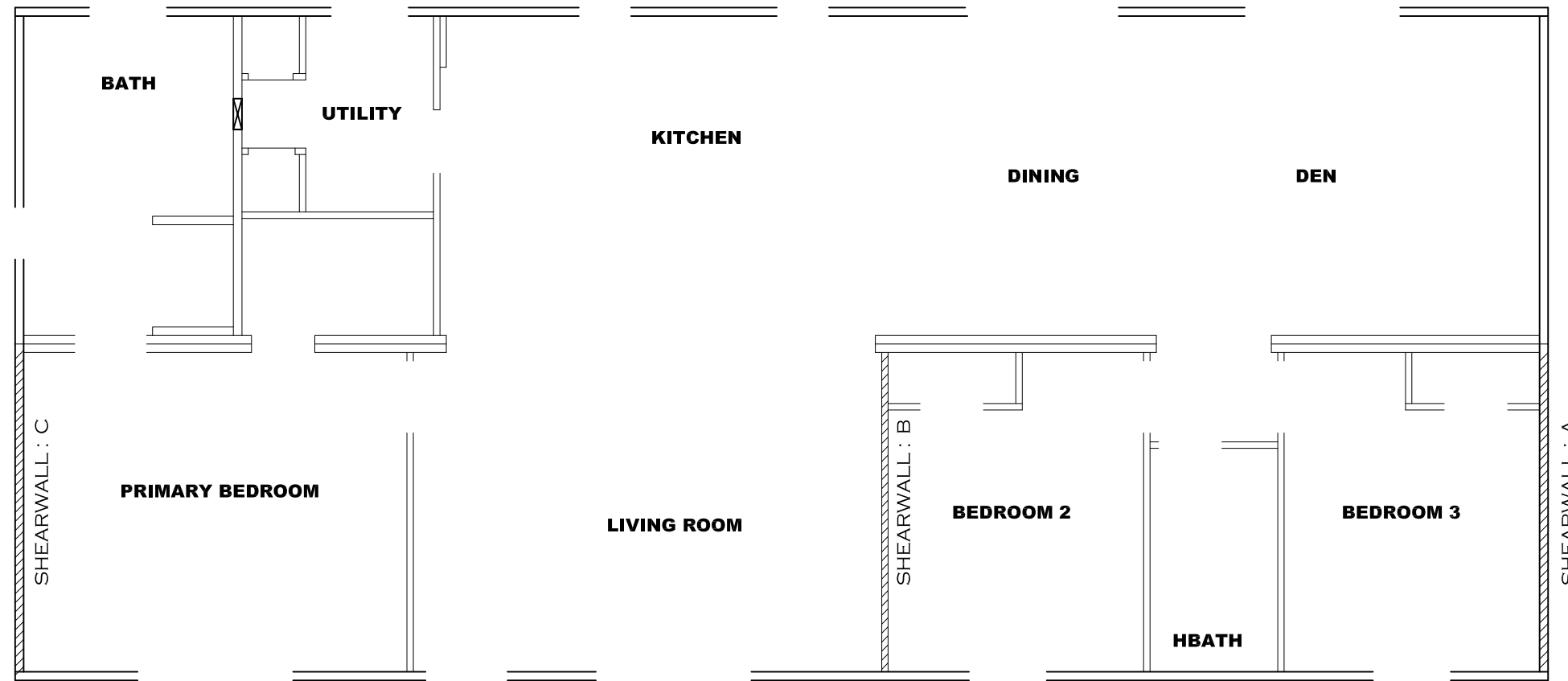
NOTES:

- 1) ALL PIPE IS 3/4" I.D.CAST (EXCEPT WHERE NOTED OTHERWISE)
- 2) MDL=MAX. DETERMINED LENGTH OF PIPE
- 3) FITTING MAY BE ADDED OR SUBTRACTED TO TRAVERSE VARIATIONS IN AXLE QUANTITY, PLACEMENT, AND FRAME TYPE.
- 4) INLET LOCATION MAY VARY TO STAY WITHIN MAX. DETERMINED LENGTH

GAS LINE SIZE CHART	
	= 1"
	= 3/4"

APPROVED
HWC
 REVISED
 26 APR 2023
 FP-28-5117
 Federal Manufactured
 Home Construction
 And Safety Standards
APPROVED

1,580 SQ.FT. (STD PLAN "CONDITIONED")	
N/A SQ.FT. (W/OPT. PORCH/RECESS "CONDITIONED")	
CMH MANUFACTURING	Model #: NXT28603A Date: 4.12.18 Scale: N.T.S.
Product Designer: FrenchB	Drawing #: 52M004
28' x 60' NXT	
GAS LINE DETAIL	



Model # 52M004

Box Width = 158 " Double wide No Offset Box
 Box Length = 60 ft. 99.5" 10" MIN. IBEAM No Clerestory
 No Skylights No Origami Dormer
 No Porches No Sunken Floor
 Joist Size = #2 spf 2x6 Lags 9Mx3" No Parapet Roof

Minimum Joist Spacing 16 "

Version R13.19

Wind Zone 1 Standard Roof (3/8" sheathing only with 15 gax 1.5" at 5"/10" 96 inch sidewall
 Diaphragm Construction: oc. (197 plf) Chords: 2x4 SPF #3 Top Plate spliced w/ 12" glue block & 1x6 SPF Rail

Shearwall	Dist./ Hitch	Length	PLF	# of Joists	Lags	Notes
A	0'	136"	162	2	2/1	
C	60'	136"	162	2	2/1	

Wind Zone 2 Standard Roof (3/8" sheathing only with 15 gax 1.5" at 5"/10" 96 inch sidewall
 Diaphragm Construction: oc. (197 plf) Chords: 2x4 SPF #3 Top Plate & 1x4 Rail. Each spliced w/ 12" glue block.

Shearwall	Dist./ Hitch	Length	PLF	# of Joists	Lags	Notes
A	0'	Full	162	2	1/1	
B	25.96'	Full	425	2	2/2	
C	60'	Full	425	2	4/4	

Wind Zone 3 Standard Roof (3/8" sheathing only with 15 gax 1.5" at 5"/10" 96 inch sidewall
 Diaphragm Construction: oc. (197 plf) Chords: 2x4 SPF #3 Top Plate spliced w/ 2x4 MCP & 1x6 SPF Rail spliced w/

Shearwall	Dist./ Hitch	Length	PLF	# of Joists	Lags	Notes
A	0'	Full	425	2	4/4	
B	25.96'	Full	515	2	4/4	
C	60'	Full	425	2	4/4	

APPROVED

HWG

APPROVED

REVISED
22 MAR 2021
FP-28-5117
Federal Manufactured
Home Construction
And Safety Standards

1,580 SQ.FT. (STD PLAN "CONDITIONED")
 N/A SQ.FT. (W/OPT. PORCH/RECESS "CONDITIONED")

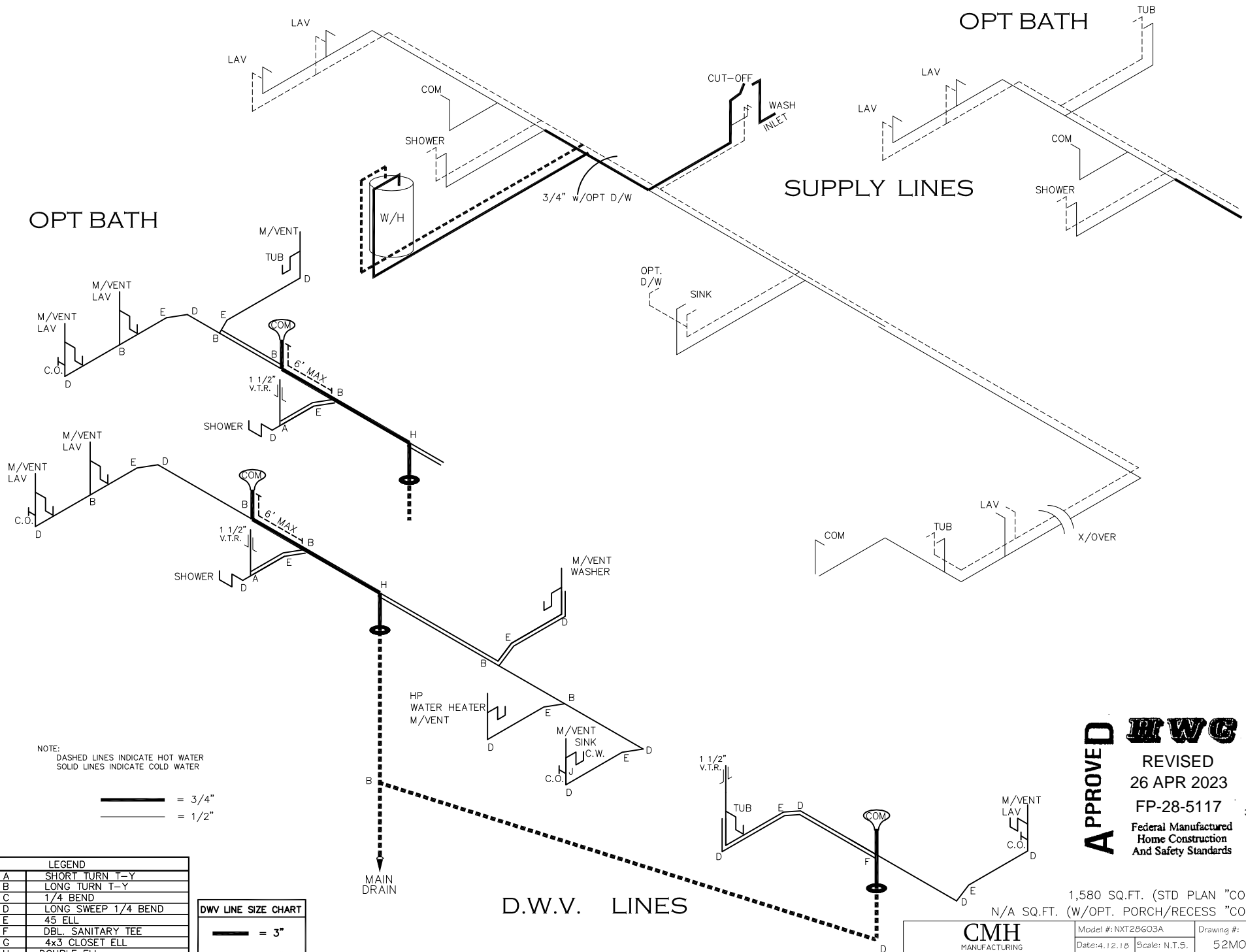
CMH MANUFACTURING	Model #: NXT28603A	Drawing #:
	Date: 4.12.18	Scale: N.T.S. 52M004
Product Designer: HuitingJ		28' x 60' NXT
Shearwall Page		

OPT BATH

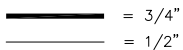
OPT BATH

SUPPLY LINES

D.W.V. LINES



NOTE:
DASHED LINES INDICATE HOT WATER
SOLID LINES INDICATE COLD WATER



LEGEND	
A	SHORT TURN T-Y
B	LONG TURN T-Y
C	1/4 BEND
D	LONG SWEEP 1/4 BEND
E	45 ELL
F	DBL. SANITARY TEE
G	4x3 CLOSET ELL
H	DOUBLE ELL
I	22 1/2° ELL
J	45° Y
K	LONG TURN STREET ELBOW
L	45 FTG ELL

DWV LINE SIZE CHART	
—	= 3"
—	= 2"
—	= 1 1/2"

APPROVED **HWG** **APPROVED**
 REVISED
 26 APR 2023
 FP-28-5117
 Federal Manufactured
 Home Construction
 And Safety Standards

1,580 SQ.FT. (STD PLAN "CONDITIONED")
 N/A SQ.FT. (W/OPT. PORCH/RECESS "CONDITIONED")

CMH MANUFACTURING	Model #: NXT28603A	Drawing #:
	Date: 4.12.18	Scale: N.T.S. 52M004
Product Designer: FrenchB		28' x 60' NXT
D.W.V. and Supply Lines		