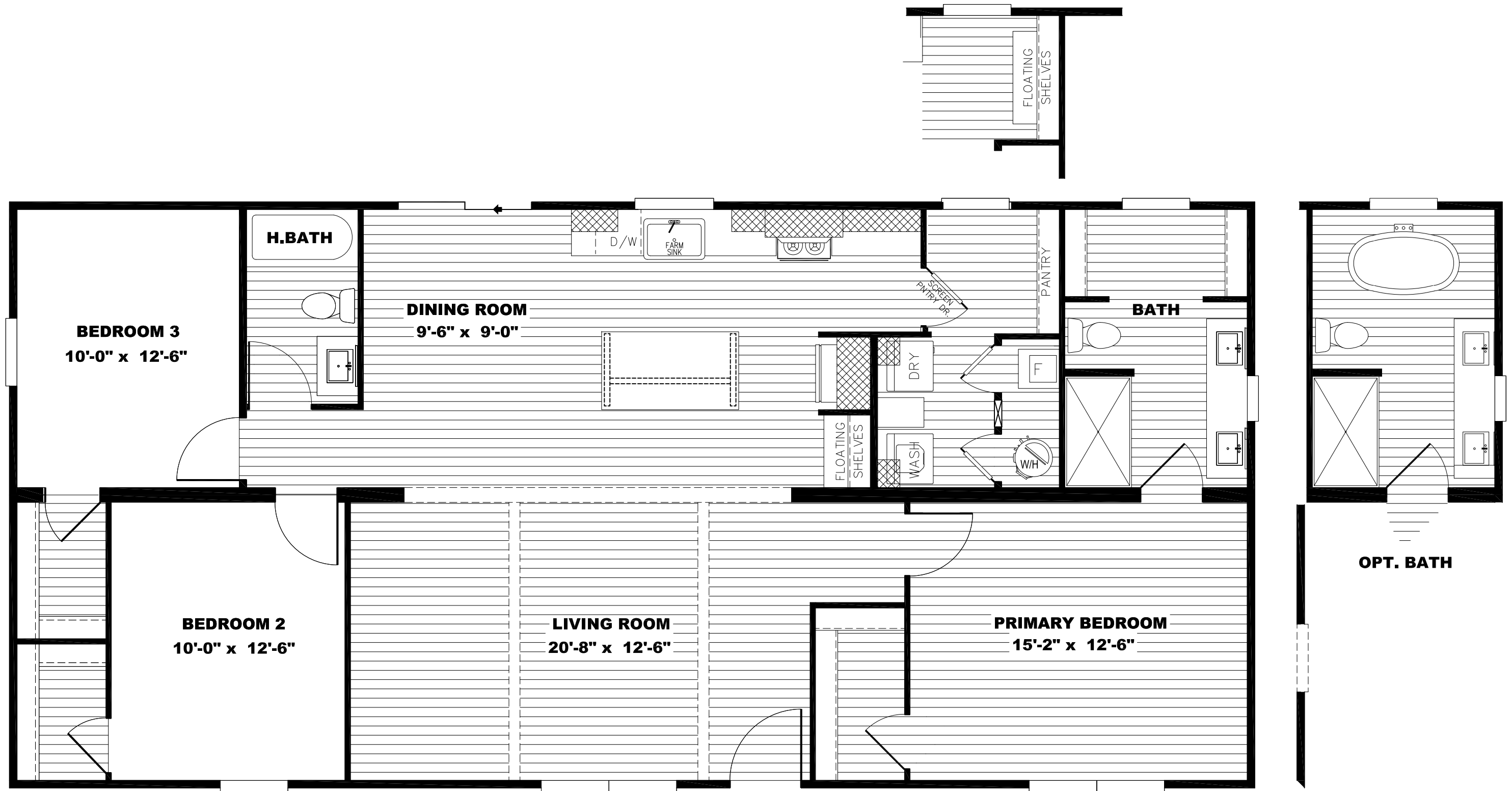
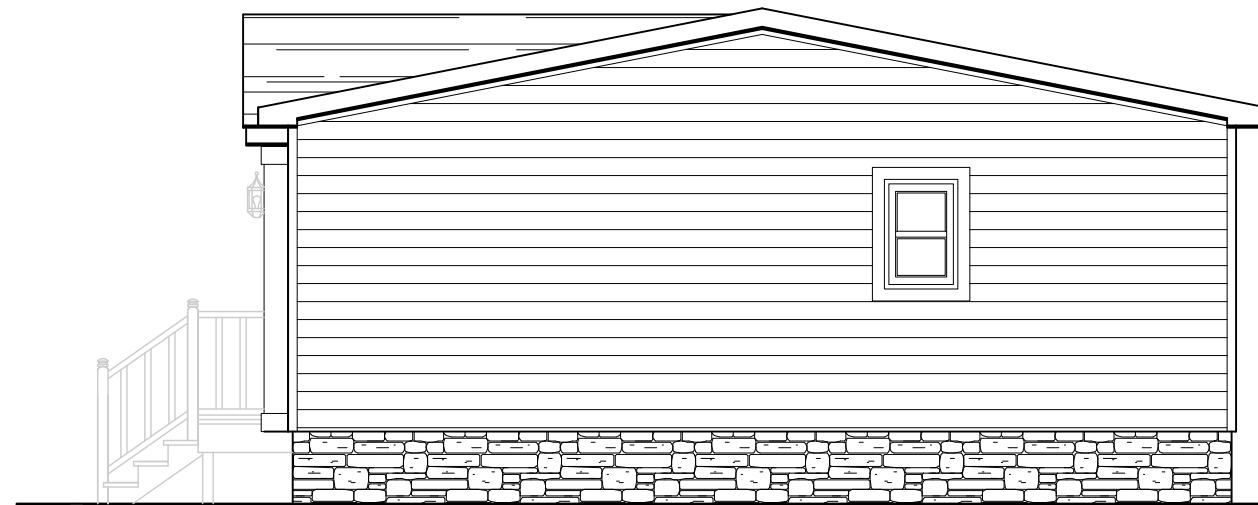
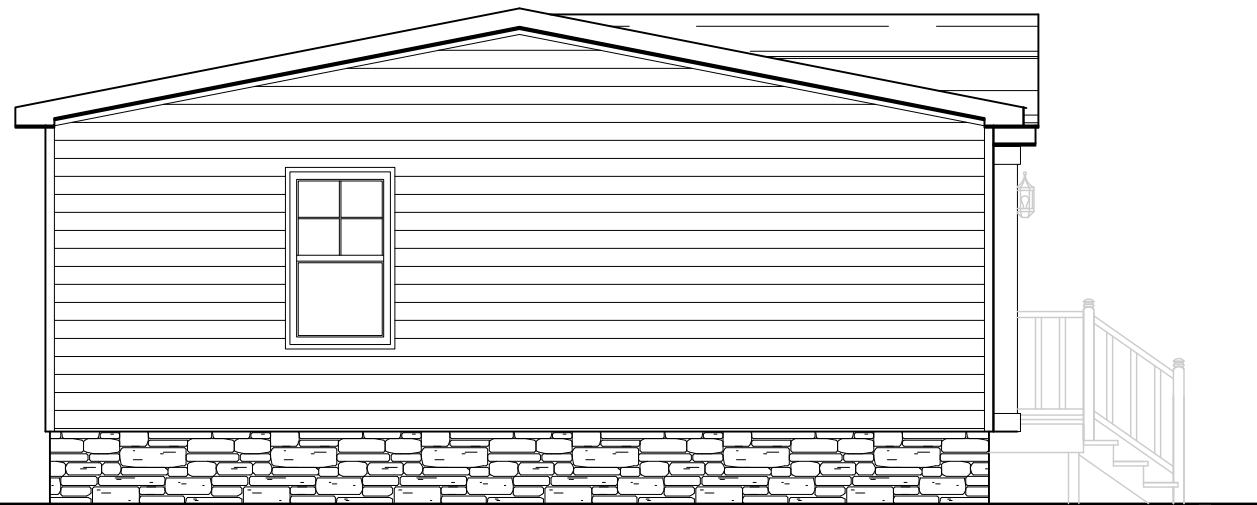
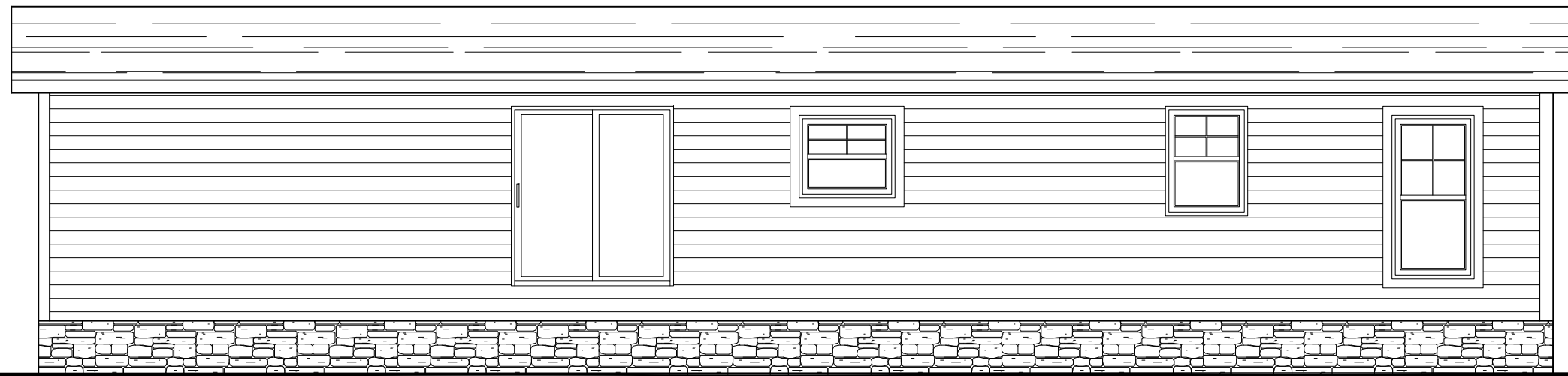
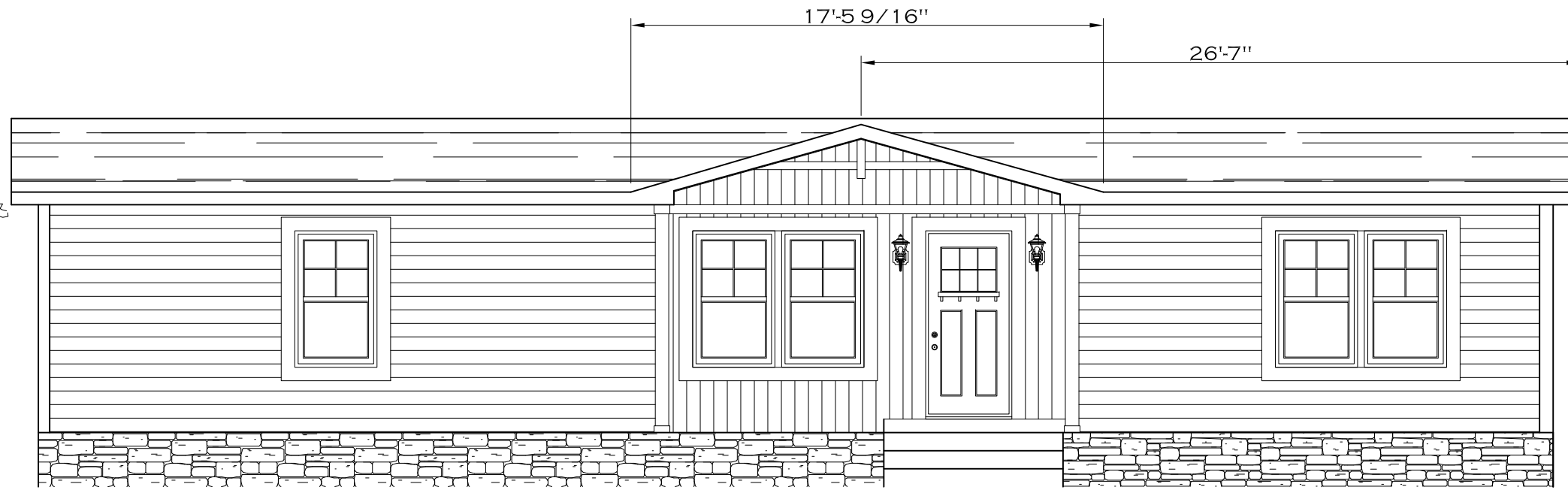
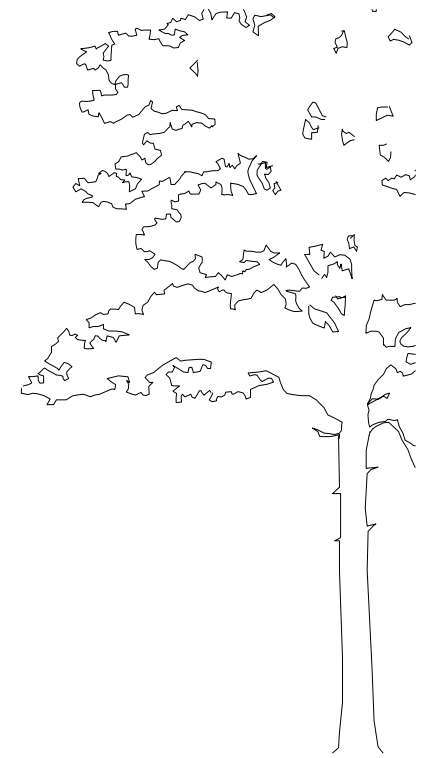
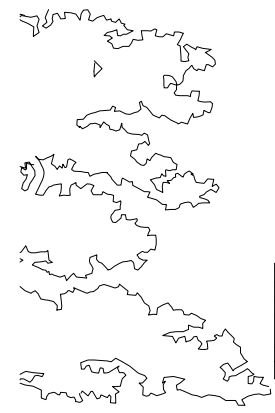


COFFEE BAR OPTION



MODEL #NXT28563C
DRAWING # 52M027
28' x 56' LIZZIE



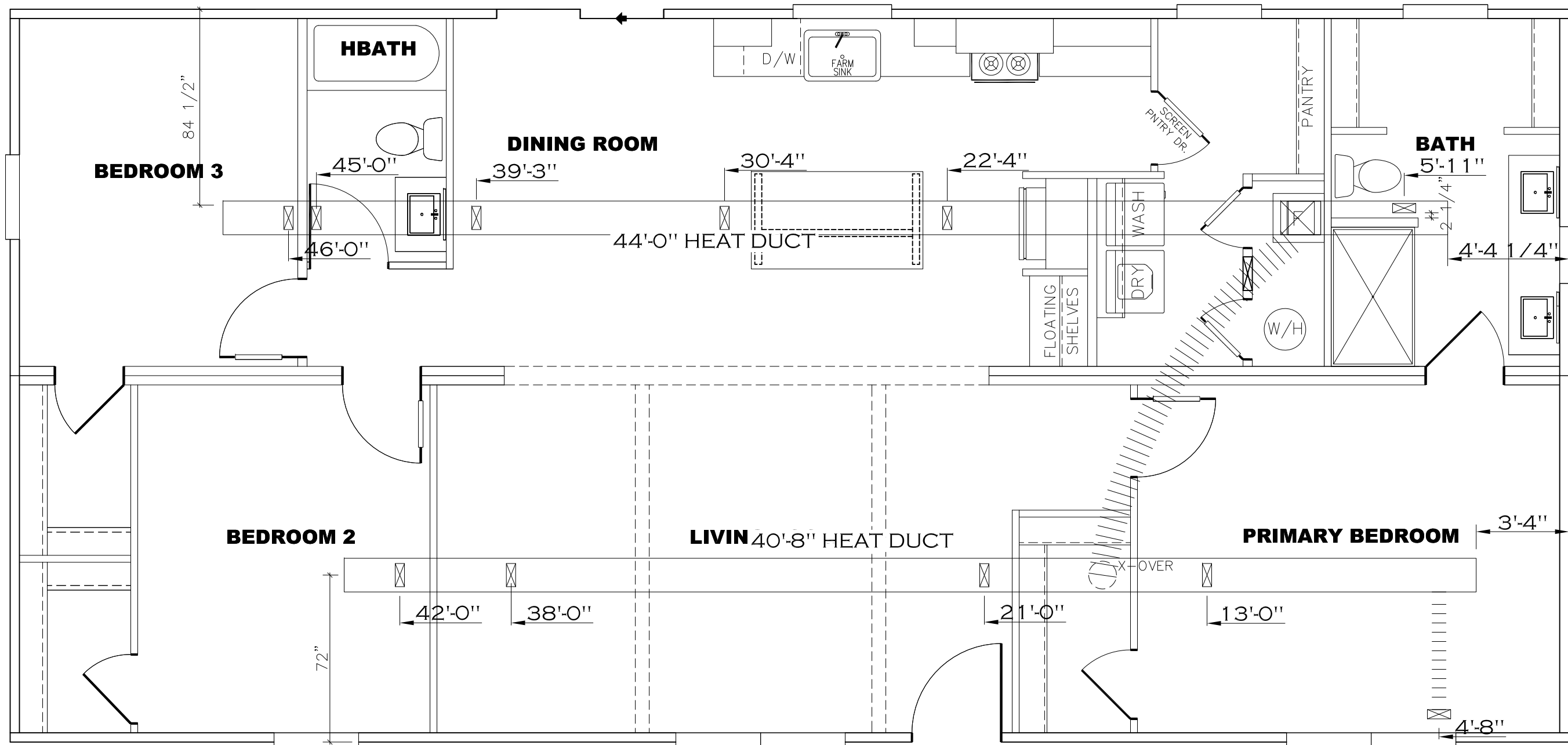
LEFT SIDE ELEVATION

RIGHT SIDE ELEVATION

1,474 SQ.FT. (STD PLAN "CONDITIONED")

REV:-3/24/2023 2:58 PM

N/A		1,474 SQ.FT. (STD PLAN "CONDITIONED")	
CMH MANUFACTURING	Model #: NXT28563B	Drawing #:	
	Date: 4.12.18	Scale: N.T.S.	52MO27
Product Designer: FrenchB		28' x 56' LIZZIE	
ELEVATION			



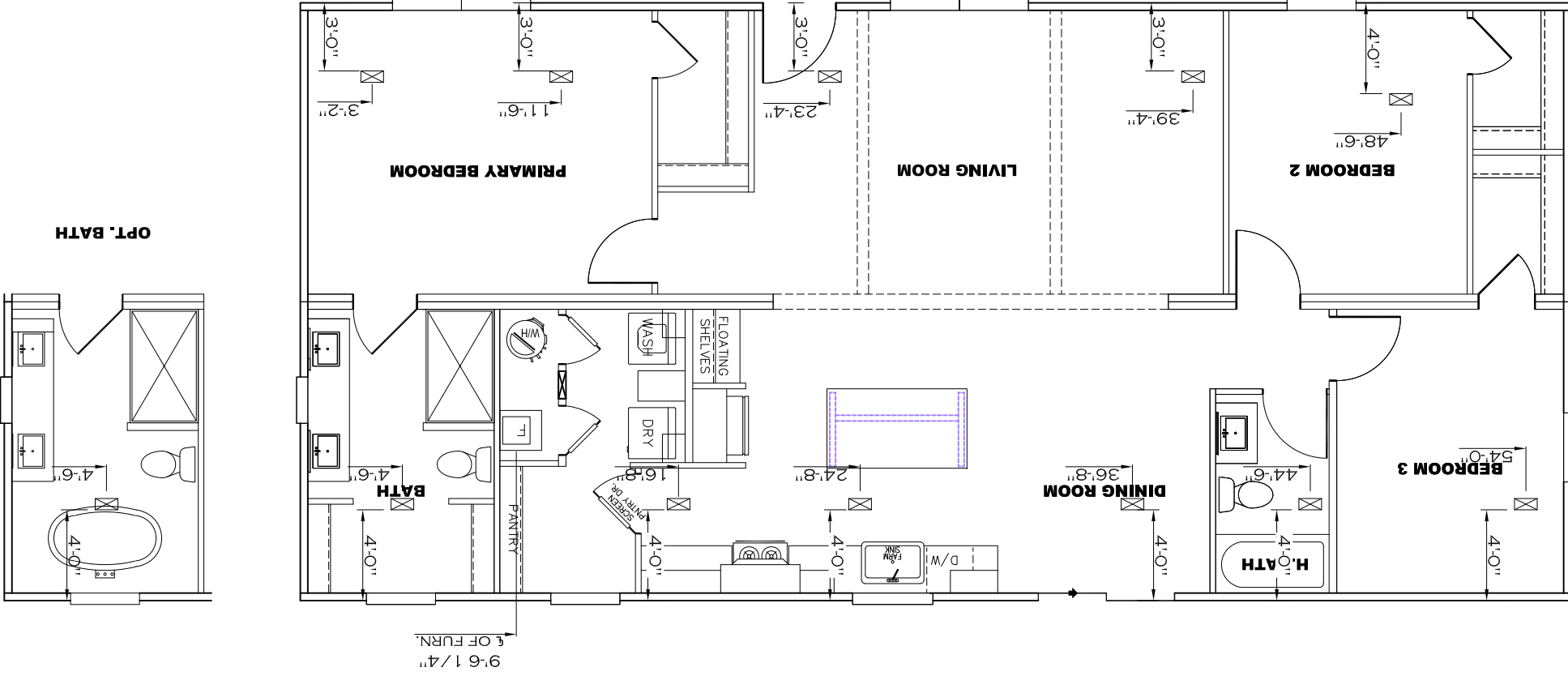
REV:-3/24/2023 3:01 PM

1,474 SQ.FT. (STD PLAN "CONDITIONED")
 N/A SQ.FT. (W/OPT. PORCH/RECESS "CONDITIONED")

CMH MANUFACTURING	Model #: NKT28563B	Drawing #:
	Date: 4.12.18	Scale: N.T.S.
Product Designer: FrenchB	28' x 56' LIZZIE	
HEAT DUCT		

OVERHEAD DUCT	
Product Designer: Frenchb	28' x 56' LIZIE
Model #: NKT28563B	Date: 12.18
Drawing #:	Scale: N.T.S.
52M027	
CMH MANUFACTURING	

1,474 SQ.FT. (STD PLAN "CONDITIONED")
 N/A SQ.FT. (W/OPT. PORCH/RECESS "CONDITIONED")



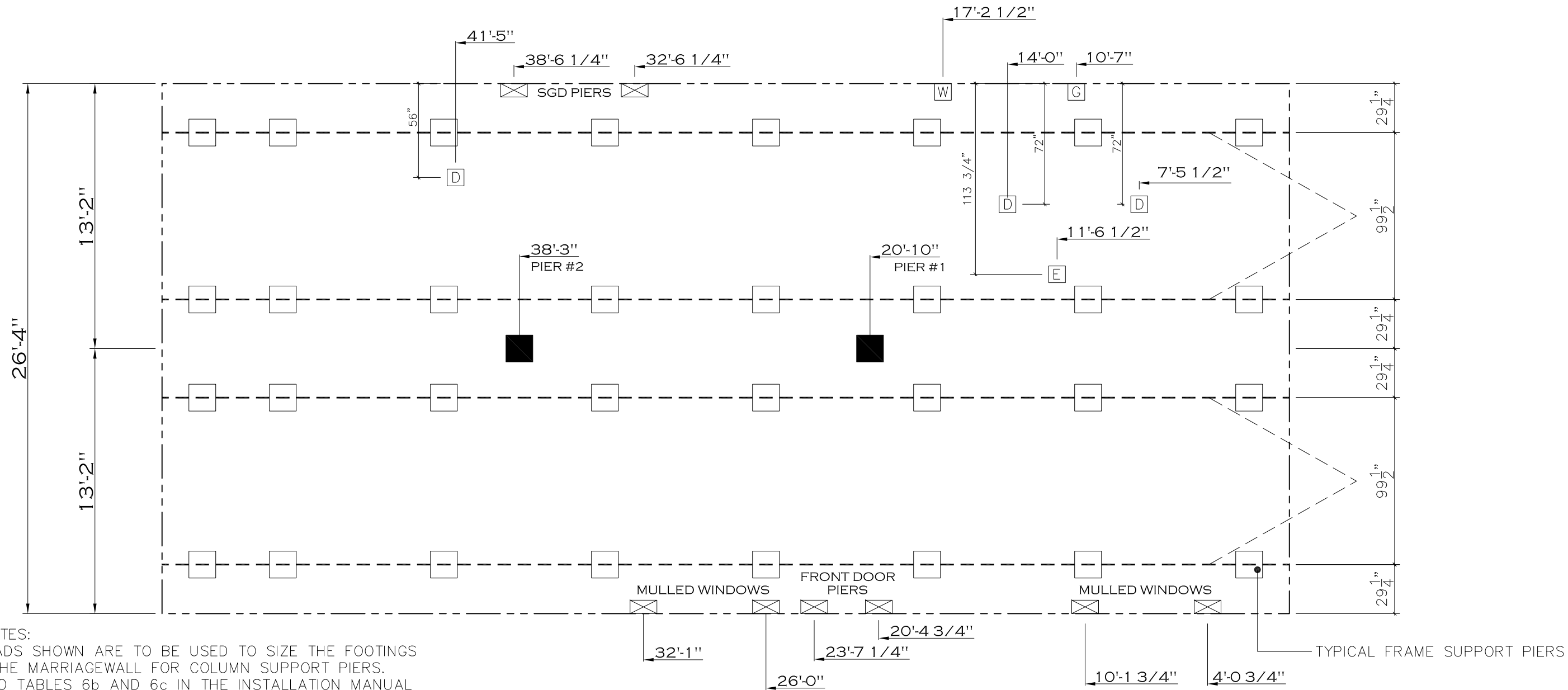
20 lb ROOF LOAD SIDEWALL OPENING PIER LOAD 28' BOX WIDTH	SIDEWALL OPENING (FT) REQUIRED PIER LOAD (LBS)					
	3	4	5	6	8	10
	1175	1330	1485	1640	1950	2260

20 psf Roof Live Load			
Column Pier #	Distance from Hitch Feet	Inches	Pier Load (lbs)
1	20	10	3922
2	38	8	3922

30 psf Roof Live Load			
Column Pier #	Distance from Hitch	Pier Load (lbs)	
1	20.833	6149	
2	38.667	6149	

40 psf Roof Live Load			
Column Pier #	Distance from Hitch	Pier Load (lbs)	
1	20.833	7587	
2	38.667	7587	

*FOR 30 lb & 40 lb ROOF LOAD REFER TO TABLES 7b & 7c IN THE INSTALLATION MANUAL.



GENERAL NOTES:
 1. PIER LOADS SHOWN ARE TO BE USED TO SIZE THE FOOTINGS BELOW THE MARRIAGEWALL FOR COLUMN SUPPORT PIERS. REFER TO TABLES 6b AND 6c IN THE INSTALLATION MANUAL FOR LOAD ON FRAME PIER FOOTINGS FOR HOMES THAT DO NOT REQUIRE PERIMETER BLOCKING. REFER TO TABLES 7b AND 7c IN THE INSTALLATION MANUAL FOR LOAD ON FRAME PIER FOOTINGS THAT REQUIRE PERIMETER BLOCKING. REFER TO TABLES 10 AND 10a TO DETERMINE FOOTING SIZE FOR ALL PIERS.
 2. REFER TO TABLE 9 FOR PIER CONFIGURATION AND MAXIMUM ALLOWABLE HEIGHTS. CROSS REFERENCE THE PIER HEIGHT WITH THE MAXIMUM ALLOWABLE FLOOR HEIGHT LISTED IN THE FRAME TIEDOWN CHARTS (TABLE 18, 19, AND 20).
 3. FLOOR WIDTH SHOWN IS FOR STANDARD PRODUCT ONLY. CONTACT THE MFG PLANT FOR SPECIFICATIONS OF OPTIONS ORDERED.
 4. SERVICE DROP LOCATIONS IDENTIFIED ARE APPROXIMATE.
 5. THE MAXIMUM SPACING FOR FRAME SUPPORT PIERS FOR 8" I-BEAMS IS 8 FEET, 10" & 12" I-BEAMS ARE 10 FEET.

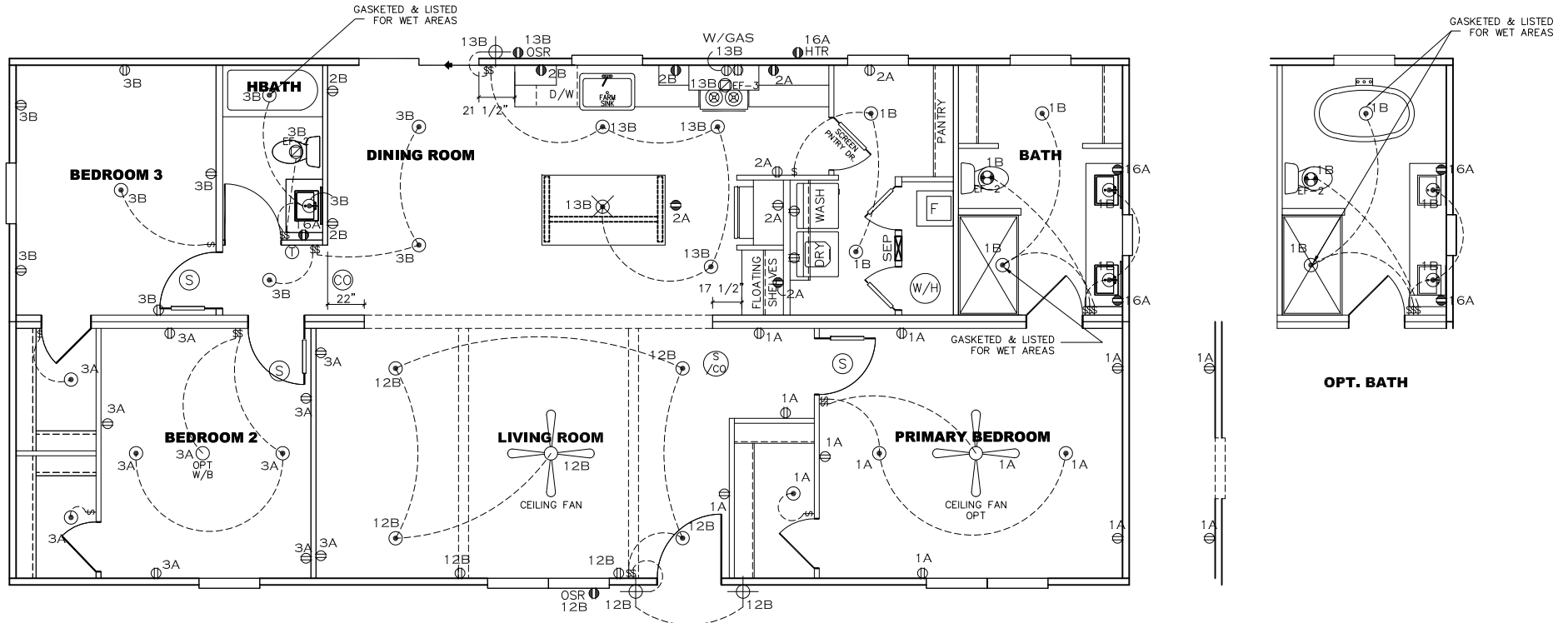
SERVICE DROP LEGEND	
[E]	= ELECTRICAL DROP
[W]	= WATER INLET
[D]	= DWV PLUMBING DROP
[G]	= GAS INLET

PIER LEGEND	
[□]	= SUPPORT UNDER MATING OPENING
[■]	= SUPPORT AT MATING COLUMN
[⊗]	= SUPPORT UNDER MATING WALL
[●]	= PIER PORCH/RECESSED ENTRY
[□]	= PIER MAIN BEAM
[⊗]	= PIER PERIMETER
[●]	= TIE-DOWN SUPPORT (QTY PER TBL M, SEE DETAIL D-6 IN FOUND. PKG.)

REV:-3/24/2023 3:03 PM

1,474 SQ.FT. (STD PLAN "CONDITIONED")	
N/A SQ.FT. (W/OPT. PORCH/RECESS "CONDITIONED")	
CMH MANUFACTURING	Model #: NKT28563B Date: 4.12.18 Scale: N.T.S. Drawing #: 52MO27
Product Designer: FrenchB	28' x 56' LIZZIE
PIER LOADS	

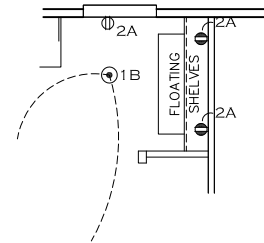
CIRCUIT	CIRCUIT #	WIRE	BREAKER	CIRCUIT	CIRCUIT #	WIRE	BREAKER	CIRCUIT	CIRCUIT #	WIRE	BREAKER
LIGHT/RECEP	1A,1B,3A,3B,12B,13B	14-2	15-SP	WATER HEATER	4A,6B	SEE NOTE #8		BATHROOM	16A	12-2	20-SP
KITCHEN	2A,2B,14A	12-2	20-SP	RANGE	5B,7A	SEE NOTE #8		OPT G/DISP	9B	SEE NOTE #8	
WASHER	12A	12-2	20-SP	FURNACE	6A,8A,B,10A,B	SEE NOTE #8		OPT SPA/WF/JAC	11A,B	SEE NOTE #8	
DRYER	5A,7B	SEE NOTE #8		OPT D/WASH	9A	SEE NOTE #8		FREEZER	N/A	SEE NOTE #8	
				SMOKE DECT.	4B	SEE NOTE #8					



NOTES:

- ALL CIRCUITS SHOWN ARE FOR REFERENCE AND MAY BE CHANGED BASED ON OPTIONAL COMPONENTS INSTALLED IN THE HOME.
- REFER TO DAPIA MANUAL FOR SYMBOL CHART.
- EITHER LIGHT OR RECEPTACLE MUST CONNECT TO SWITCH.
- EF-1= 50 CFM EXHAUST FAN REQUIRED FOR THERMAL ZONE III THERMAL ZONES I & II MAY USE FAN OR WINDOW W/1.5 SQ. FT. OPENABLE GLASS.
- EF-2= 50 CFM EXHAUST FAN REQUIRED THERMAL ZONE I, II, AND III.
- EF-3= 100 CFM RANGE EXHAUST FAN, SWITCH AT HOOD.
- EF-4= WHOLE HOUSE VENTILATION REQUIREMENTS PER DAPIA MANUAL.
- REFER TO DAPIA MANUAL OR THE MFG. INSTALLATION INSTRUCTIONS FOR PROPER WIRE SIZE AND BREAKER SIZE FOR SPECIFIC APPLIANCE AND MODEL BEING INSTALLED.
- ALL SMOKE ALARMS TO BE LOCATED ON THE CEILING.
- CARBON MONOXIDE ALARMS ARE ONLY REQUIRED WHEN HOME HAS EITHER FUEL BURNING APPLIANCES, IS GARAGE READY OR IS BASEMENT READY. REFERENCE DAPIA MANUAL FOR ADDITIONAL INFORMATION.
- DIMENSIONS SHOWN ON PRINT ARE APPROXIMATE AND TO BE USED ONLY AS A GUIDELINE.

COFFEE BAR OPTION

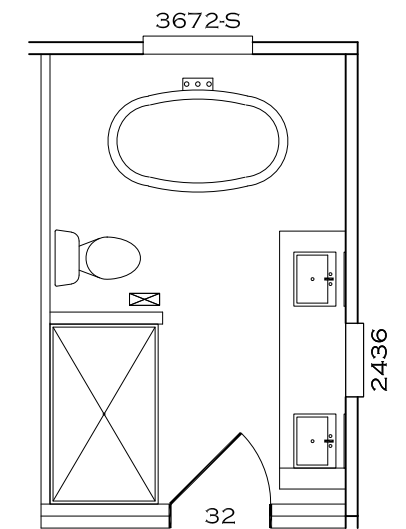
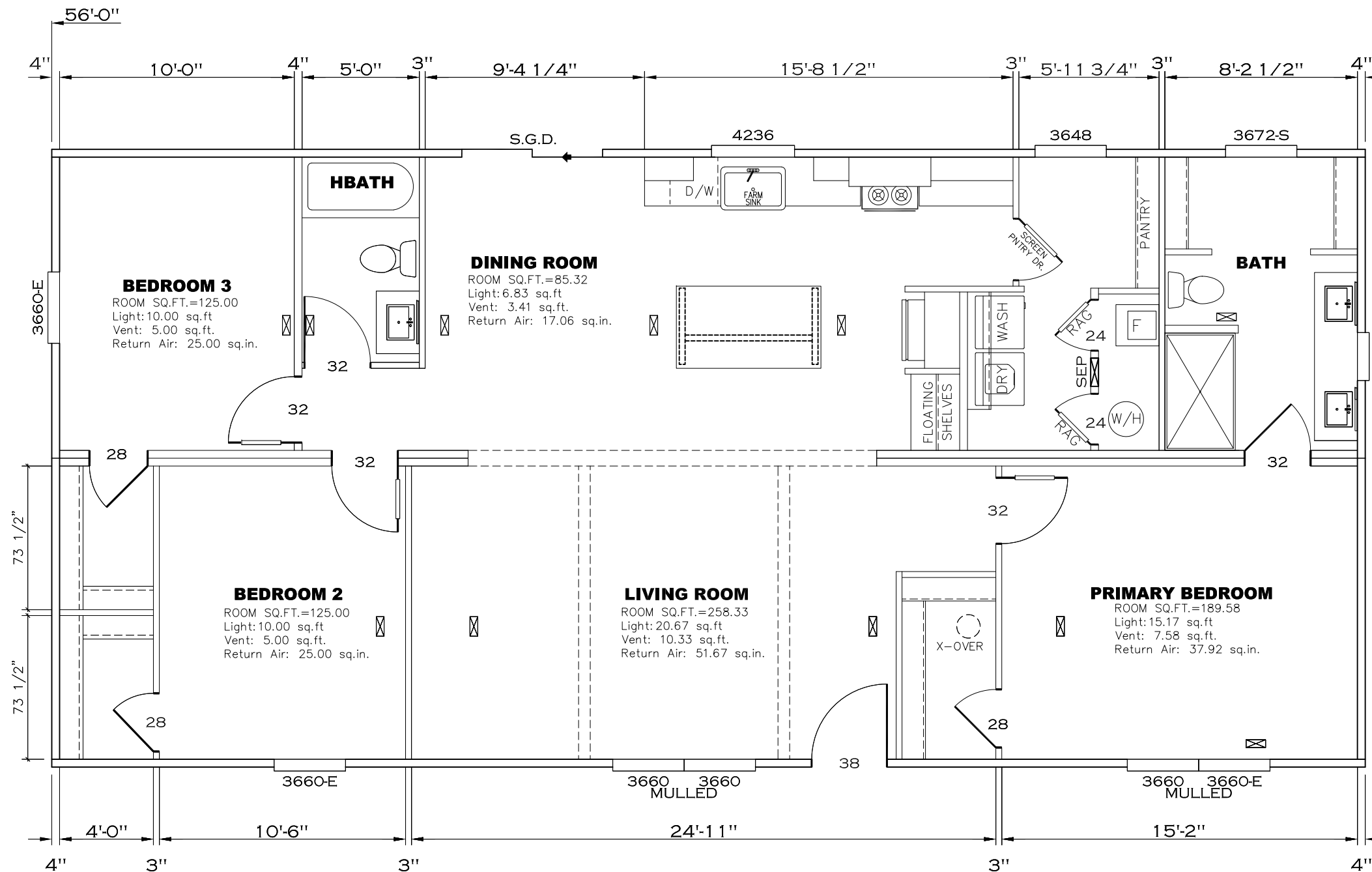
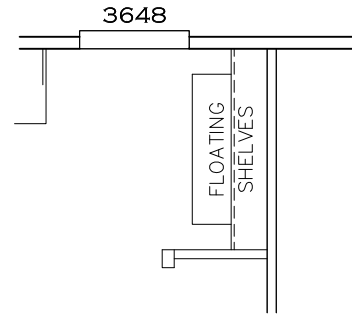


APPROVED **IWC** **APPROVED**
 27 MAR 2023
 FP-28-5623
 Federal Manufactured Home Construction And Safety Standards

1,474 SQ.FT. (STD PLAN "CONDITIONED")
 N/A SQ.FT. (W/OPT. PORCH/RECESS "CONDITIONED")

CMH MANUFACTURING	Model #: NXT28563B	Drawing #:
	Date: 4.12.18	Scale: N.T.S. 52M027
Product Designer: FrenchB	28' x 56' LIZZIE	
ELECTRICAL PLAN		

COFFEE BAR OPTION



OPT. BATH

APPROVED **RWC** **APPROVED**

27 MAR 2023
FP-28-5623
Federal Manufactured
Home Construction
And Safety Standards

1,474 SQ.FT. (STD PLAN "CONDITIONED")
N/A SQ.FT. (W/OPT. PORCH/RECESS "CONDITIONED")

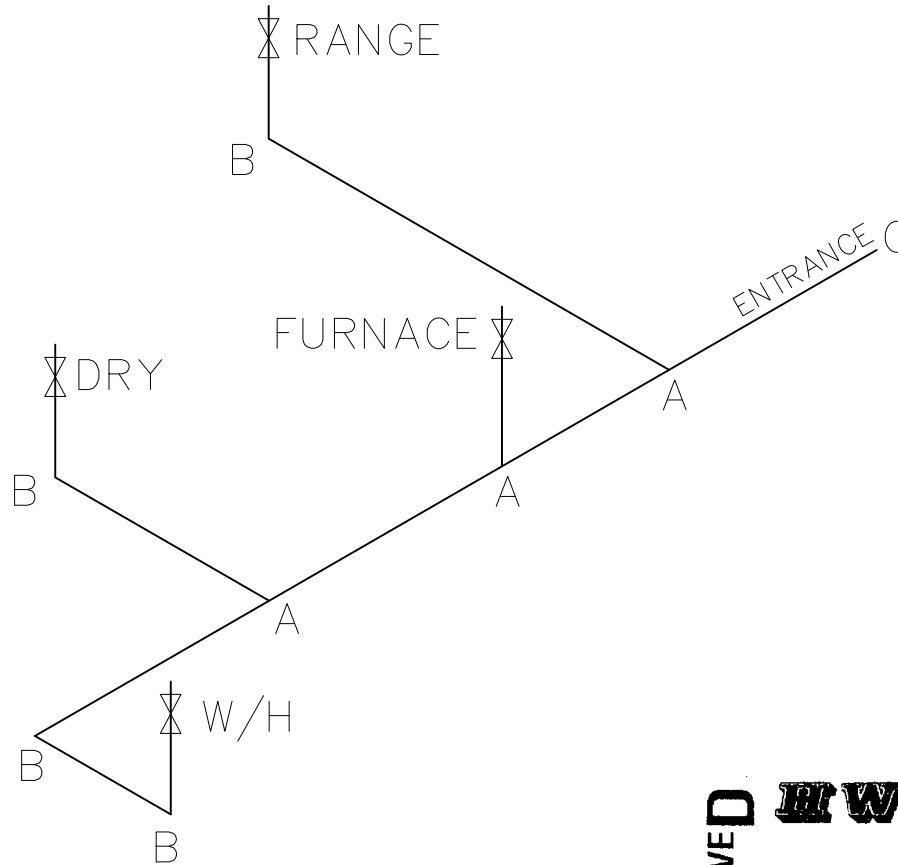
CMH MANUFACTURING	Model #: NXT28563B	Drawing #:
	Date:	Scale: N.T.S. 52MO27
Product Designer: FrenchB		28' x 56' LIZZIE
Floor Plan		

LEGEND		APPLIANCE BTU'S RATINGS MAX. INPUT	
SYM	FITTINGS		
A	TEE	FURNACE	65,000 BTU'S
B	90 ELL	W/H	37,000 BTU'S
X	VALVE	RANGE	52,000 BTU'S
C	CAP	DRYER	22,000 BTU'S

MDL = 25'

GAS LINE SIZE CHART

— = 1"
 — = 3/4"



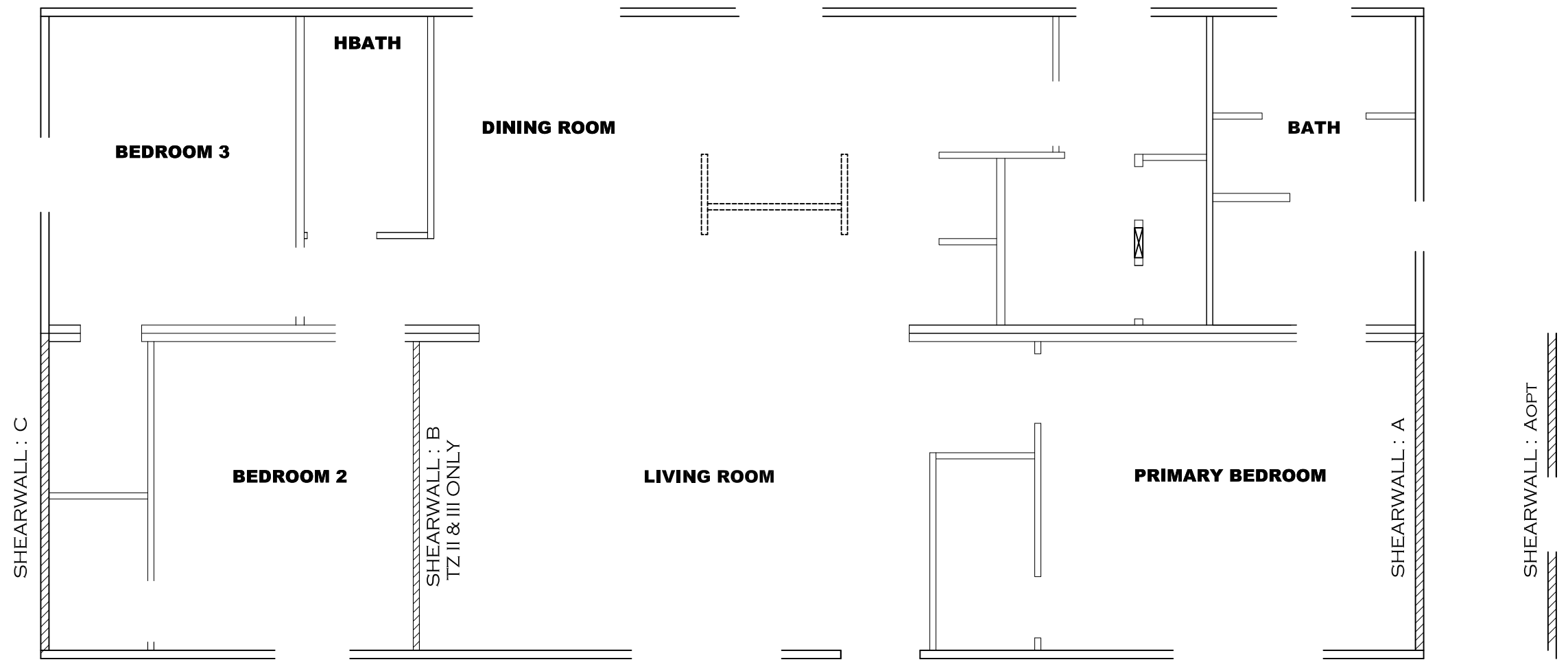
NOTES:

- 1) ALL PIPE IS 3/4" I.D. CAST (EXCEPT WHERE NOTED OTHERWISE)
- 2) MDL=MAX. DETERMINED LENGTH OF PIPE
- 3) FITTING MAY BE ADDED OR SUBTRACTED TO TRAVERSE VARIATIONS IN AXLE QUANTITY, PLACEMENT, AND FRAME TYPE.
- 4) INLET LOCATION MAY VARY TO STAY WITHIN MAX. DETERMINED LENGTH

APPROVED **HWG** **APPROVED**
 27 MAR 2023
 FP-28-5623
 Federal Manufactured Home Construction And Safety Standards

1,474 SQ.FT. (STD PLAN "CONDITIONED")
 N/A SQ.FT. (W/OPT. PORCH/RECESS "CONDITIONED")

CMH MANUFACTURING	Model #: NXT28563B	Drawing #:
	Date: 4.12.18	Scale: N.T.S. 52M027
Product Designer: FrenchB	28' x 56' LIZZIE	
GAS LINE DETAIL		



Model # 52M027 Minimum Joist Spacing 16"
 Box Width = 158" Double wide No Offset Box
 Box Length = 56 ft. 99.5" 10" MIN. IBEAM No Clerestory
 No Skylights No Origami Dormer
 No Porches No Sunken Floor
 Joist Size = #2 spf 2x6 Lags 9Mx3" No Parapet Roof

Version R13.17

Shearwall	Dist. / Hitch	Length	PLF	# of Joists	Lags	Notes
Wind Zone 1 Standard Roof (3/8" sheathing only with 15 gax 1.5" at 5"/10" oc. (197 plf) Chords: 2x4 SPF #3 Top Plate Diaphragm Construction: spliced w/ 12" glue block & 1x6 SPF Rail 96 inch sidewall						
A	0'	128"	162	2	2/1	
C	56'	128"	162	2	2/1	
Wind Zone 2 Standard Roof (3/8" sheathing only with 15 gax 1.5" at 5"/10" oc. (197 plf) Chords: 2x4 SPF #3 Top Plate Diaphragm Construction: spliced w/ 2x4 MCP & 1x6 SPF Rail spliced w/ 96 inch sidewall						
A	0'	Full	425	2	3/3	
B	40.79'	128"	425	2	4/1	
C	56'	88"	162	2	1/1	
Wind Zone 3 Standard Roof (3/8" sheathing only with 15 gax 1.5" at 5"/10" oc. (197 plf) Chords: 2x4 SPF #3 Top Plate Diaphragm Construction: spliced w/ 2x4 MCP & 1x6 SPF Rail spliced w/ 96 inch sidewall						
A	0'	Full	425	2	3/3	
B	40.79'	128"	515	2(+1)	5/2	
C	56'	108"	162	2	2/1	

Model # 52M027-OPT Minimum Joist Spacing 16"
 Box Width = 158" Double wide No Offset Box
 Box Length = 56 ft. 99.5" 10" MIN. IBEAM No Clerestory
 No Skylights No Origami Dormer
 No Porches No Sunken Floor
 Joist Size = #2 spf 2x6 Lags 9Mx3" No Parapet Roof

Version R13.17

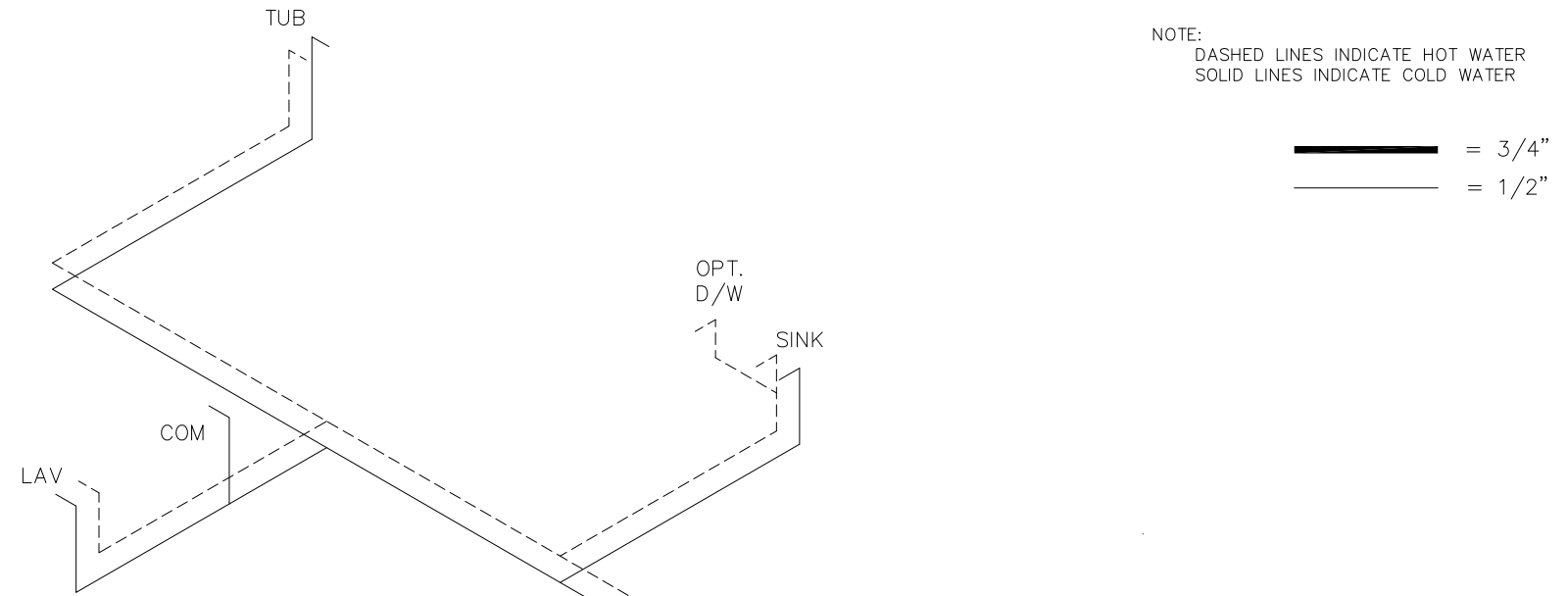
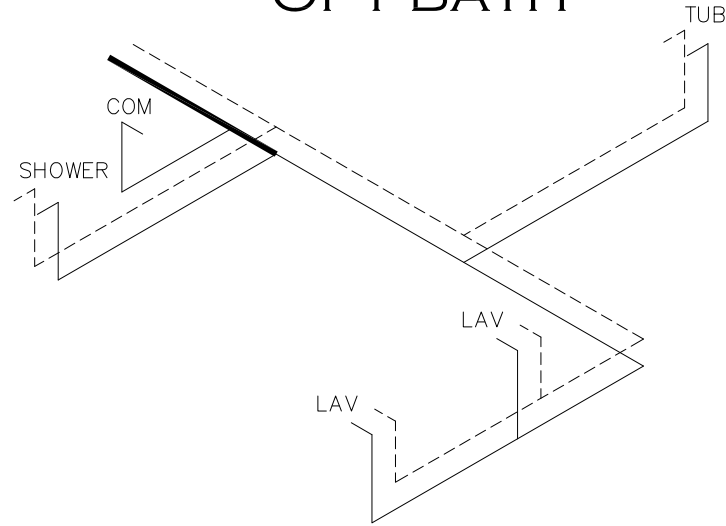
Shearwall	Dist. / Hitch	Length	PLF	# of Joists	Lags	Notes
Wind Zone 1 Standard Roof (3/8" sheathing only with 15 gax 1.5" at 5"/10" oc. (197 plf) Chords: 2x4 SPF #3 Top Plate Diaphragm Construction: spliced w/ 12" glue block & 1x6 SPF Rail 96 inch sidewall						
Aopt	0'	117.5"	425	4	4/4	Split Shearwall SW1/SW2 47.75/69.7ft
C	56'	128"	162	2	2/1	
Wind Zone 2 Standard Roof (3/8" sheathing only with 15 gax 1.5" at 5"/10" oc. (197 plf) Chords: 2x4 SPF #3 Top Plate Diaphragm Construction: spliced w/ 2x4 MCP & 1x6 SPF Rail spliced w/ 96 inch sidewall						
Aopt	0'	117.5"	425	4	4/4	Split Shearwall SW1/SW2 47.75/69.7ft
B	40.79'	128"	425	2	4/1	
C	56'	88"	162	2	1/1	
Wind Zone 3 Standard Roof (3/8" sheathing only with 15 gax 1.5" at 5"/10" oc. (197 plf) Chords: 2x4 SPF #3 Top Plate Diaphragm Construction: spliced w/ 2x4 MCP & 1x6 SPF Rail spliced w/ 96 inch sidewall						
Aopt	0'	117.5"	425	4	4/4	Split Shearwall SW1/SW2 47.75/69.7ft
B	40.79'	128"	515	2(+1)	5/2	
C	56'	108"	162	2	2/1	

APPROVED **HWG** **APPROVED**
 27 MAR 2023
 FP-28-5623
 Federal Manufactured Home Construction And Safety Standards

1,474 SQ.FT. (STD PLAN "CONDITIONED")
 N/A SQ.FT. (W/OPT. PORCH/RECESS "CONDITIONED")

CMH MANUFACTURING	Model #: NXT28563B Date: 4.12.18 Scale: N.T.S.	Drawing #: 52M027
Product Designer: FrenchB		28' x 56' LIZZIE
Shearwall Page		

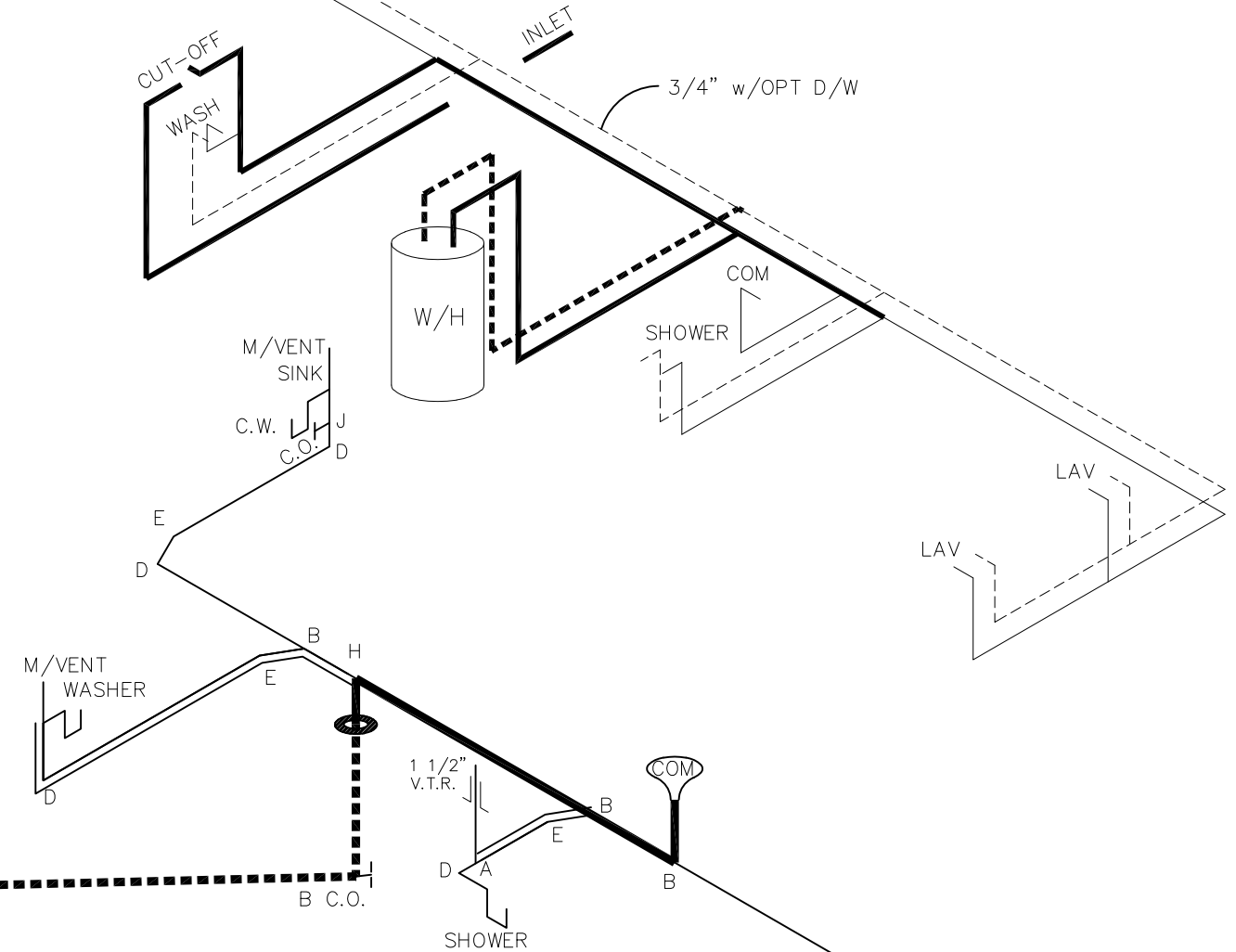
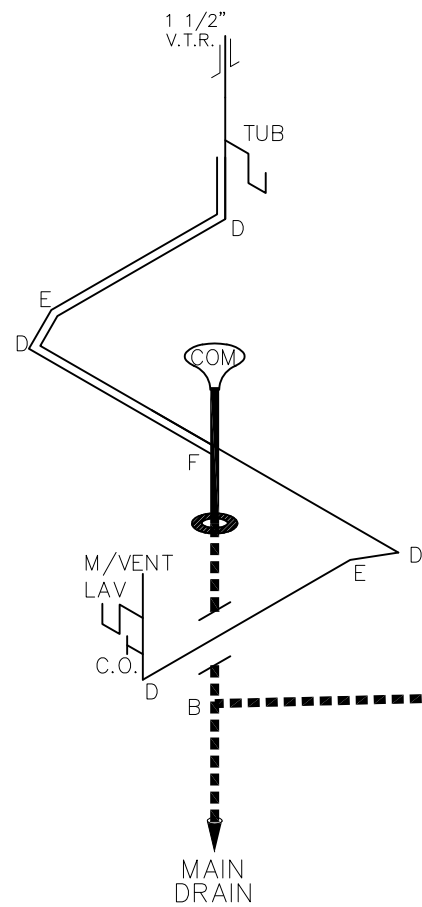
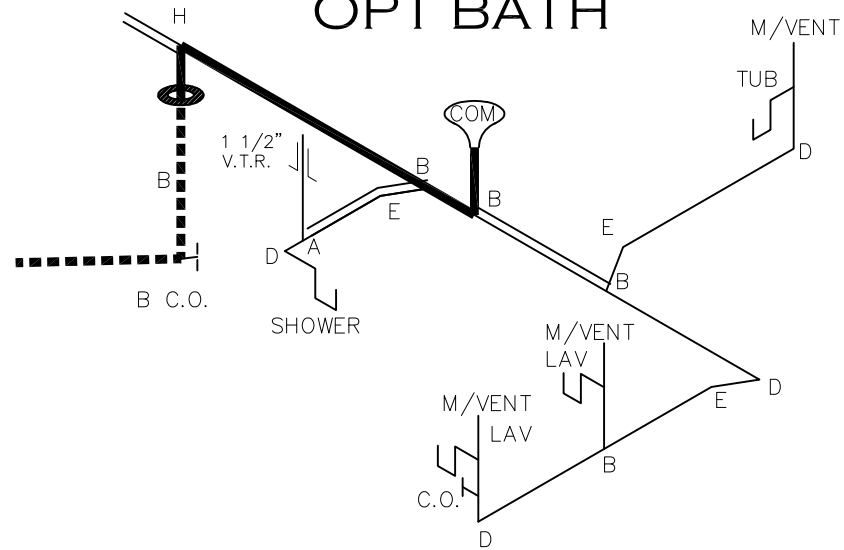
OPT BATH



NOTE:
 DASHED LINES INDICATE HOT WATER
 SOLID LINES INDICATE COLD WATER

———— = 3/4"
 ————— = 1/2"

OPT BATH



LEGEND	
A	SHORT TURN T-Y
B	LONG TURN T-Y
C	1/4 BEND
D	LONG SWEEP 1/4 BEND
E	45 ELL
F	DBL. SANITARY TEE
G	4x3 CLOSET ELL
H	DOUBLE ELL
I	22 1/2" ELL
J	45° Y
K	LONG TURN STREET ELBOW
L	45 FTG ELL

DWV LINE SIZE CHART	
————	= 3"
————	= 2"
————	= 1 1/2"

APPROVED **RWC** **APPROVED**

27 MAR 2023
 FP-28-5623
 Federal Manufactured Home Construction And Safety Standards

1,474 SQ.FT. (STD PLAN "CONDITIONED")	
N/A SQ.FT. (W/OPT. PORCH/RECESS "CONDITIONED")	
CMH MANUFACTURING	Model #: NXT20563B Date: 4.12.18 Scale: N.T.S.
Product Designer: FrenchB	Drawing #: 52M027
D.W.V. and Supply Lines	