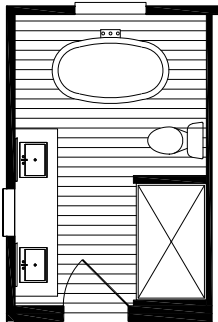
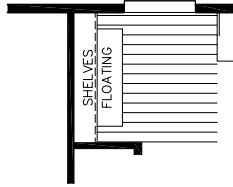
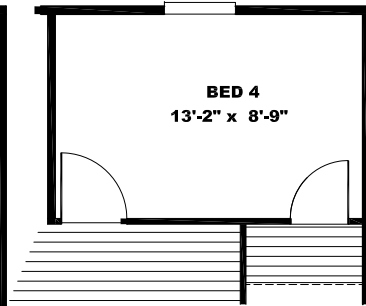
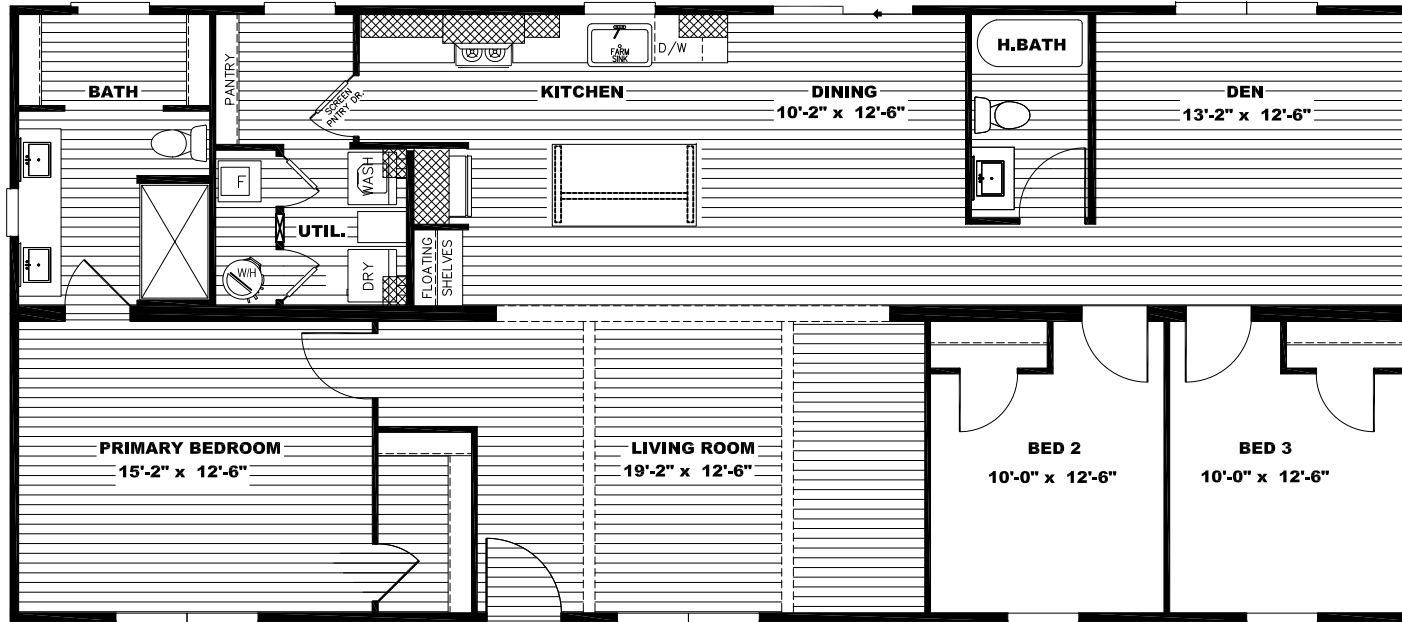


COFFEE BAR OPTION



OPT. BATH



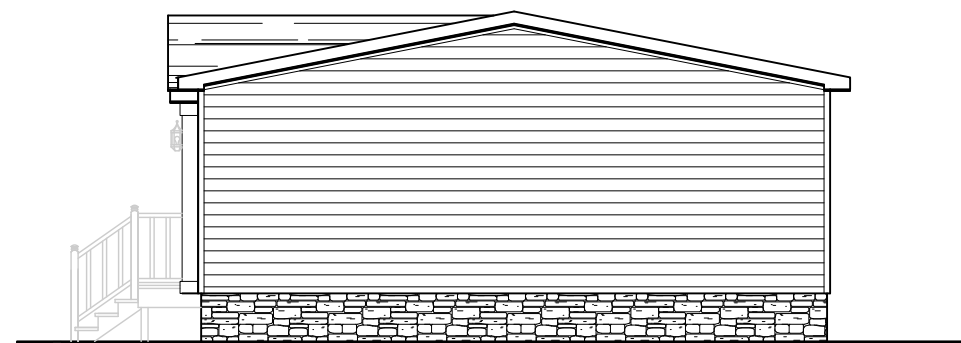
MODEL #NXT28603C

DRAWING # 52M028

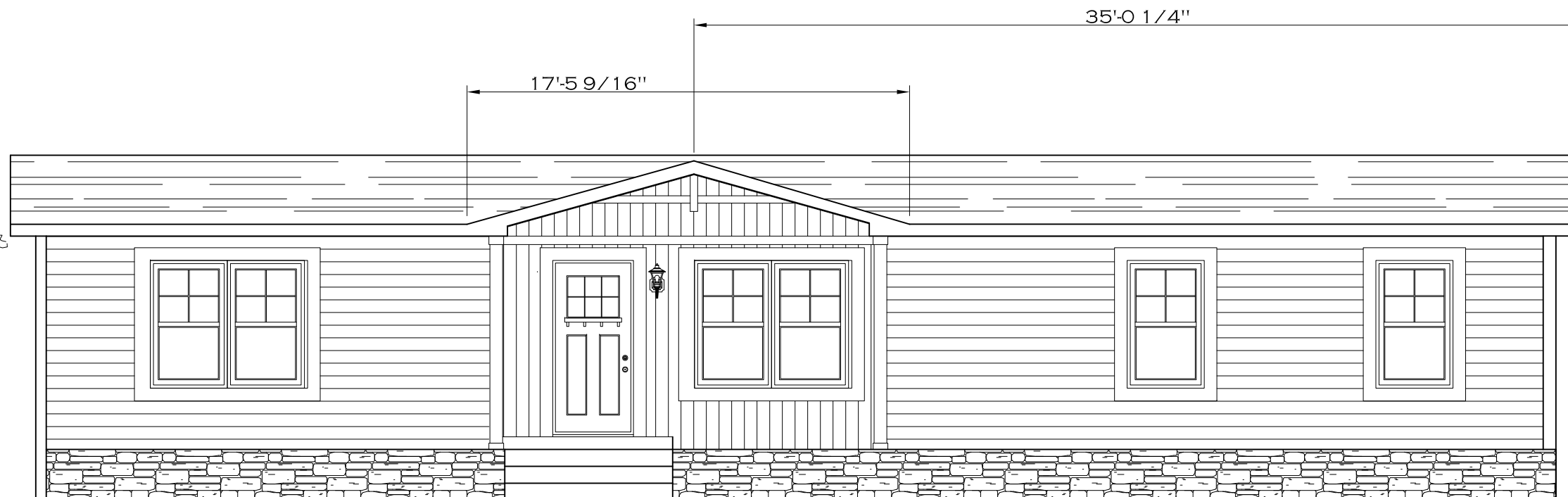
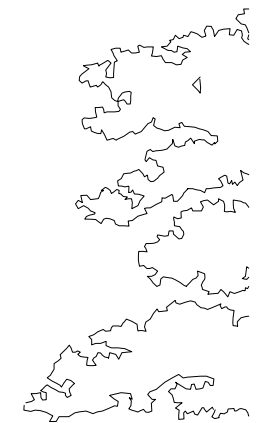
28'x60' LORALEI



LEFT SIDE ELEVATION

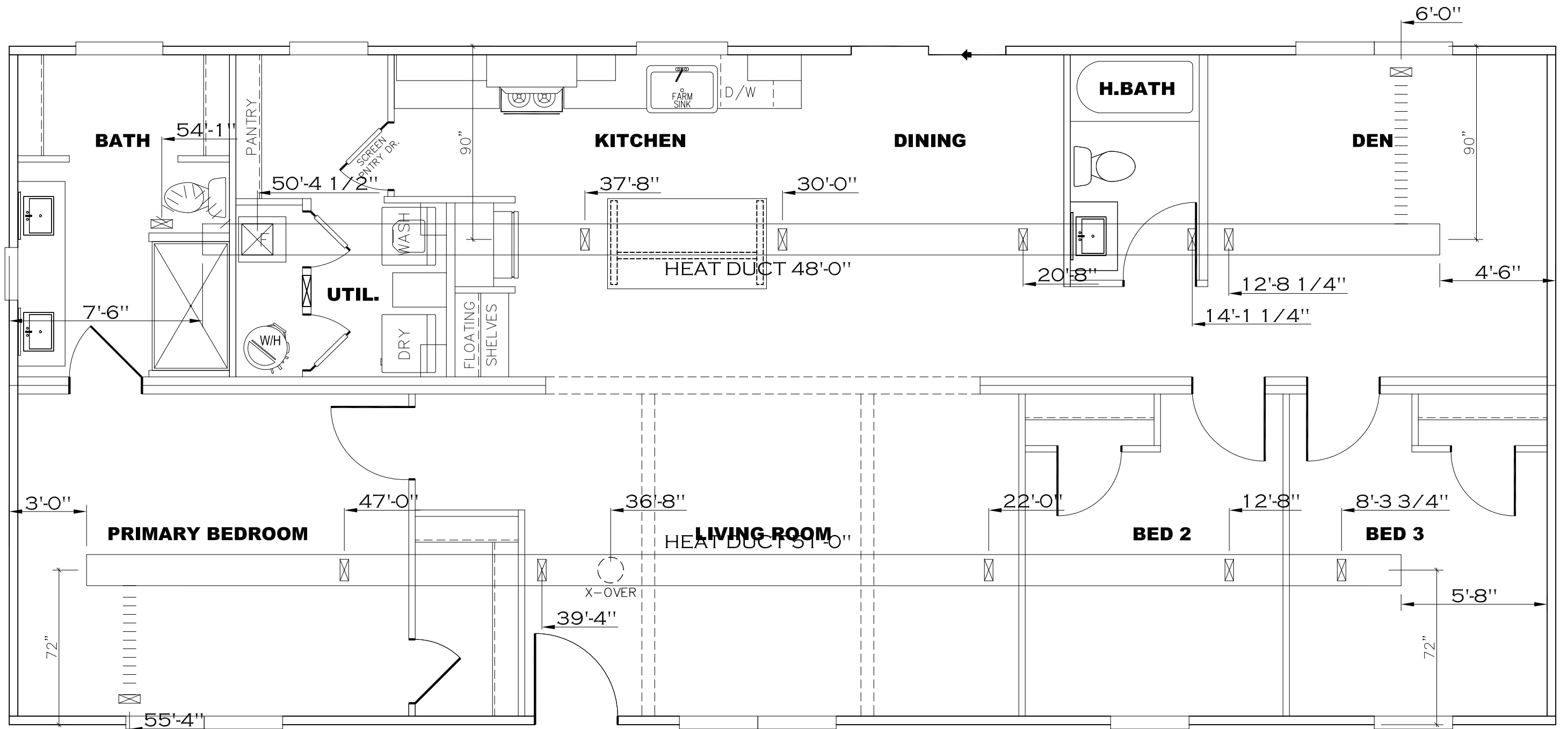


RIGHT SIDE ELEVATION



REV:-6/5/2023 9:00 PM

1,580 SQ.FT. (STD PLAN "CONDITIONED")	
N/A SQ.FT. (W/OPT. PORCH/RECESS "CONDITIONED")	
CMH MANUFACTURING	Model #: NXT28603C Date: 4.12.18 Scale: N.T.S.
Product Designer: FrenchB	Drawing #: 52M028
28' x 60' LORALEI	
ELEVATION	

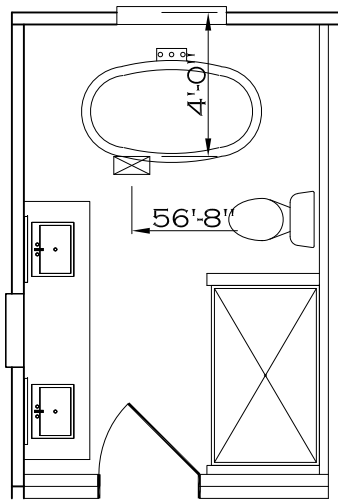


REV:-6/5/2023 9:09 PM

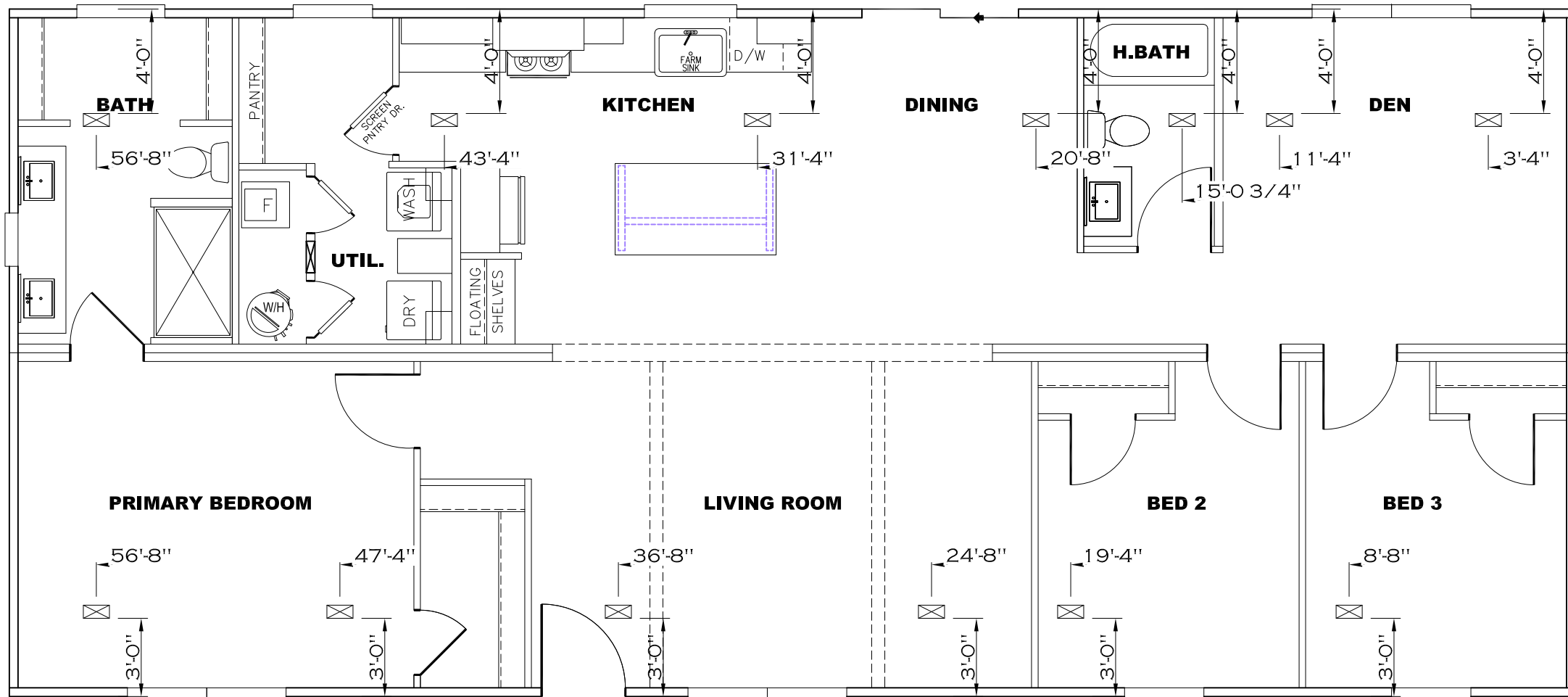
1,580 SQ.FT. (STD PLAN "CONDITIONED")
 N/A SQ.FT. (W/OPT. PORCH/RECESS "CONDITIONED")

CMH MANUFACTURING	Model #: NXT28603C	Drawing #:
	Date: 4.12.18	Scale: N.T.S. 52M028
Product Designer: FrenchB		28' x 60' LORALEI

HEAT DUCT



OPT. BATH



1,580 SQ.FT. (STD PLAN "CONDITIONED")
 N/A SQ.FT. (W/OPT. PORCH/RECESS "CONDITIONED")

CMH MANUFACTURING	Model #: NXT28603C	Drawing #:
	Date: 4.12.18	Scale: N.T.S. 52MO28
Product Designer: FrenchB		28' x 60' LORALEI

REV:-6/5/2023 8:59 PM

OVERHEAD DUCT

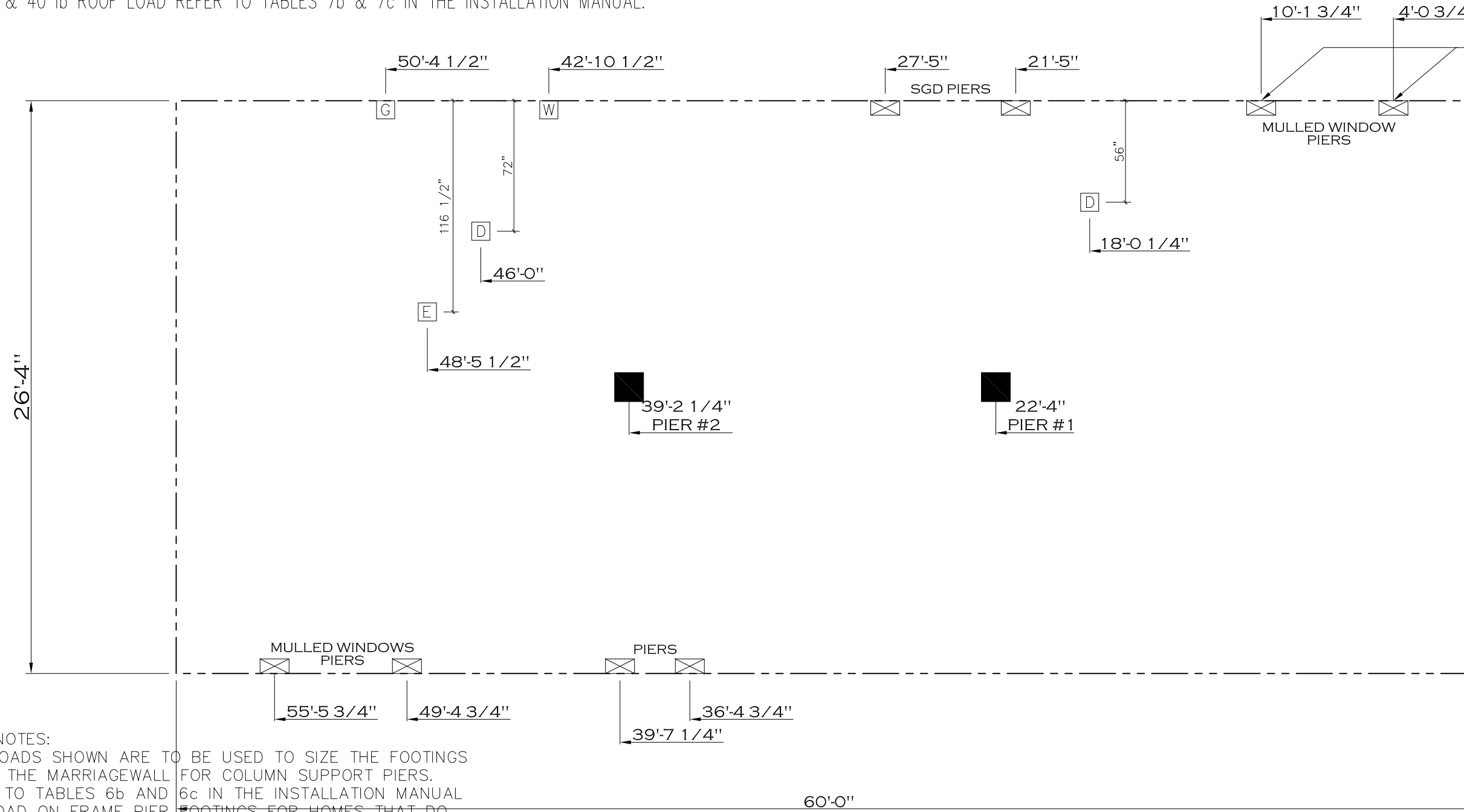
20 lb ROOF LOAD SIDEWALL OPENING PIER LOAD 28' BOX WIDTH	SIDEWALL OPENING (FT) REQUIRED PIER LOAD (LBS)					
	3	4	5	6	8	10
	1175	1330	1485	1640	1950	2260

20 psf Roof Live Load		
Column Pier #	Distance from Hitch Feet	Pier Load (lbs)
1	22	3729
2	39	3729

30 psf Roof Live Load		
Column Pier #	Distance from Hitch	Pier Load (lbs)
1	22.333	5892
2	39.188	5892

40 psf Roof Live Load		
Column Pier #	Distance from Hitch	Pier Load (lbs)
1	22.333	7264
2	39.188	7264

*FOR 30 lb & 40 lb ROOF LOAD REFER TO TABLES 7b & 7c IN THE INSTALLATION MANUAL.



*DELETE PIERS W/
BED 4 OPT

GENERAL NOTES:

- PIER LOADS SHOWN ARE TO BE USED TO SIZE THE FOOTINGS BELOW THE MARRIAGEWALL FOR COLUMN SUPPORT PIERS. REFER TO TABLES 6b AND 6c IN THE INSTALLATION MANUAL FOR LOAD ON FRAME PIER FOOTINGS FOR HOMES THAT DO NOT REQUIRE PERIMETER BLOCKING. REFER TO TABLES 7b AND 7c IN THE INSTALLATION MANUAL FOR LOAD ON FRAME PIER FOOTINGS THAT REQUIRE PERIMETER BLOCKING. REFER TO TABLES 10 AND 10a TO DETERMINE FOOTING SIZE FOR ALL PIERS.
- REFER TO TABLE 9 FOR PIER CONFIGURATION AND MAXIMUM ALLOWABLE HEIGHTS. CROSS REFERENCE THE PIER HEIGHT WITH THE MAXIMUM ALLOWABLE FLOOR HEIGHT LISTED IN THE FRAME TIEDOWN CHARTS (TABLE 18, 19, AND 20).
- FLOOR WIDTH SHOWN IS FOR STANDARD PRODUCT ONLY. CONTACT THE MFG PLANT FOR SPECIFICATIONS OF OPTIONS ORDERED.
- SERVICE DROP LOCATIONS IDENTIFIED ARE APPROXIMATE.
- THE MAXIMUM SPACING FOR FRAME SUPPORT PIERS FOR 8" I-BEAMS IS 8 FEET, 10" & 12" I-BEAMS ARE 10 FEET.

SERVICE DROP LEGEND

	= ELECTRICAL DROP
	= WATER INLET
	= DWV PLUMBING DROP
	= GAS INLET

PIER LEGEND

	= SUPPORT UNDER MATING OPENING
	= SUPPORT AT MATING COLUMN
	= SUPPORT UNDER MATING WALL
	= PIER PORCH/RECESSED ENTRY
	= PIER MAIN BEAM
	= PIER PERIMETER
	= TIE-DOWN SUPPORT (QTY PER TBL M. SEE DETAIL D-6 IN FOUND. PKG.)

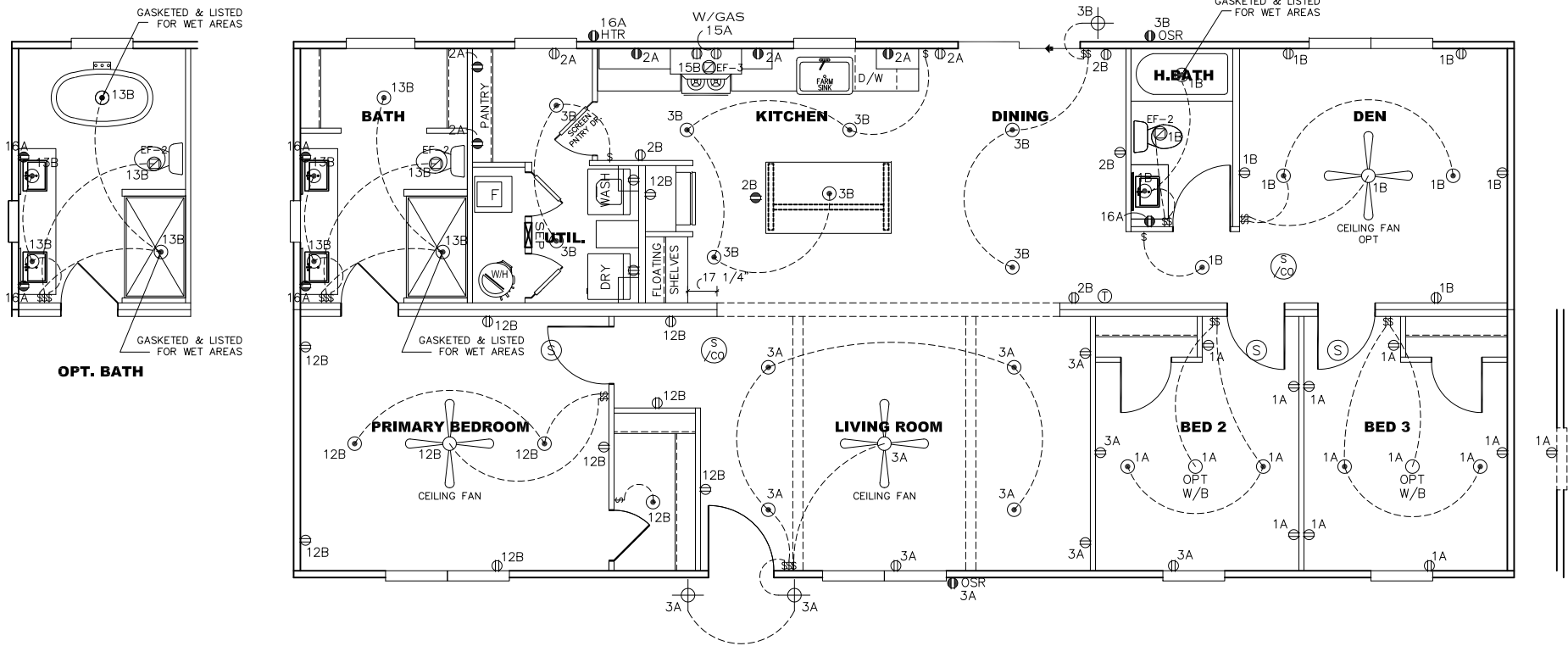
REV:-6/5/2023 9:14 PM

1,580 SQ.FT. (STD PLAN "CONDITIONED")
N/A SQ.FT. (W/OPT. PORCH/RECESS "CONDITIONED")

CMH MANUFACTURING	Model #: NXT28603C	Drawing #:
	Date: 4.12.18	Scale: N.T.S.
Product Designer: FrenchB	28' x 60' LORALEI	

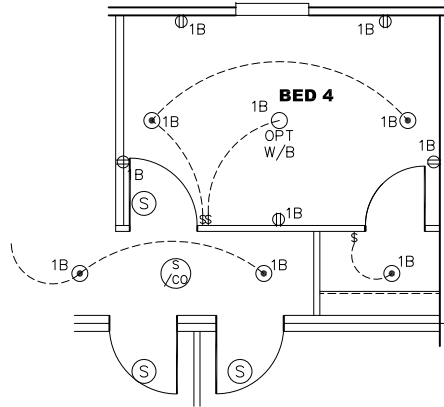
SERVICE DROPS

CIRCUIT	CIRCUIT #	WIRE	BREAKER	CIRCUIT	CIRCUIT #	WIRE	BREAKER	CIRCUIT	CIRCUIT #	WIRE	BREAKER
LIGHT/RECEP	1A,1B,3A,3B	14-2	15-SP	DRYER	5A,7B	SEE NOTE #8		BATHROOM	16A	12-2	20-SP
LIGHT/RECEP	12B,13B,14A,14B	14-2	15-SP	WATER HEATER	4A,6B	SEE NOTE #8		OPT G/DISP	9B	SEE NOTE #8	
KITCHEN	2A,2B	12-2	20-SP	RANGE	5B,7A	SEE NOTE #8		OPT SPA/WP/JAC	11A,B	SEE NOTE #8	
WASHER	12A	12-2	20-SP	FURNACE	6A,8A,B,10A,B	SEE NOTE #8		FREEZER	13A	SEE NOTE #8	
RANG HOOD/MICROWAVE	15B	SEE NOTE #8		OPT D/WASH	9A	SEE NOTE #8		OPT ELEC. FIREPLACE	16B	SEE NOTE #8	
OPT. GAS RANG	15A	SEE NOTE #8		SMOKE/CO DECT	4B	SEE NOTE #8					
				REFER	12B	SEE NOTE #8					



NOTES:

- ALL CIRCUITS SHOWN ARE FOR REFERENCE AND MAY BE CHANGED BASED ON OPTIONAL COMPONENTS INSTALLED IN THE HOME.
- REFER TO DAPIA MANUAL FOR SYMBOL CHART.
- EITHER LIGHT OR RECEPTACLE MUST CONNECT TO SWITCH.
- EF-1= 50 CFM EXHAUST FAN REQUIRED FOR THERMAL ZONE III THERMAL ZONES I & II MAY USE FAN OR WINDOW W/1.5 SQ. FT. OPENABLE GLASS.
- EF-2= 50 CFM EXHAUST FAN REQUIRED THERMAL ZONE I, II, AND III.
- EF-3= 100 CFM RANGE EXHAUST FAN, SWITCH AT HOOD.
- EF-4= WHOLE HOUSE VENTILATION REQUIREMENTS PER DAPIA MANUAL.
- REFER TO DAPIA MANUAL OR THE MFG. INSTALLATION INSTRUCTIONS FOR PROPER WIRE SIZE AND BREAKER SIZE FOR SPECIFIC APPLIANCE AND MODEL BEING INSTALLED.
- ALL SMOKE ALARMS TO BE LOCATED ON THE CEILING.
- CARBON MONOXIDE ALARMS ARE ONLY REQUIRED WHEN HOME HAS EITHER FUEL BURNING APPLIANCES, IS GARAGE READY OR IS BASEMENT READY. REFERENCE DAPIA MANUAL FOR ADDITIONAL INFORMATION.
- DIMENSIONS SHOWN ON PRINT ARE APPROXIMATE AND TO BE USED ONLY AS A GUIDELINE.

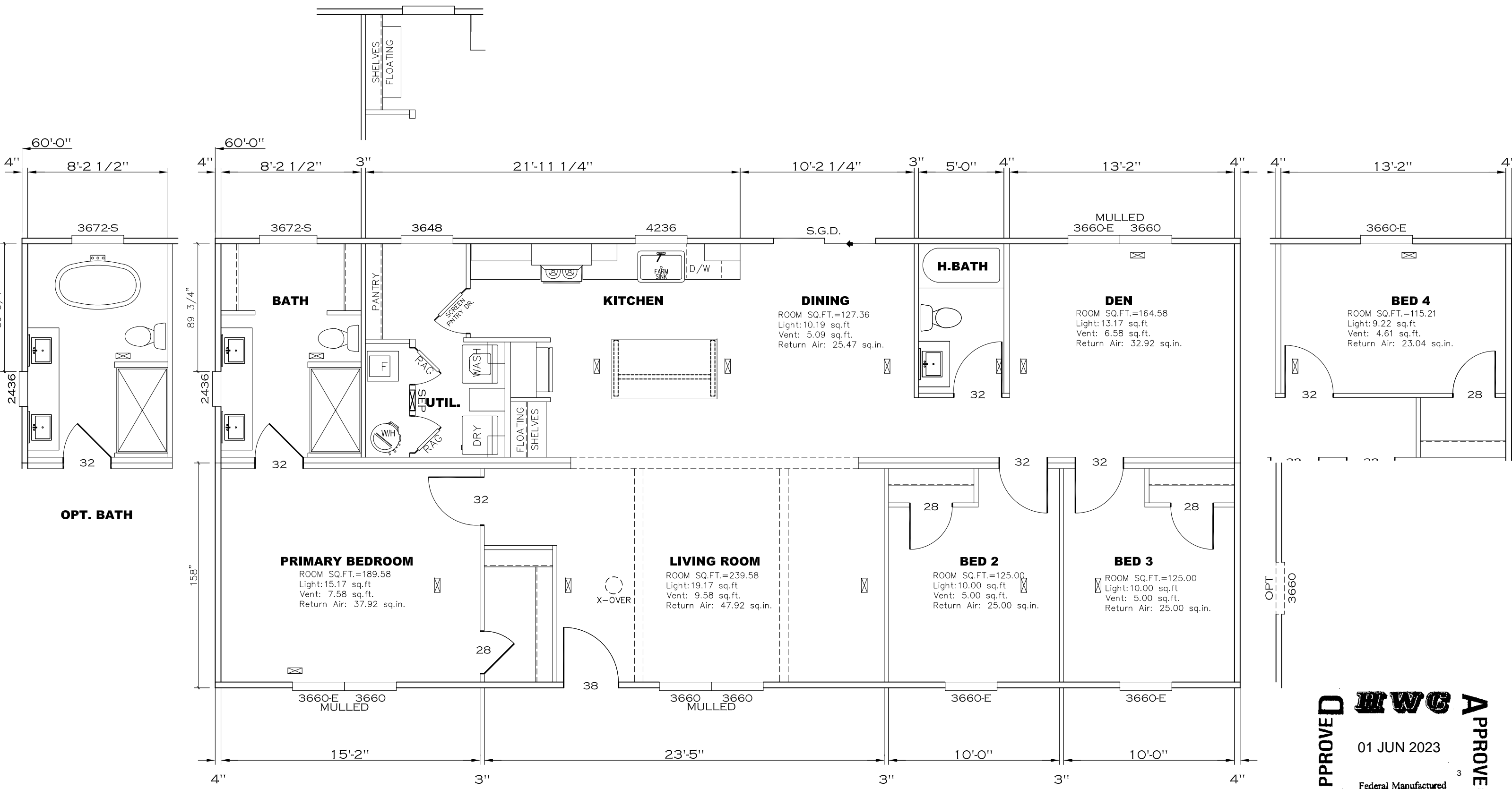


APPROVED **HWG** **APPROVED**
 01 JUN 2023
 Federal Manufactured Home Construction And Safety Standards

1,580 SQ.FT. (STD PLAN "CONDITIONED")
N/A SQ.FT. (W/OPT. PORCH/RECESS "CONDITIONED")

CMH MANUFACTURING	Model #: NXT28603C	Drawing #:
	Date: 4.12.18	Scale: N.T.S.
Product Designer: FrenchB	28' x 60' LORALEI	
ELECTRICAL PLAN		

COFFEE BAR OPTION



APPROVED **HWG** **APPROVED**

01 JUN 2023



Federal Manufactured Home Construction And Safety Standards

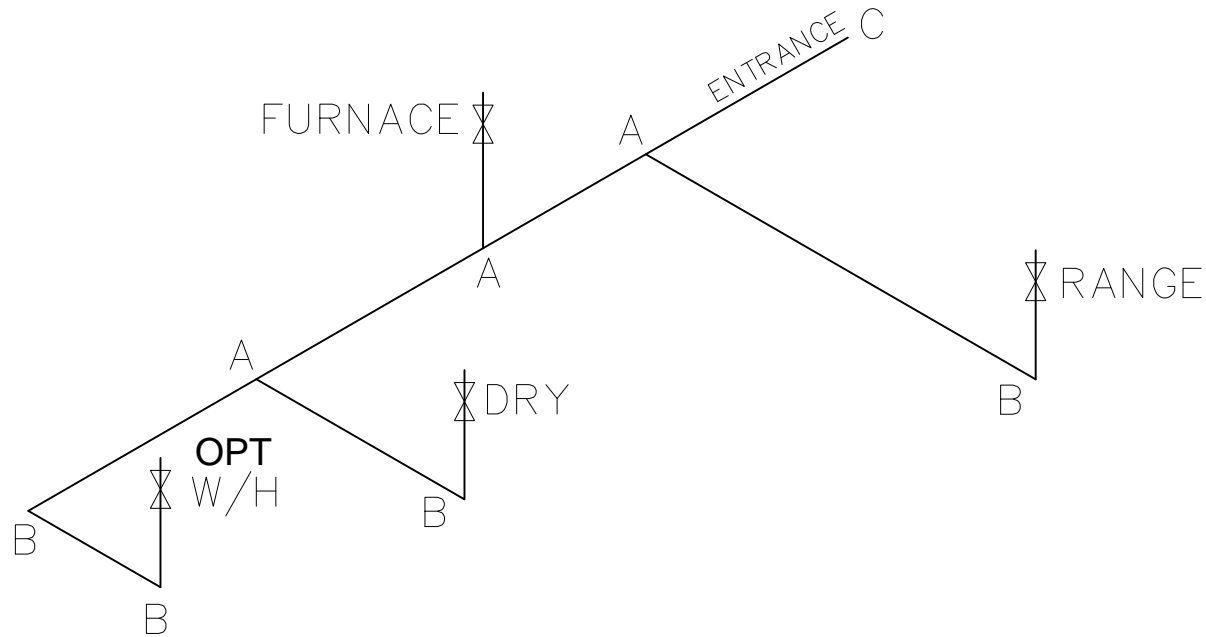
1580 SQ.FT. (STD PLAN "CONDITIONED")	
N/A SQ.FT. (W/OPT. PORCH/RECESS "CONDITIONED")	
CMH MANUFACTURING	Model #: NXT28603C Date: 5.1.23 Scale: N.T.S.
Product Designer: FrenchB	Drawing #: 52MO28
Floor Plan	

LEGEND		APPLIANCE BTU'S RATINGS MAX. INPUT	
SYM	FITTINGS		
A	TEE	FURNACE	65,000 BTU'S
B	90 ELL	W/H	37,000 BTU'S
X	VALVE	RANGE	52,000 BTU'S
C	CAP	DRYER	22,000 BTU'S

MDL=25'

GAS LINE SIZE CHART

	= 1"
	= 3/4"

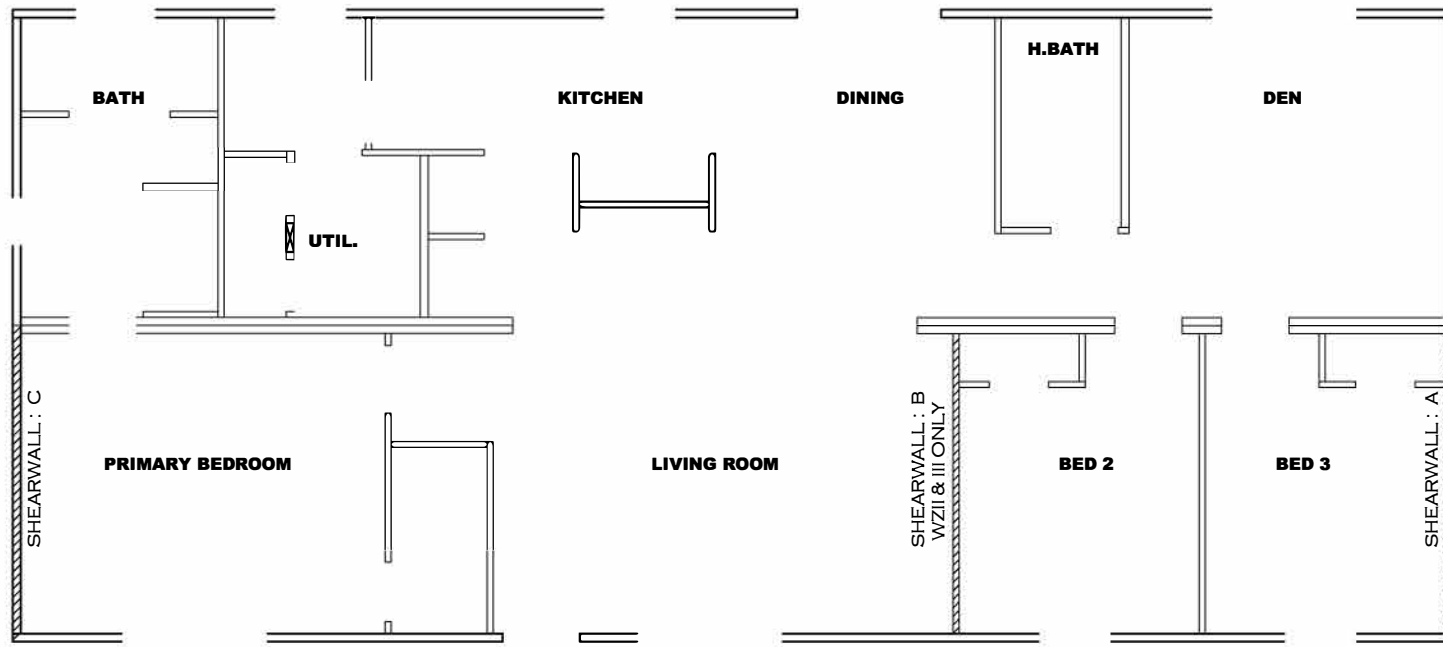


NOTES:

- 1) ALL PIPE IS 3/4" I.D.CAST (EXCEPT WHERE NOTED OTHERWISE)
- 2) MDL=MAX. DETERMINED LENGTH OF PIPE
- 3) FITTING MAY BE ADDED OR SUBTRACTED TO TRAVERSE VARIATIONS IN AXLE QUANTITY, PLACEMENT, AND FRAME TYPE.
- 4) INLET LOCATION MAY VARY TO STAY WITHIN MAX. DETERMINED LENGTH

APPROVED **HWG** **APPROVED**
 01 JUN 2023
 Federal Manufactured
 Home Construction
 And Safety Standards

1,580 SQ.FT. (STD PLAN "CONDITIONED")	
N/A SQ.FT. (W/OPT. PORCH/RECESS "CONDITIONED")	
CMH MANUFACTURING	Model #: NXT28603C Date: 4.12.18 Scale: N.T.S.
Product Designer: FrenchB	Drawing #: 52MO28
28' x 60' LORALEI	
GAS LINE DETAIL	



Model # 52M028 Minimum Joist Spacing 16 "

Box Width = 158 " Double wide No Offset Box

Box Length = 60 ft. 99.5" 10" MIN.IBEAM No Clerestory

No Skylights No Origami Dormer

No Porches No Sunken Floor

Joist Size = #2 spf 2x6 Lags 9Mx3" No Parapet Roof

Version R13.17

Wind Zone 1 Standard Roof (197 plf) Chords: 2x4 SPF #3 Top Plate spliced w/ 12" glue block & 1x6 SPF Rail spliced w/ 2x4 MCP. 96 inch sidewall

Diaphragm Construction:

Shearwall	Dist./ Hitch	Length	PLF	# of Joists	Lags	Notes
A	0'	136"	162	2	2/1	
C	60'	136"	162	2	2/1	

Wind Zone 2 Standard Roof (197 plf) Chords: 2x4 SPF #3 Top Plate spliced w/ 2x4 MCP & 1x6 SPF Rail spliced w/ 12" glue block. 96 inch sidewall

Diaphragm Construction:

Shearwall	Dist./ Hitch	Length	PLF	# of Joists	Lags	Notes
A	0'	120"	162	2	2/1	
B	20.71'	Full	425	2	2/2	
C	60'	Full	425	2	3/3	

Wind Zone 3 Standard Roof (197 plf) Chords: 2x4 SPF #3 Top Plate spliced w/ 2x4 MCP & 1x6 SPF Rail spliced w/ 12" glue block. 96 inch sidewall

Diaphragm Construction:

Shearwall	Dist./ Hitch	Length	PLF	# of Joists	Lags	Notes
A	0'	148"	162	2	2/1	
B	20.71'	Full	515	2	3/3	
C	60'	Full	425	2	3/3	

APPROVED

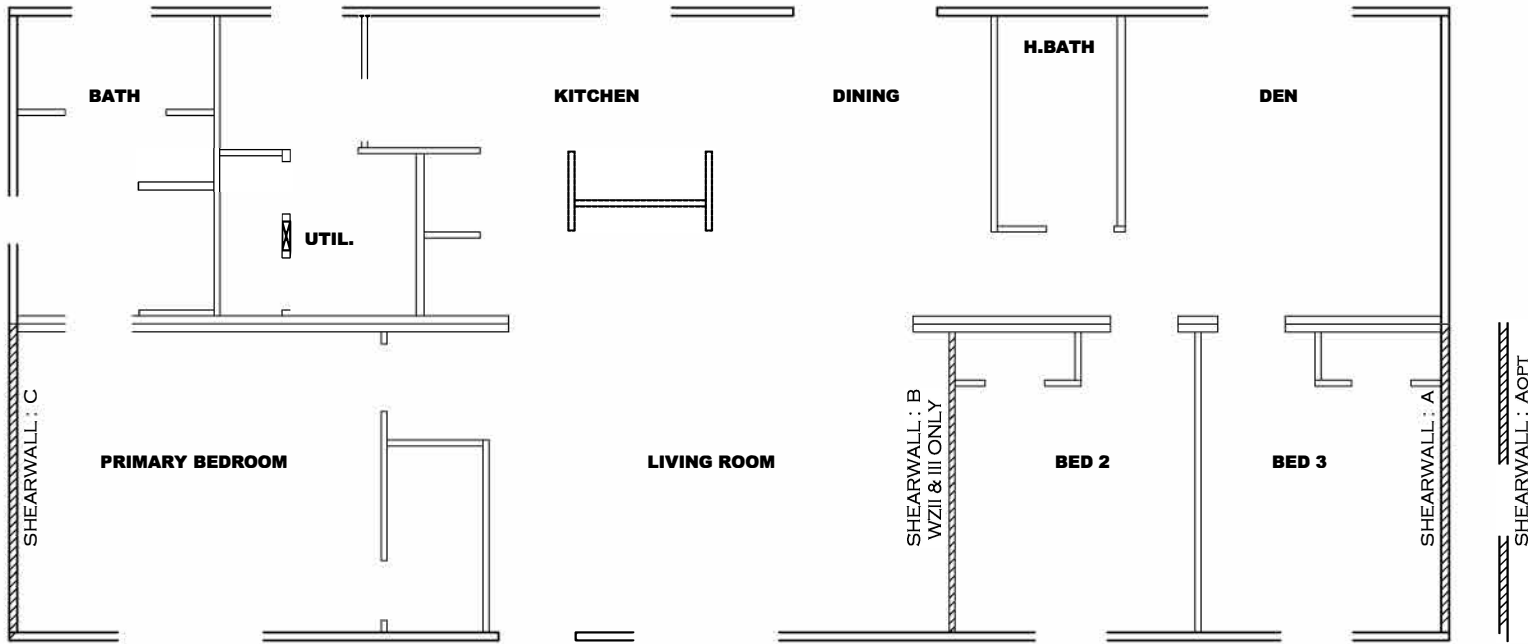
HWG

APPROVED

01 JUN 2023

Federal Manufactured Home Construction And Safety Standards

1,580 SQ.FT. (STD PLAN "CONDITIONED")	
N/A SQ.FT. (W/OPT. PORCH/RECESS "CONDITIONED")	
CMH MANUFACTURING	Model #: NXT28603C Date: 4.12.18 Scale: N.T.S.
Product Designer: FrenchB	Drawing #: 52M028
28' x 60' LORALEI	



Model # 52M028-OPT Minimum Joist Spacing 16 "

Box Width = 158 " Double wide No Offset Box
 Box Length = 60 ft. 99.5" 10" MIN. IBEAM No Clerestory
 No Skylights No Origami Dormer
 No Porches No Sunken Floor
 Joist Size = #2 spf 2x6 Lags 9Mx3" No Parapet Roof

Version R13.17

Wind Zone 1 Standard Roof		(197 plf) Chords: 2x4 SPF #3 Top Plate spliced w/ 12" glue block & 1x6 SPF Rail spliced w/ 2x4 MCP.					96 inch sidewall
Diaphragm Construction:							
Shearwall	Dist./ Hitch	Length	PLF	# of Joists	Lags	Notes	SW1/SW2
Aopt	0'	117.5"	425	4	4/4	Split Shearwall	47.75/69.7¢
C	60'	136"	162	2	2/1		
Wind Zone 2 Standard Roof		(197 plf) Chords: 2x4 SPF #3 Top Plate spliced w/ 2x4 MCP & 1x6 SPF Rail spliced w/ 12" glue block.					96 inch sidewall
Diaphragm Construction:							
Shearwall	Dist./ Hitch	Length	PLF	# of Joists	Lags	Notes	SW1/SW2
Aopt	0'	117.5"	425	4	4/4	Split Shearwall	47.75/69.7¢
B	20.71'	Full	425	2	2/2		
C	60'	Full	425	2	3/3		
Wind Zone 3 Standard Roof		(197 plf) Chords: 2x4 SPF #3 Top Plate spliced w/ 2x4 MCP & 1x6 SPF Rail spliced w/ 12" glue block.					96 inch sidewall
Diaphragm Construction:							
Shearwall	Dist./ Hitch	Length	PLF	# of Joists	Lags	Notes	SW1/SW2
Aopt	0'	117.5"	425	4	4/4	Split Shearwall	47.75/69.7¢
B	20.71'	Full	515	2	3/3		
C	60'	Full	425	2	3/3		

APPROVED

HWG

APPROVED

01 JUN 2023

3

Federal Manufactured Home Construction And Safety Standards

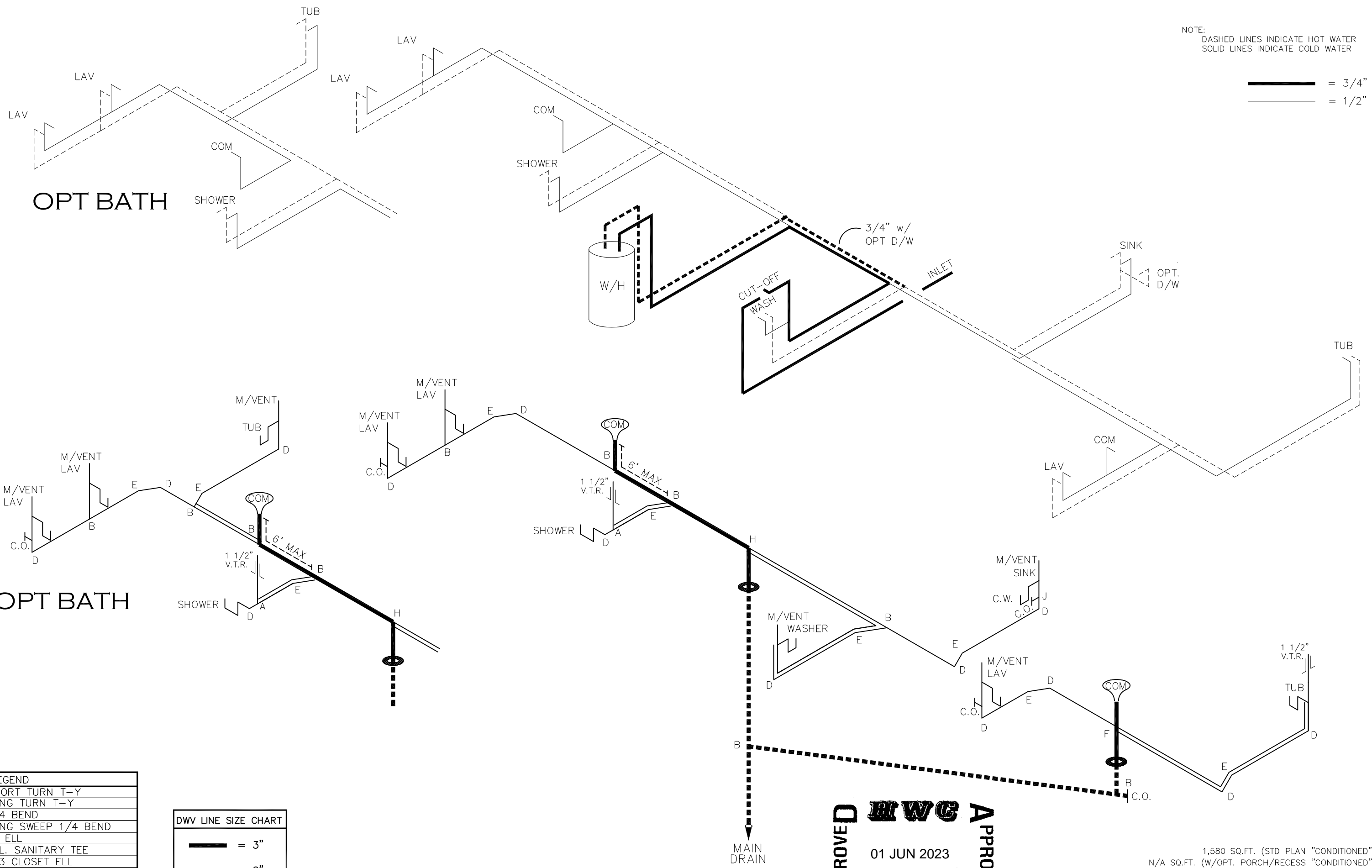
1,580 SQ.FT. (STD PLAN "CONDITIONED")
 N/A SQ.FT. (W/OPT. PORCH/RECESS "CONDITIONED")

CMH MANUFACTURING	Mod e#: NX T2B603C	Drawing #:
	Date: 4.12.18	Scale: N.T.S. 52M028
Product Designer: FrenchB		28' x 60' LORALEI

Opt Shearwall Page

NOTE:
DASHED LINES INDICATE HOT WATER
SOLID LINES INDICATE COLD WATER

— = 3/4"
— = 1/2"



OPT BATH

OPT BATH

LEGEND	
A	SHORT TURN T-Y
B	LONG TURN T-Y
C	1/4 BEND
D	LONG SWEEP 1/4 BEND
E	45 ELL
F	DBL. SANITARY TEE
G	4x3 CLOSET ELL
H	DOUBLE ELL
I	22 1/2° ELL
J	45° Y
K	LONG TURN STREET ELBOW
L	45 FTG ELL

DWV LINE SIZE CHART	
— (thick)	= 3"
— (medium)	= 2"
— (thin)	= 1 1/2"

APPROVED **HWG** **APPROVED**
01 JUN 2023
Federal Manufactured Home Construction And Safety Standards

1,580 SQ.FT. (STD PLAN "CONDITIONED")		N/A SQ.FT. (W/OPT. PORCH/RECESS "CONDITIONED")	
CMH MANUFACTURING	Model #: NKT28603C	Date: 4.12.18	Scale: N.T.S.
Product Designer: FrenchB	28' x 60' LORALEI		
D.W.V. and Supply Lines			