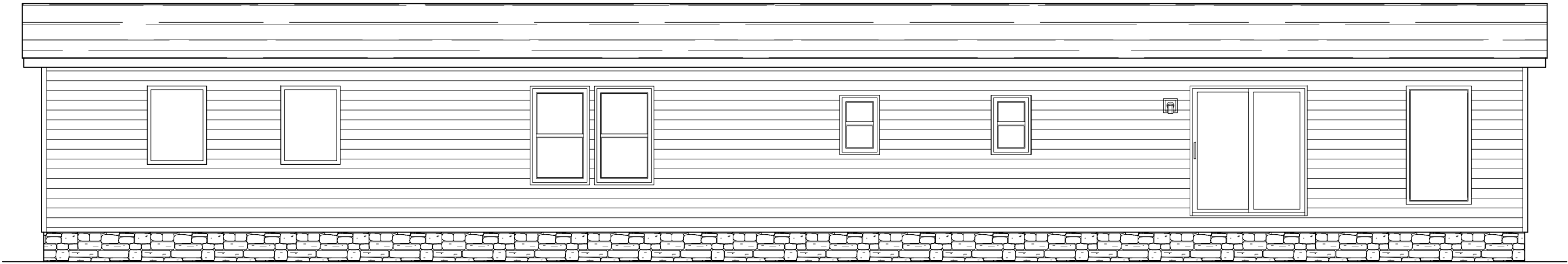


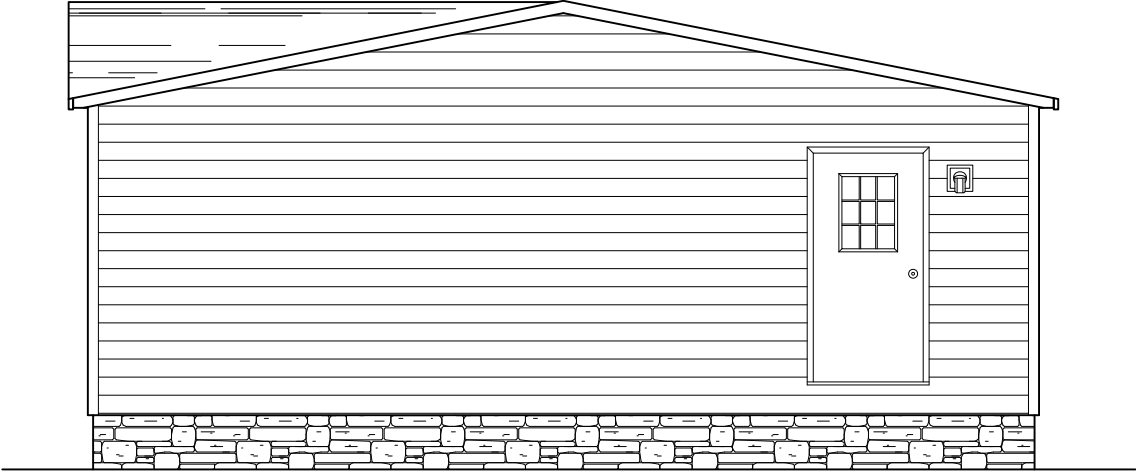
MODEL #NXI28764A
 DRAWING # 52M003
 28' x 76' NELLIE



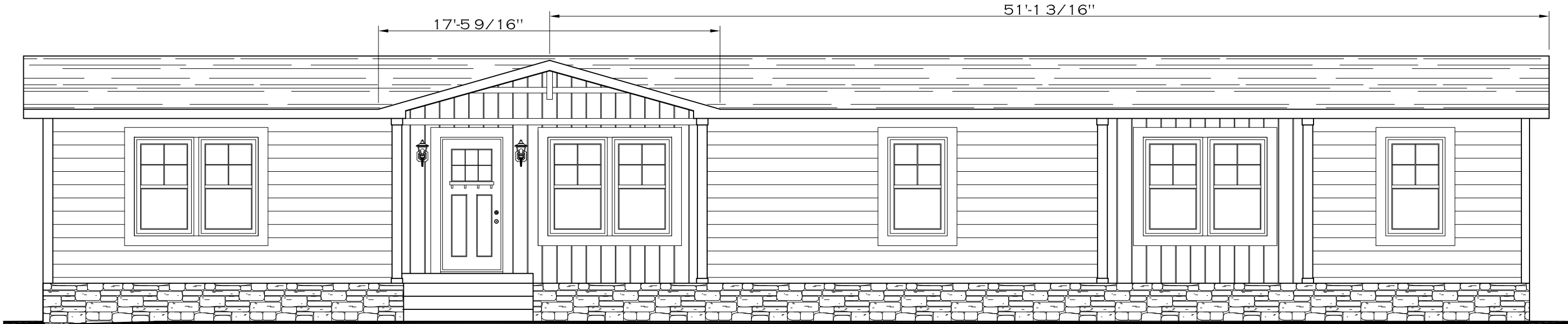
REAR ELEVATION



LEFT SIDE ELEVATION

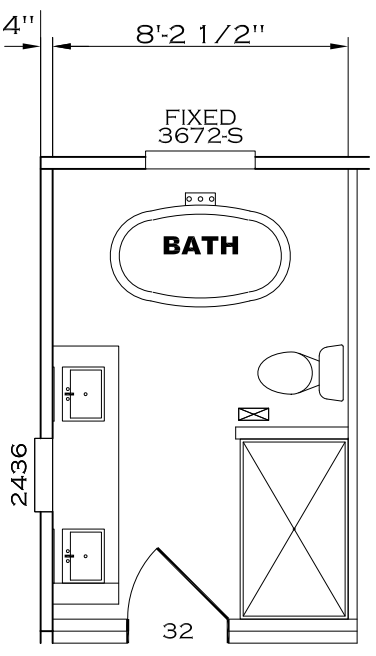
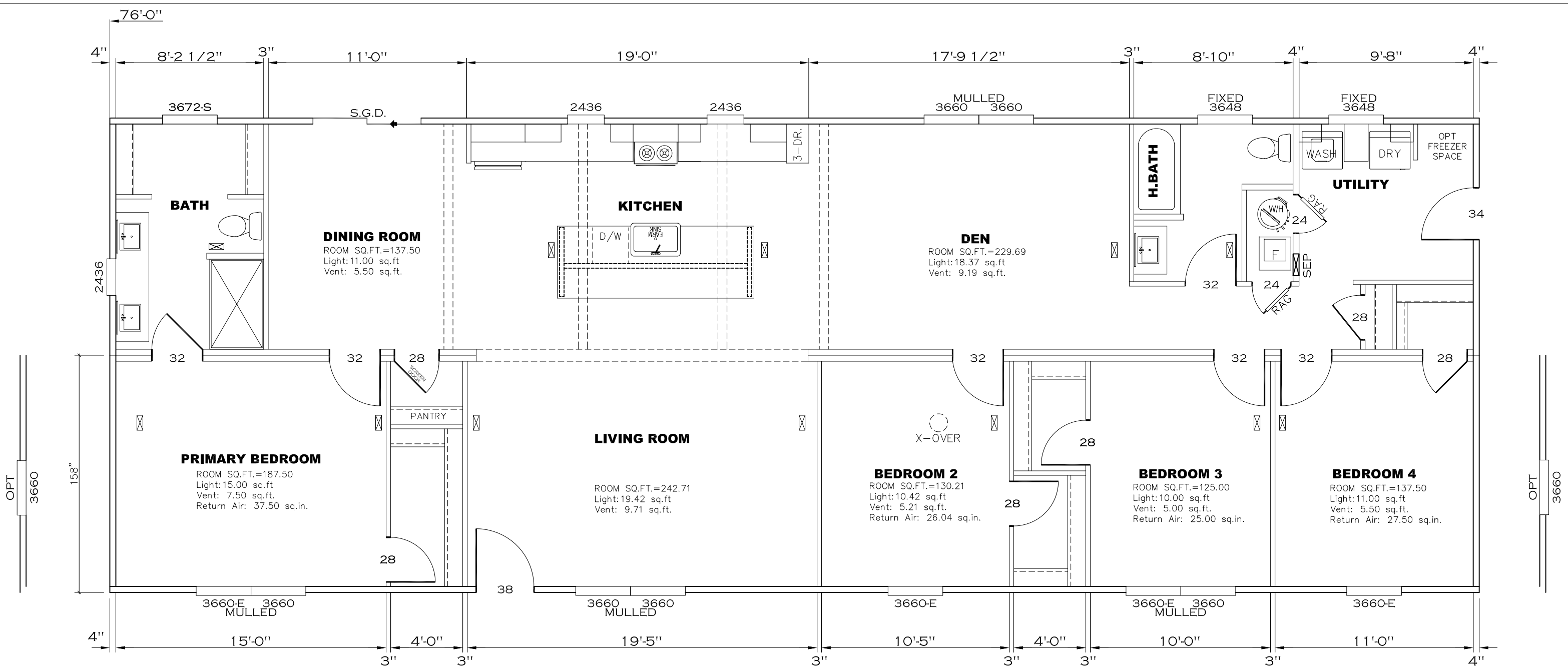


RIGHT SIDE ELEVATION



REV:-1 1/29/2022 8:27 AM

N/A		2,001 SQ.FT. (STD PLAN "CONDITIONED")	
CMH MANUFACTURING Product Designer: BF	Model #: NX128764A	Drawing #:	
	Date: 1/29/22	Scale: N.T.S.	52M003
ELEVATION		28' x 76' NXT	



APPROVED **BW** **APPROVED**

REVISED
16 MAY 2023
FP-28-5118
Federal Manufactured
Home Construction
And Safety Standards

2001 SQ.FT. (STD PLAN "CONDITIONED")	
N/A SQ.FT. (W/OPT. PORCH/RECESS "CONDITIONED")	
CMH MANUFACTURING	Model #: NX128764A Date: 8/4/18 Scale: NTS Drawing #: 52M003
Product Designer: BF	28' x 76' NXT
FLOOR PLAN	

20 lb ROOF LOAD SIDEWALL OPENING PIER LOAD 14' BOX WIDTH	SIDEWALL OPENING (FT) REQUIRED PIER LOAD (LBS)					
	3	4	5	6	8	10
	1175	1330	1485	1640	1950	2260

*FOR 30 lb & 40 lb ROOF LOAD REFER TO TABLES 7 & 7a IN THE INSTALLATION MANUAL.

20 psf Roof Live Load		
Column Pier #	Distance from Hitch	Pier Load (lbs)
1	36.75	3445
2	52.17	3445

30 psf Roof Live Load		
Column Pier #	Distance from Hitch	Pier Load (lbs)
1	36.75	5514
2	52.17	5514

40 psf Roof Live Load		
Column Pier #	Distance from Hitch	Pier Load (lbs)
1	36.75	6792
2	52.17	6792



GENERAL NOTES:

- PIER LOADS SHOWN ARE TO BE USED TO SIZE THE FOOTINGS BELOW THE MARRIAGEWALL FOR COLUMN SUPPORT PIERS. REFER TO TABLES 6b AND 6c IN THE INSTALLATION MANUAL FOR LOAD ON FRAME PIER FOOTINGS FOR HOMES THAT DO NOT REQUIRE PERIMETER BLOCKING. REFER TO TABLES 7b AND 7c IN THE INSTALLATION MANUAL FOR LOAD ON FRAME PIER FOOTINGS THAT REQUIRE PERIMETER BLOCKING. REFER TO TABLES 10 AND 10a TO DETERMINE FOOTING SIZE FOR ALL PIERS.
- REFER TO TABLE 9 FOR PIER CONFIGURATION AND MAXIMUM ALLOWABLE HEIGHTS. CROSS REFERENCE THE PIER HEIGHT WITH THE MAXIMUM ALLOWABLE FLOOR HEIGHT LISTED IN THE FRAME TIEDOWN CHARTS (TABLE 18, 19, AND 20).
- FLOOR WIDTH SHOWN IS FOR STANDARD PRODUCT ONLY. CONTACT THE MFG PLANT FOR SPECIFICATIONS OF OPTIONS ORDERED.
- SERVICE DROP LOCATIONS IDENTIFIED ARE APPROXIMATE.
- THE MAXIMUM SPACING FOR FRAME SUPPORT PIERS FOR 8" I-BEAMS IS 8 FEET, 10" & 12" I-BEAMS ARE 10 FEET.

SERVICE DROP LEGEND

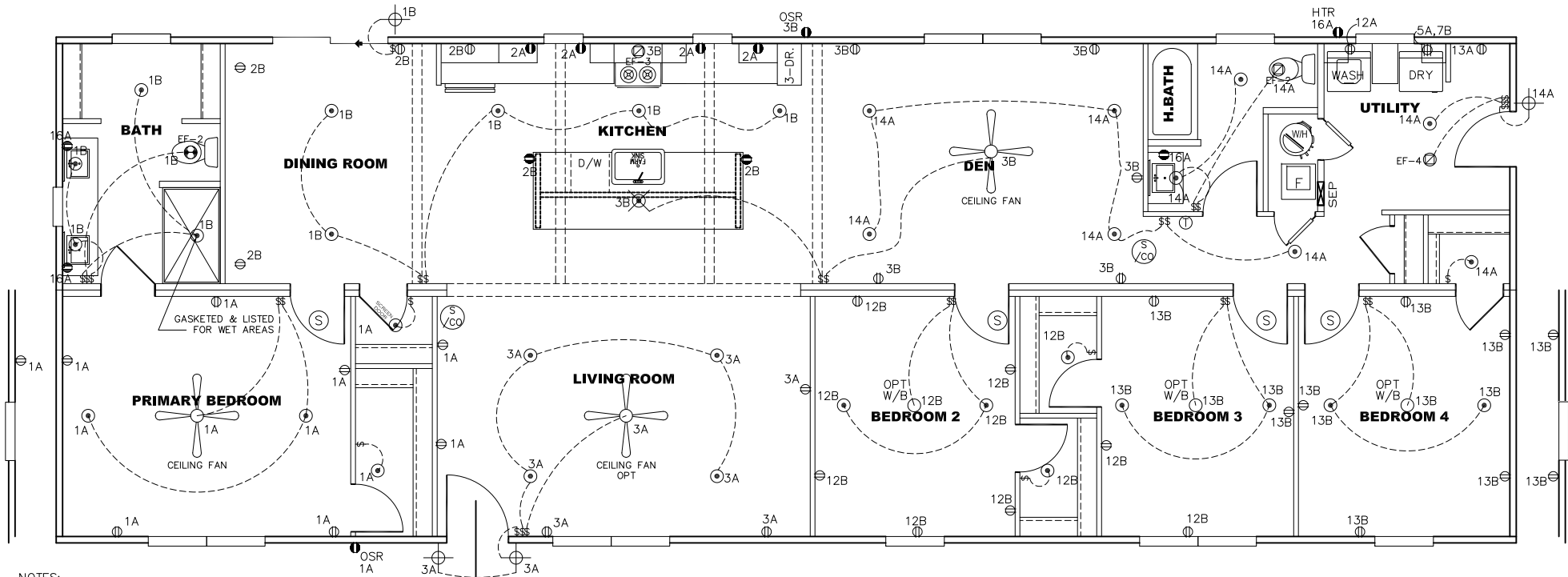
- E = ELECTRICAL DROP
- W = WATER INLET
- D = DWV PLUMBING DROP
- G = GAS INLET

2,001 SQ.FT. (STD PLAN "CONDITIONED")

N/A		
CMH MANUFACTURING	Model #: NX128764A Date: 1/29/22 Scale: N.T.S.	Drawing #: 52MO03
Product Designer: BF	28' x 76' NXT	
SERVICE DROPS		

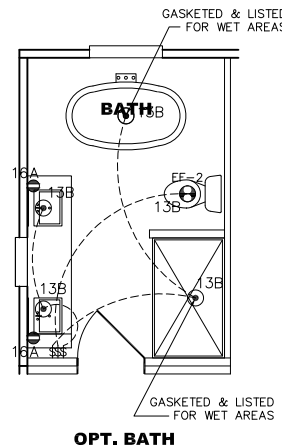
REV:-1 1/29/2022 9:37 AM

CIRCUIT	CIRCUIT #	WIRE	BREAKER	CIRCUIT	CIRCUIT #	WIRE	BREAKER	CIRCUIT	CIRCUIT #	WIRE	BREAKER
LIGHT/RECEP	1A,1B,3A,3B,12B,13B,14A	14-2	15-SP	WATER HEATER	4A,6B	SEE NOTE #8		BATHROOM	16A	12-2	20-SP
KITCHEN	2A,2B	12-2	20-SP	RANGE	5B,7A	SEE NOTE #8		OPT G/DISP	9B	SEE NOTE #8	
WASHER	12A	12-2	20-SP	FURNACE	6A,8A,B,10A,B	SEE NOTE #8		OPT SPA/ WP/JAC	11A,B	SEE NOTE #8	
DRYER	5A,7B	SEE NOTE #8		OPT D/WASH	9A	SEE NOTE #8		FREEZER	13A	SEE NOTE #8	
				SMOKE DECT.	4B	SEE NOTE #8					



NOTES:

- ALL CIRCUITS SHOWN ARE FOR REFERENCE AND MAY BE CHANGED BASED ON OPTIONAL COMPONENTS INSTALLED IN THE HOME.
- REFER TO DAPIA MANUAL FOR SYMBOL CHART.
- EITHER LIGHT OR RECEPTACLE MUST CONNECT TO SWITCH.
- EF-1= 50 CFM EXHAUST FAN REQUIRED FOR THERMAL ZONE III THERMAL ZONES I & II MAY USE FAN OR WINDOW W/1.5 SQ. FT. OPENABLE GLASS.
- EF-2= 50 CFM EXHAUST FAN REQUIRED THERMAL ZONE I, II, AND III.
- EF-3= 100 CFM RANGE EXHAUST FAN, SWITCH AT HOOD.
- EF-4= WHOLE HOUSE VENTILATION REQUIREMENTS PER DAPIA MANUAL.
- REFER TO DAPIA MANUAL OR THE MFG. INSTALLATION INSTRUCTIONS FOR PROPER WIRE SIZE AND BREAKER SIZE FOR SPECIFIC APPLIANCE AND MODEL BEING INSTALLED.
- ALL SMOKE ALARMS TO BE LOCATED ON THE CEILING.
- CARBON MONOXIDE ALARMS ARE ONLY REQUIRED WHEN HOME HAS EITHER FUEL BURNING APPLIANCES, IS GARAGE READY OR IS BASEMENT READY. REFERENCE DAPIA MANUAL FOR ADDITIONAL INFORMATION.
- DIMENSIONS SHOWN ON PRINT ARE APPROXIMATE AND TO BE USED ONLY AS A GUIDELINE.

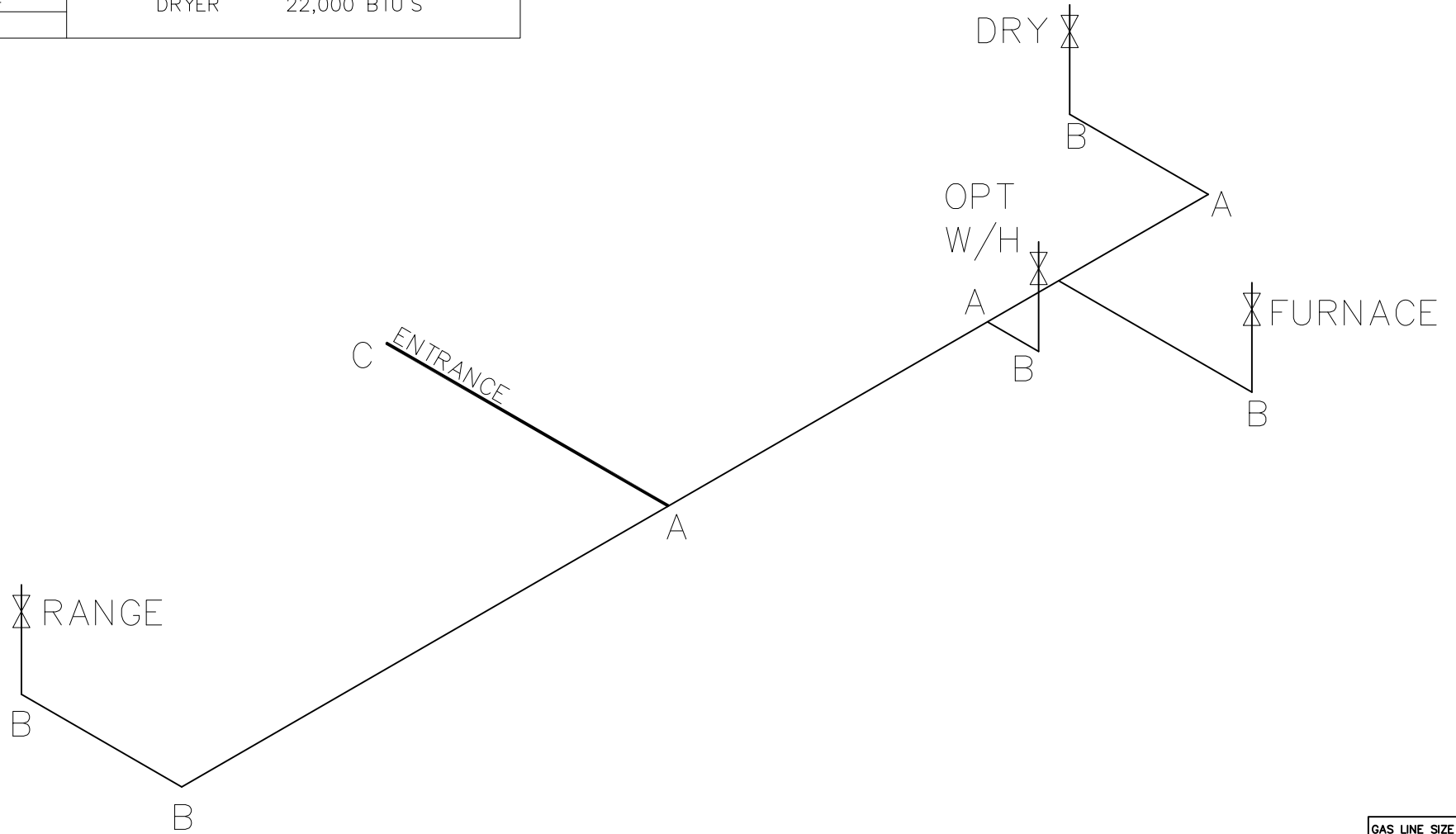


APPROVED **HWC** **APPROVED**
 REVISED
 16 MAY 2023
 FP-28-5118
 Federal Manufactured
 Home Construction
 And Safety Standards

2001 SQ.FT. (STD PLAN "CONDITIONED")		N/A SQ.FT. (W/OPT. PORCH/RECESS "CONDITIONED")	
CMH MANUFACTURING	Model #: NX128764A	Date: 04/18	Scale: NTS
Product Designer: BF	Drawing #: 52M003		
28' x 76' NXT			
ELECTRICAL PLAN-06			

LEGEND		APPLIANCE BTU'S RATINGS MAX. INPUT	
SYM	FITTINGS		
A	TEE	FURNACE	65,000 BTU'S
B	90 ELL	W/H	37,000 BTU'S
X	VALVE	RANGE	52,000 BTU'S
C	CAP	DRYER	22,000 BTU'S

MDL=35'



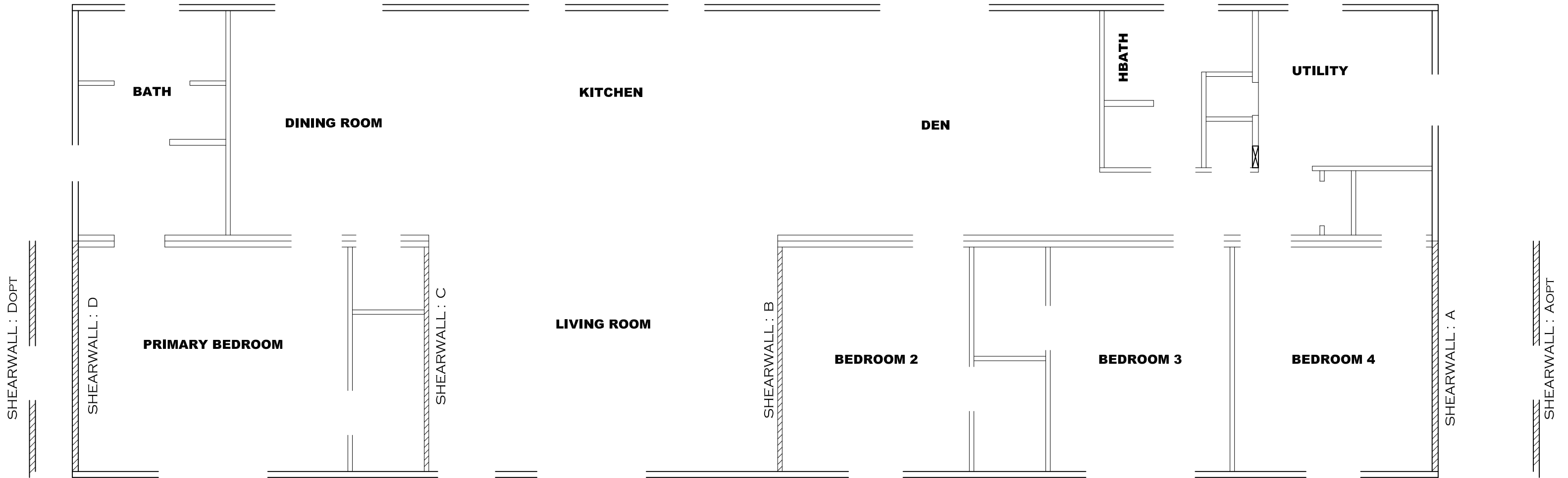
NOTES:

- 1) ALL PIPE IS 3/4" I.D.CAST (EXCEPT WHERE NOTED OTHERWISE)
- 2) MDL=MAX. DETERMINED LENGTH OF PIPE
- 3) FITTING MAY BE ADDED OR SUBTRACTED TO TRAVERSE VARIATIONS IN AXLE QUANTITY, PLACEMENT, AND FRAME TYPE.
- 4) INLET LOCATION MAY VARY TO STAY WITHIN MAX. DETERMINED LENGTH

APPROVED **HWC** **APPROVED**
 REVISED
 16 MAY 2023
 FP-28-5118
 Federal Manufactured
 Home Construction
 And Safety Standards

GAS LINE SIZE CHART	
	= 1"
	= 3/4"

2001 SQ.FT. (STD PLAN "CONDITIONED")		N/A SQ.FT. (W/OPT. PORCH/RECESS "CONDITIONED")	
CMH MANUFACTURING	Model #: NX128764A	Drawing #:	
Product Designer: BF	Date: 04/18	Scale: NTS	52M003
28' x 76' NXT			
GAS LINE DETAIL			



Model # 52M003 Minimum Joist Spacing 16 " Designed By: JDC
 Box Width = 158 " Double wide No Offset Box 8/6/18
 Box Length = 76 ft. 99.5" 12" MIN. IBEAM No Clerestory
 No Skylights No Origami Dormer
 No Porches No Sunken Floor
 Joist Size = #2 spf 2x6 Lags 9Mx3" No Parapet Roof

Model # 52M003-OPT Minimum Joist Spacing 16 " Designed By: JDC
 Box Width = 158 " Double wide No Offset Box 8/6/18
 Box Length = 76 ft. 99.5" 12" MIN. IBEAM No Clerestory
 No Skylights No Origami Dormer
 No Porches No Sunken Floor
 Joist Size = #2 spf 2x6 Lags 9Mx3" No Parapet Roof

Version R13.18

Version R13.18

Shearwall	Dist./ Hitch	Length	PLF	# of Joists	Lags	Notes
Wind Zone 1 Standard Roof (3/8" sheathing only with 15 gax 1.5" at 5"/10" oc. (197 plf) Chords: 2x4 SPF #3 Top Plate & 1x4 Rail. Each spliced w/ 12" glue block.) 96 inch sidewall						
A	0'	112"	324	2	3/2	
D	76'	112"	324	2	3/2	
Wind Zone 2 Standard Roof (3/8" sheathing only with 15 gax 1.5" at 5"/10" oc. (197 plf) Chords: 2x4 SPF #3 Top Plate & 1x4 Rail. Each spliced w/ 12" glue block.) 96 inch sidewall						
A	0'	112"	324	2	3/2	
B	36.63'	128"	515	2(+1)	5/2	
C	56.29'	128"	324	2	3/1	
D	76'	116"	162	2	2/1	
Wind Zone 3 Standard Roof (3/8" sheathing only with 15 gax 1.5" at 5"/10" oc. (197 plf) Chords: 2x4 SPF #3 Top Plate & 1x4 Rail. Each spliced w/ 12" glue block.) 96 inch sidewall						
A	0'	128"	324	2	3/2	
B	36.63'	128"	515	2(+1)	5/2	
C	56.29'	Full	324	2	2/2	
D	76'	140"	162	2	2/1	

Shearwall	Dist./ Hitch	Length	PLF	# of Joists	Lags	Notes
Wind Zone 1 Standard Roof (3/8" sheathing only with 15 gax 1.5" at 5"/10" oc. (197 plf) Chords: 2x4 SPF #3 Top Plate & 1x4 Rail. Each spliced w/ 12" glue block.) 96 inch sidewall						
Aopt	0'	117.5"	324	3	3/3	Split Shearwall 47.75/69.75
Dopt	76'	117.5"	324	3	3/3	Split Shearwall 47.5/70
Wind Zone 2 Standard Roof (3/8" sheathing only with 15 gax 1.5" at 5"/10" oc. (197 plf) Chords: 2x4 SPF #3 Top Plate & 1x4 Rail. Each spliced w/ 12" glue block.) 96 inch sidewall						
Aopt	0'	117.5"	324	3	3/3	Split Shearwall 47.75/69.75
B	36.63'	128"	515	2(+1)	5/2	
C	56.3'	128"	324	2	3/1	
Dopt	76.01'	117.5"	162	2	2/2	Split Shearwall 47.5/70
Wind Zone 3 Standard Roof (3/8" sheathing only with 15 gax 1.5" at 5"/10" oc. (197 plf) Chords: 2x4 SPF #3 Top Plate & 1x4 Rail. Each spliced w/ 12" glue block.) 96 inch sidewall						
#VALUE!	#VALUE!	#VALUE!	N/A	#VALUE!	#VALUE!	#VALUE! 47.75/69.75 #N/A
B	36.63'	128"	515	2(+1)	5/2	
C	56.3'	Full	324	2	2/2	
Dopt	76.01'	117.5"	324	3	3/3	Split Shearwall 47.5/70

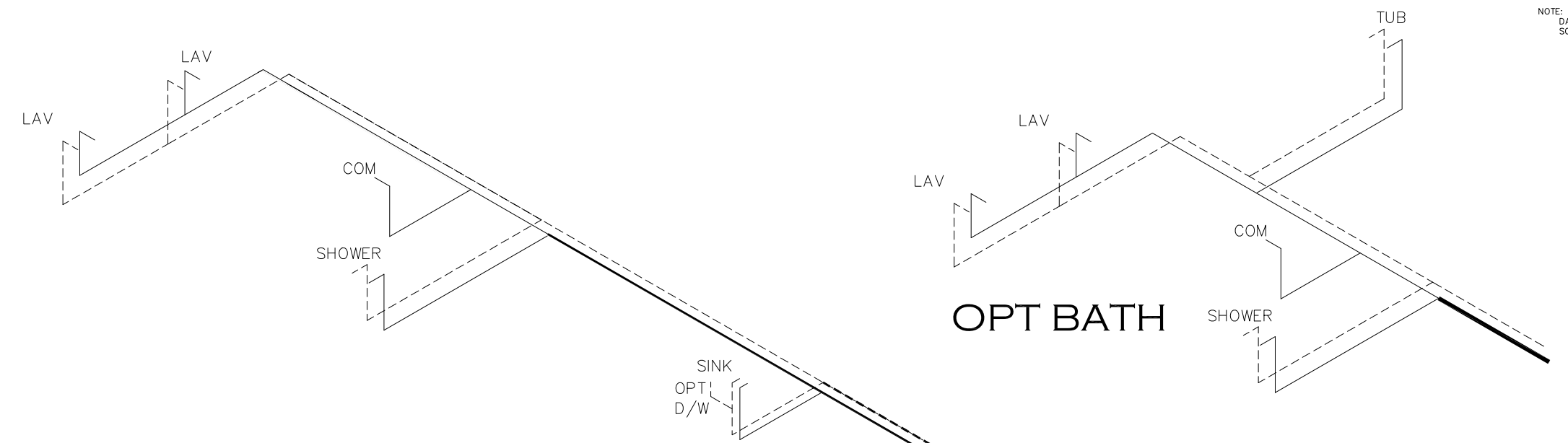
APPROVED

REVIS
 29 NOV 2022
 FP-28-5118
 Federal Manufactured
 Home Construction
 And Safety Standards

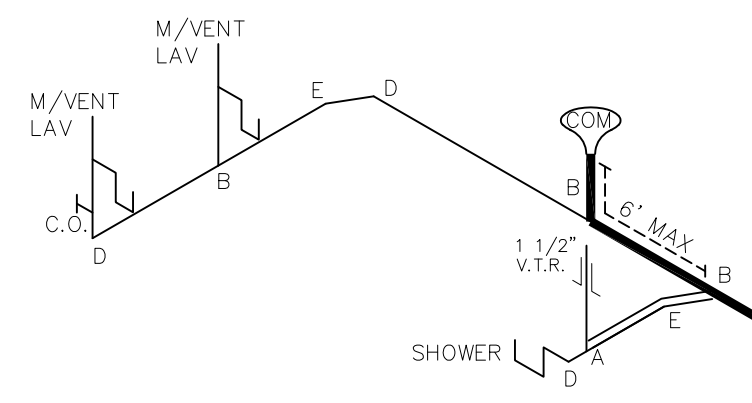
APPROVED

NOTE:
 DASHED LINES INDICATE HOT WATER
 SOLID LINES INDICATE COLD WATER

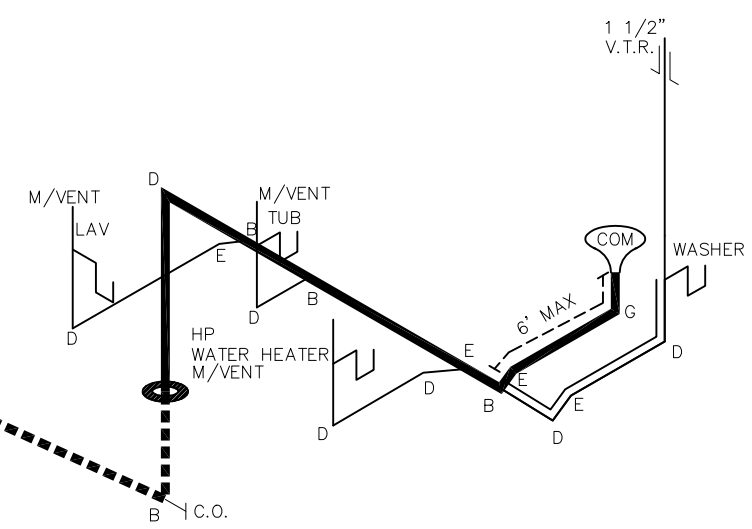
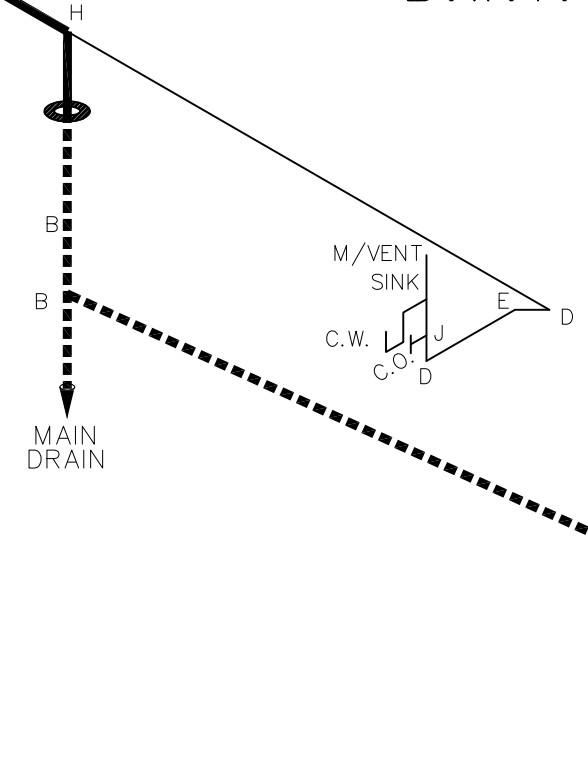
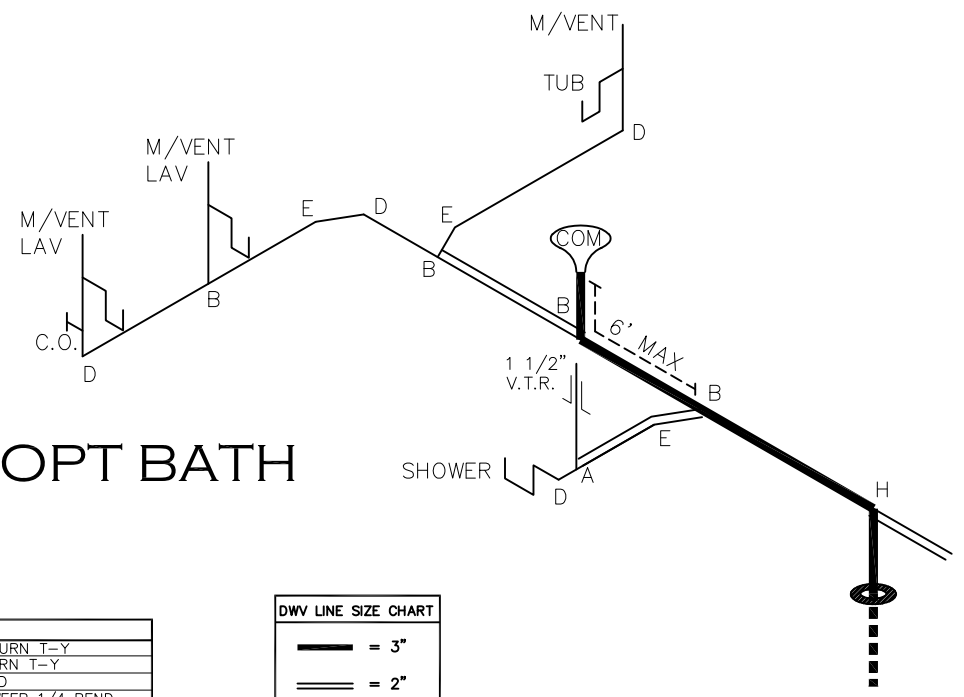
— = 3/4"
 — = 1/2"



SUPPLY LINES



D.W.V. LINES



OPT BATH

APPROVED **HWC** **APPROVED**
 REVISED
 16 MAY 2023
 FP-28-5118
 Federal Manufactured
 Home Construction
 And Safety Standards

LEGEND	
A	SHORT TURN T-Y
B	LONG TURN T-Y
C	1/4 BEND
D	LONG SWEEP 1/4 BEND
E	45 ELL
F	DBL. SANITARY TEE
G	4x3 CLOSET ELL
H	DOUBLE ELL
I	22 1/2" ELL
J	45° Y
K	LONG TURN STREET ELBOW
L	45 FTG ELL

D.W.V. LINE SIZE CHART	
—	= 3"
—	= 2"
—	= 1 1/2"

2001 SQ.FT. (STD PLAN "CONDITIONED")		N/A SQ.FT. (W/OPT. PORCH/RECESS "CONDITIONED")	
CMH MANUFACTURING	Model #: NX128764A	Drawing #:	
Product Designer: BF	Date: 04/18	Scale: NTS	52M003
D.W.V. and Supply Lines		28' x 76' NXT	