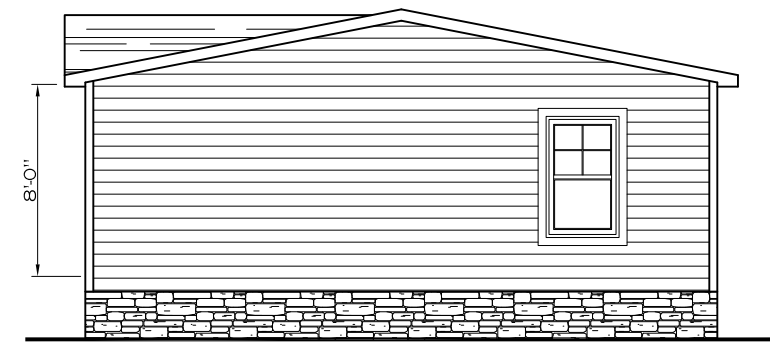
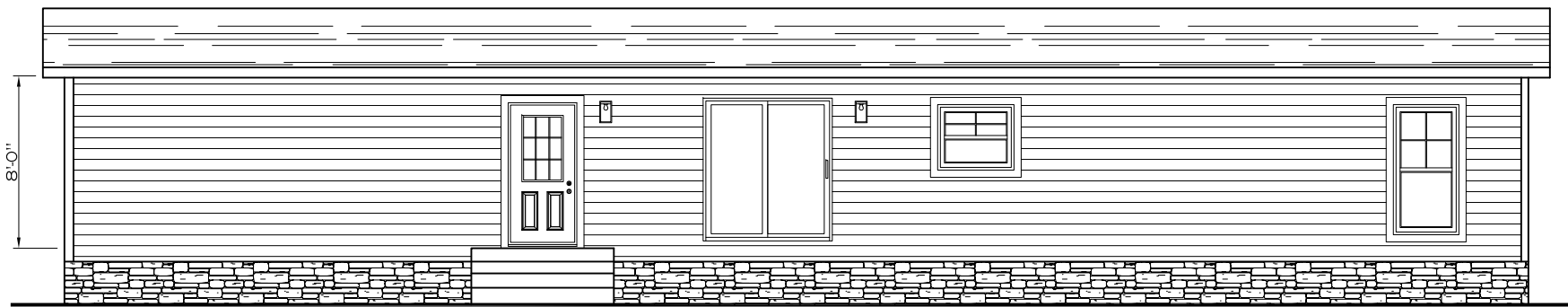
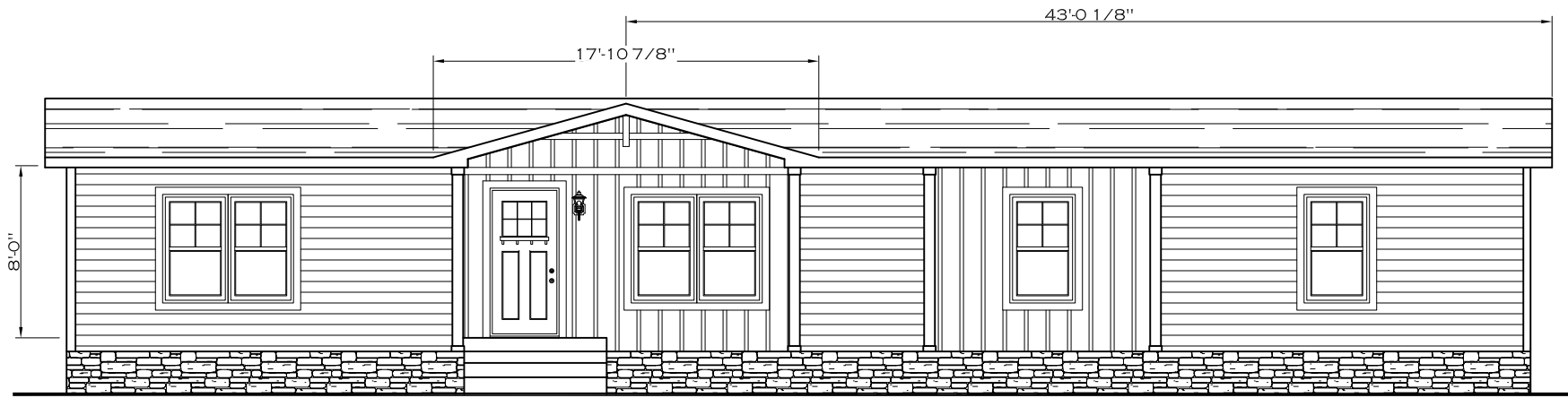


MODEL #NXT28684A
 DRAWING # 52M032
28' x 68' EVERETT

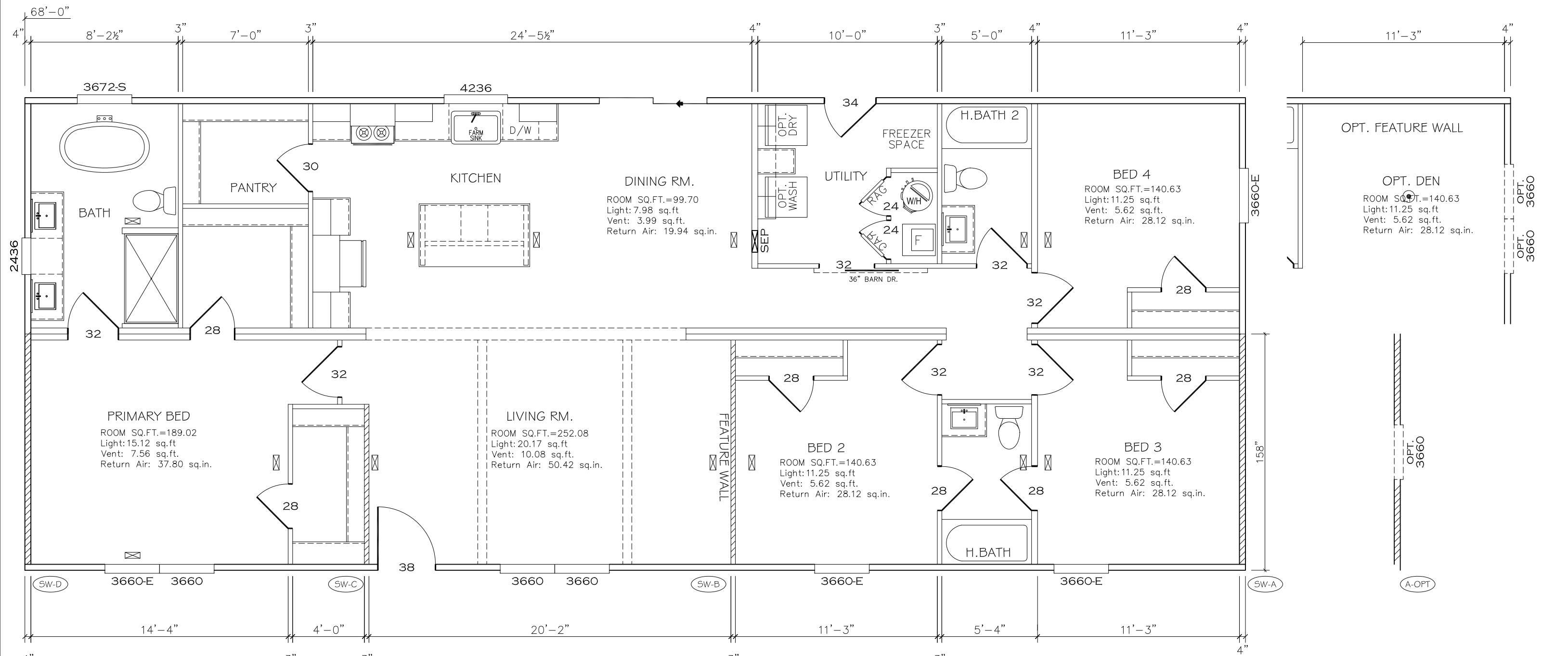


REV:-11/27/2023 9:04 PM

1790 SQ.FT. (STD PLAN "CONDITIONED")
 N/A SQ.FT. (W/OPT. PORCH/RECESS "CONDITIONED")

CMH MANUFACTURING	Model #: NXT28604A	Drawing #:
	Date: 10.26.23 Scale: N.T.S.	52M032
Product Designer: FrenchB	28' x 68' Everett	

ELEVATION



Model # 52M032 Minimum Joist Spacing 16"

Box Width = 158" Double wide No Offset Box

Box Length = 68 ft. 99.5" 10" MIN.IBEAM No Clerestory

No Skylights No Origami Dormer

No Porches No Sunken Floor

Joist Size = #2 spf 2x6 Lags 9Mx3" No Parapet Roof

Model # 52M032 opt Minimum Joist Spacing 16"

Box Width = 158" Double wide No Offset Box

Box Length = 68 ft. 99.5" 10" MIN.IBEAM No Clerestory

No Skylights No Origami Dormer

No Porches No Sunken Floor

Joist Size = #2 spf 2x6 Lags 9Mx3" No Parapet Roof

Version R13.17

Wind Zone	Standard Roof	(197 plf) Chords: 2x4 SPF #3 Top Plate spliced w/ 12" glue block & 1x6 SPF Rail spliced w/ 2x4 MCP.	96 inch sidewall			
Shearwall	Dist./ Hitch	Length	PLF	# of Joists	Lags	Notes
A	0'	Full	162	2	1/1	
D	68'	Full	162	2	1/1	

Wind Zone	Standard Roof	(197 plf) Chords: 2x4 SPF #3 Top Plate spliced w/ 2x4 MCP & 1x6 SPF Rail spliced w/ 12" glue block.	96 inch sidewall			
Shearwall	Dist./ Hitch	Length	PLF	# of Joists	Lags	Notes
A	0'	Full	425	2	3/3	
B	28.54'	128"	515	2(+1)	5/2	
D	68'	Full	425	2	3/3	

Wind Zone	Standard Roof	(197 plf) Chords: 2x4 SPF #3 Top Plate spliced w/ 2x4 MCP & 1x6 SPF Rail spliced w/ 12" glue block.	96 inch sidewall			
Shearwall	Dist./ Hitch	Length	PLF	# of Joists	Lags	Notes
A	0'	Full	425	2	3/3	
B	28.54'	Full	425	2	1/1	
C	48.96'	107"	425	4	3/1	0.93
D	68'	136"	162	2	2/1	

Version R13.17

Wind Zone	Standard Roof	(197 plf) Chords: 2x4 SPF #3 Top Plate spliced w/ 12" glue block & 1x6 SPF Rail spliced w/ 2x4 MCP.	96 inch sidewall			
Shearwall	Dist./ Hitch	Length	PLF	# of Joists	Lags	Notes
Aopt	0'	117.5"	425	4	4/4	Split Shearwall 60.75/56.75
D	68'	Full	162	2	1/1	

Wind Zone	Standard Roof	(197 plf) Chords: 2x4 SPF #3 Top Plate spliced w/ 2x4 MCP & 1x6 SPF Rail spliced w/ 12" glue block.	96 inch sidewall			
Shearwall	Dist./ Hitch	Length	PLF	# of Joists	Lags	Notes
Aopt	0'	117.5"	425	4	4/4	Split Shearwall 60.75/56.75
B	28.54'	128"	515	2(+1)	5/2	
D	68'	Full	425	2	3/3	

Wind Zone	Standard Roof	(197 plf) Chords: 2x4 SPF #3 Top Plate spliced w/ 2x4 MCP & 1x6 SPF Rail spliced w/ 12" glue block.	96 inch sidewall			
Shearwall	Dist./ Hitch	Length	PLF	# of Joists	Lags	Notes
Aopt	0'	117.5"	425	4	4/4	Split Shearwall 60.75/56.75
B	28.54'	Full	425	2	1/1	
C	48.96'	107"	425	4	3/1	0.93
D	68'	136"	162	2	2/1	

APPROVED

HWG

APPROVED

NOV 30 2023

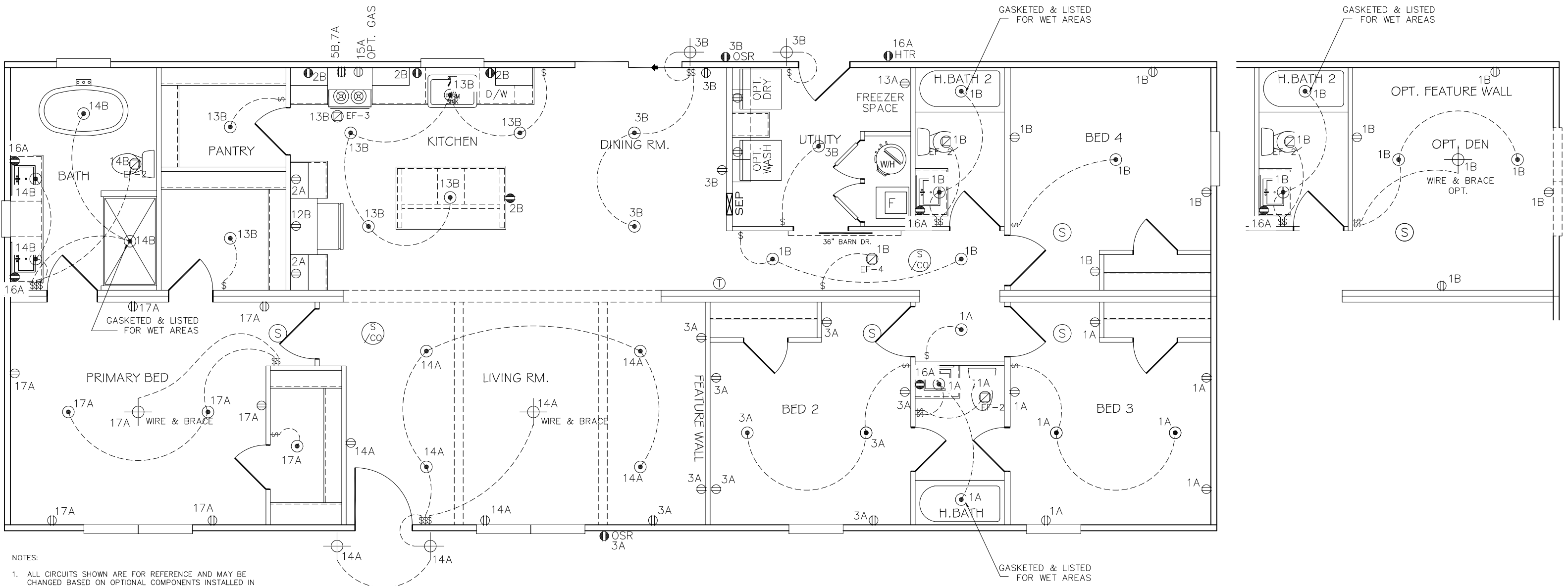
Federal Manufactured Home Construction And Safety Standards

1790 SQ.FT. (STD PLAN "CONDITIONED")
N/A SQ.FT. (W/OPT. PORCH/RECESS "CONDITIONED")

CMH MANUFACTURING	Model #: NHT1 G6B4A	Drawing #:
	Date: 10.26.23	Scale: N.T.S.
Product Designer: FrenchB	28' X 68' Everett	

Floor Plan

CIRCUIT	CIRCUIT #	WIRE	BREAKER	CIRCUIT	CIRCUIT #	WIRE	BREAKER	CIRCUIT	CIRCUIT #	WIRE	BREAKER
LIGHT/RECEP	1A,1B,3A,3B	14-2	15-SP	DRYER	5A,7B	SEE NOTE #8		BATHROOM	16A	12-2	20-SP
LIGHT/RECEP	13B,14A,14B,17A	14-2	15-SP	WATER HEATER	4A,6B	SEE NOTE #8		OPT G/DISP	9B	SEE NOTE #8	
KITCHEN	2A,2B	12-2	20-SP	RANGE	5B,7A	SEE NOTE #8		OPT SPA/ WP/JAC	11A,B	SEE NOTE #8	
WASHER	12A	12-2	20-SP	FURNACE	6A,8A,B,10A,B	SEE NOTE #8		FREEZER	13A	SEE NOTE #8	
RANG HOOD/ MICROWAVE	15B	SEE NOTE #8		OPT D/WASH	9A	SEE NOTE #8		OPT ELEC. FIREPLACE	16B	SEE NOTE #8	
OPT. GAS RANG	15A	SEE NOTE #8		SMOKE/CO DECT	4B	SEE NOTE #8					
				REFER	12B	SEE NOTE #8					



- NOTES:
- ALL CIRCUITS SHOWN ARE FOR REFERENCE AND MAY BE CHANGED BASED ON OPTIONAL COMPONENTS INSTALLED IN THE HOME.
 - REFER TO DAPIA MANUAL FOR SYMBOL CHART.
 - EITHER LIGHT OR RECEPTACLE MUST CONNECT TO SWITCH.
 - EF-1= 50 CFM EXHAUST FAN REQUIRED FOR THERMAL ZONE III THERMAL ZONES I & II MAY USE FAN OR WINDOW W/1.5 SQ. FT. OPENABLE GLASS.
 - EF-2= 50 CFM EXHAUST FAN REQUIRED THERMAL ZONE I, II, AND III.
 - EF-3= 100 CFM RANGE EXHAUST FAN, SWITCH AT HOOD.
 - EF-4= WHOLE HOUSE VENTILATION REQUIREMENTS PER DAPIA MANUAL.
 - REFER TO DAPIA MANUAL OR THE MFG. INSTALLATION INSTRUCTIONS FOR PROPER WIRE SIZE AND BREAKER SIZE FOR SPECIFIC APPLIANCE AND MODEL BEING INSTALLED.
 - ALL SMOKE ALARMS TO BE LOCATED ON THE CEILING.
 - CARBON MONOXIDE ALARMS ARE ONLY REQUIRED WHEN HOME HAS EITHER FUEL BURNING APPLIANCES, IS GARAGE READY OR IS BASEMENT READY. REFERENCE DAPIA MANUAL FOR ADDITIONAL INFORMATION.
 - DIMENSIONS SHOWN ON PRINT ARE APPROXIMATE AND TO BE USED ONLY AS A GUIDELINE.

APPROVED

HWC

DEC 07 2023
REVISED

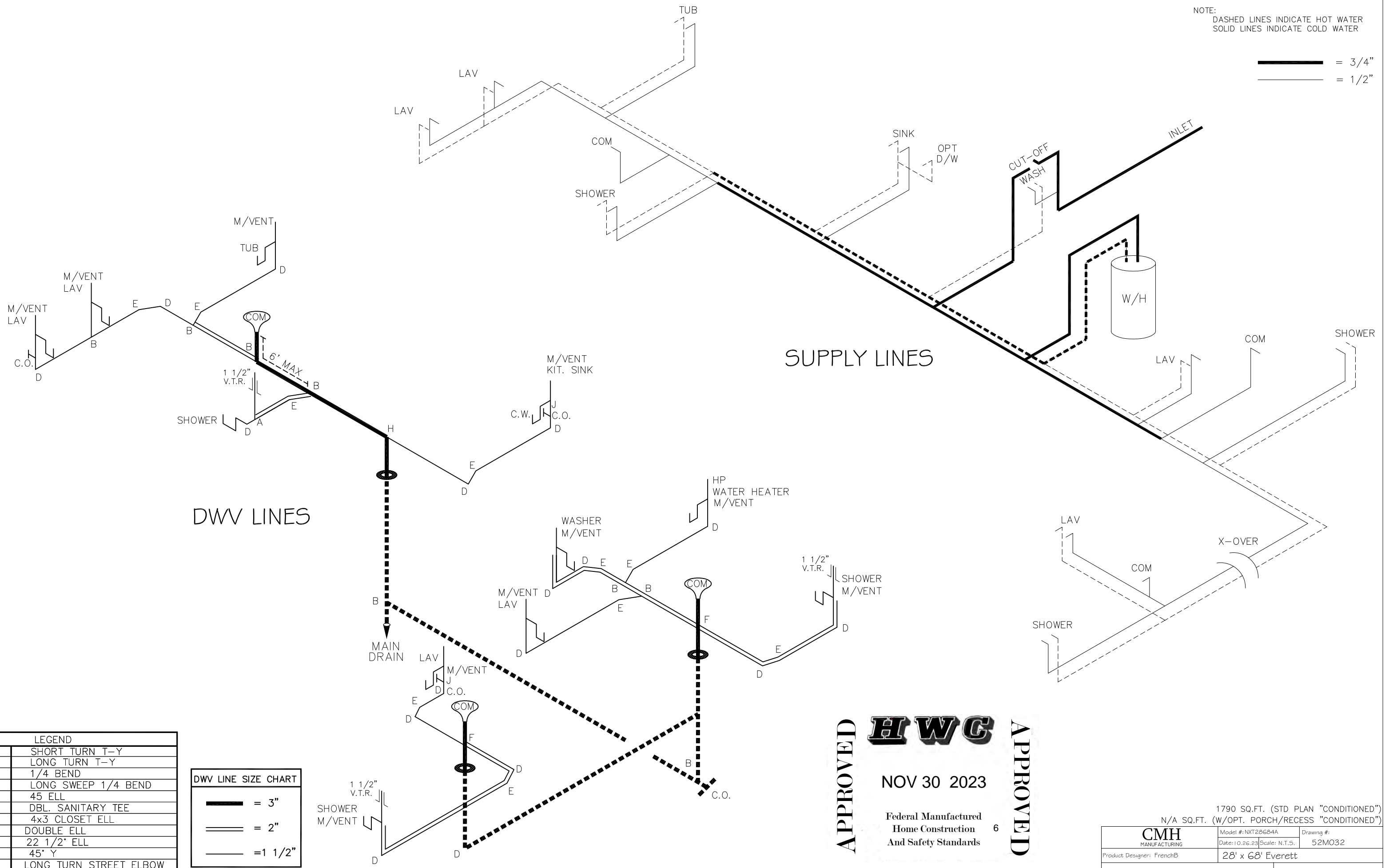
Federal Manufactured
Home Construction
And Safety Standards

APPROVED

1790 SQ.FT. (STD PLAN "CONDITIONED")	
N/A SQ.FT. (W/OPT. PORCH/RECESS "CONDITIONED")	
CMH MANUFACTURING	Model #: NXT28604A Date: 10.26.23 Scale: N.T.S.
Product Designer: FrenchB	Drawing #: 52M032
ELECTRICAL PLAN	

NOTE:
DASHED LINES INDICATE HOT WATER
SOLID LINES INDICATE COLD WATER

———— = 3/4"
———— = 1/2"



DWV LINES

SUPPLY LINES

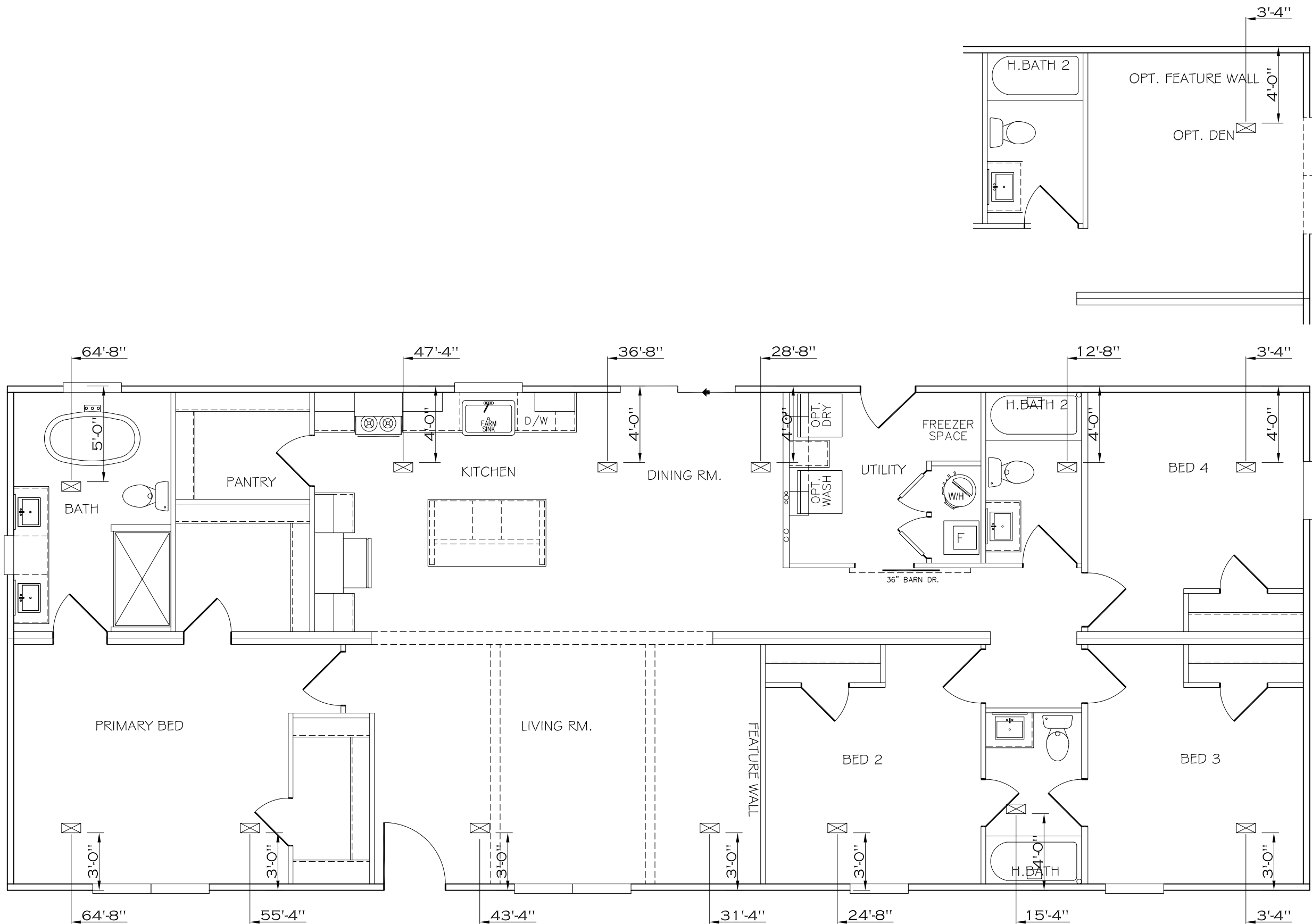
LEGEND	
A	SHORT TURN T-Y
B	LONG TURN T-Y
C	1/4 BEND
D	LONG SWEEP 1/4 BEND
E	45 ELL
F	DBL. SANITARY TEE
G	4x3 CLOSET ELL
H	DOUBLE ELL
I	22 1/2° ELL
J	45° Y
K	LONG TURN STREET ELBOW
L	45 FTG ELL

DWV LINE SIZE CHART	
————	= 3"
=====	= 2"
—————	= 1 1/2"

APPROVED

APPROVED
 NOV 30 2023
 Federal Manufactured
 Home Construction
 And Safety Standards

1790 SQ.FT. (STD PLAN "CONDITIONED")	
N/A SQ.FT. (W/OPT. PORCH/RECESS "CONDITIONED")	
CMH MANUFACTURING	Model #: NKT28684A
Date: 10.26.23	Scale: N.T.S.
Product Designer: FrenchB	28' x 68' Everett
Drawing #: 52MO32	
D.W.V. and Supply Lines	



REV:-1 1/27/2023 9:05 PM

1790 SQ.FT. (STD PLAN "CONDITIONED")	
N/A SQ.FT. (W/OPT. PORCH/RECESS "CONDITIONED")	
CMH MANUFACTURING	Model #: NXT28604A Date: 10.26.23 Scale: N.T.S.
Product Designer: FrenchB	Drawing #: 52M032
OVERHEAD DUCT	

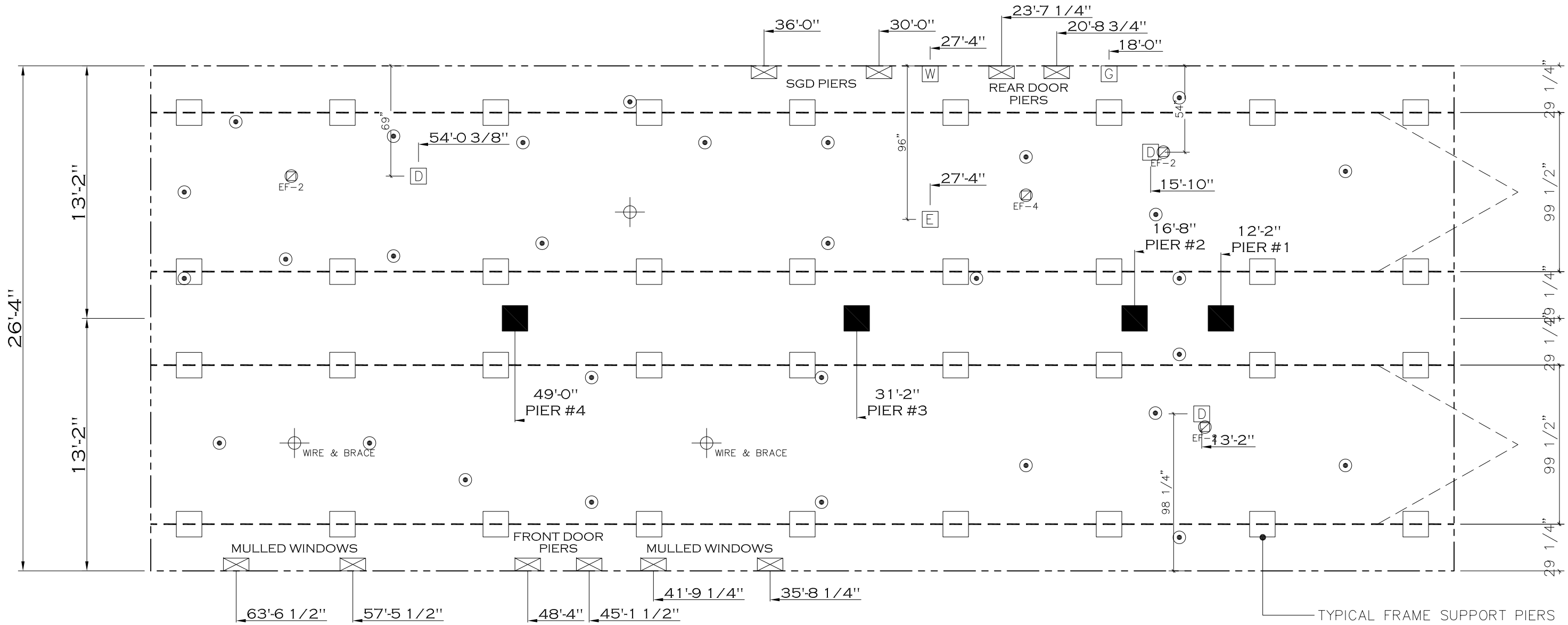
20 lb ROOF LOAD SIDEWALL OPENING PIER LOAD 28' BOX WIDTH	SIDEWALL OPENING (FT) REQUIRED PIER LOAD (LBS)					
	3	4	5	6	8	10
	1175	1330	1485	1640	1950	2260

20 psf Roof Live Load		
Column Pier #	Distance from Hitch	Pier Load (lbs)
1	12.167	1289
2	16.667	1289
3	31.167	3922
4	49	3922

30 psf Roof Live Load		
Column Pier #	Distance from Hitch	Pier Load (lbs)
1	12.167	2638
2	16.667	2638
3	31.167	6149
4	49	6149

40 psf Roof Live Load		
Column Pier #	Distance from Hitch	Pier Load (lbs)
1	12.167	3198
2	16.667	3198
3	31.167	7587
4	49	7587

*FOR 30 lb & 40 lb ROOF LOAD REFER TO TABLES 7b & 7c IN THE INSTALLATION MANUAL.



- GENERAL NOTES:
- PIER LOADS SHOWN ARE TO BE USED TO SIZE THE FOOTINGS BELOW THE MARRIAGEWALL FOR COLUMN SUPPORT PIERS. REFER TO TABLES 6b AND 6c IN THE INSTALLATION MANUAL FOR LOAD ON FRAME PIER FOOTINGS FOR HOMES THAT DO NOT REQUIRE PERIMETER BLOCKING. REFER TO TABLES 7b AND 7c IN THE INSTALLATION MANUAL FOR LOAD ON FRAME PIER FOOTINGS THAT REQUIRE PERIMETER BLOCKING. REFER TO TABLES 10 AND 10a TO DETERMINE FOOTING SIZE FOR ALL PIERS.
 - REFER TO TABLE 9 FOR PIER CONFIGURATION AND MAXIMUM ALLOWABLE HEIGHTS. CROSS REFERENCE THE PIER HEIGHT WITH THE MAXIMUM ALLOWABLE FLOOR HEIGHT LISTED IN THE FRAME TIEDOWN CHARTS (TABLE 18, 19, AND 20).
 - FLOOR WIDTH SHOWN IS FOR STANDARD PRODUCT ONLY. CONTACT THE MFG PLANT FOR SPECIFICATIONS OF OPTIONS ORDERED.
 - SERVICE DROP LOCATIONS IDENTIFIED ARE APPROXIMATE.
 - THE MAXIMUM SPACING FOR FRAME SUPPORT PIERS FOR 8" I-BEAMS IS 8 FEET, 10" & 12" I-BEAMS ARE 10 FEET.

SERVICE DROP LEGEND	
[E]	= ELECTRICAL DROP
[W]	= WATER INLET
[D]	= DWV PLUMBING DROP
[G]	= GAS INLET

PIER LEGEND	
[□]	= SUPPORT UNDER MATING OPENING
[■]	= SUPPORT AT MATING COLUMN
[▨]	= SUPPORT UNDER MATING WALL
[■]	= PIER PORCH/RECESSED ENTRY
[□]	= PIER MAIN BEAM
[▨]	= PIER PERIMETER
●	= TIE-DOWN SUPPORT (QTY PER TBL M, SEE DETAIL D-6 IN FOUND. PKG.)

REV:-11/15/2023 3:01 PM

1790 SQ.FT. (STD PLAN "CONDITIONED")
N/A SQ.FT. (W/OPT. PORCH/RECESS "CONDITIONED")

CMH MANUFACTURING	Model #: NXT28604A	Drawing #:
Product Designer: FrenchB	Date: 10.26.23	Scale: N.T.S.
28' x 68' Everett		52M032

SERVICE